



# NETBOTZ 420/320 SERIES APPLIANCE

WALL-MOUNT UNIT



RACK-MOUNT UNIT

## HIGHLIGHTS

- Actively monitors unsupervised, business-critical locations and the systems working there, to provide continuous business availability
- Provides advance warning of equipment failure
- Protects a room and its valuable contents, like IT equipment, from damage due to water leaks, high or low temperatures, smoke or dust, humidity, vandalism, theft, and many more dangerous environmental and physical factors
- Reduces downtime and associated costs
- Ideal for small to medium sized spaces such as wiring closets and rooms that require physical threat monitoring and protection
- Most comprehensive IP-based physical threat monitoring solution
- Provides outstanding price/performance
- From the leader in IP-based physical security solutions



Reliable access to information is critical in today's on-demand business climate. The requirements on IT professionals are ever increasing - greater network speed, greater reliability, and 100% uptime ... all while resources are shrinking and responsibilities are growing.

Monitoring and protecting critical assets and spaces from the environment and physical factors that can threaten continuous business availability is a key concern. NetBotz designed two new products that protect against all kinds of threatening conditions - human error, intrusion, extreme heat, low humidity, water leakage - that could jeopardize the processes, operations, and transactions that form the backbone of business.

NetBotz appliances provide early warning about potential problems, allowing for quicker recovery when things do go wrong, while saving money and improving productivity. Like remote eyes and ears, NetBotz monitors your distributed assets 24/7.

## CONTINUOUS BUSINESS AVAILABILITY IS THE FIRST PRIORITY

**NetBotz 320** is the ideal active monitoring solution for small spaces, such as wiring closets, that require comprehensive physical threat monitoring with limited need for future expansion.

- Completely self-contained and web accessible
- Integrated temperature, humidity, dew point, and air flow sensors that monitor the environment
- Integrated audio sensors detect audio alerts from devices such as smoke alarms, intrusion detection devices, and more
- Door switch sensor notifies when the room or server cabinet is accessed
- Advanced Device Crawlers and IPMI monitoring of physical “vital signs” or servers and network equipment\*
- Digital “watermarking” of video clips\*
- Camera block-out to prevent viewing of portion of camera image\*
- Import map/image into Advanced View for graphical image of deployment, including icons representing pods/sensors/appliances that turn color with sensor thresholds\*
- Four external sensor ports accommodate particle, fluid, amperage, dry contact, and other sensors
- Sends alerts using e-mail and SNMP traps when any monitored condition goes outside of a user-specified range
- Posts alerts and sensor data to web servers using built-in HTTP post support, as well as forwarding to other systems using FTP data delivery
- Built-in camera enables you to easily view the condition of equipment via web-based interface. Automatically captures images of the room whenever a door to the room is opened, or optionally when motion is detected
- Camera resolution up to 640 x 480, 24 bit-color
- NetBotz appliances are manageable objects that can be used with your existing SNMP-based network management system
- Sturdy swivel bracket that enables 360° positioning
- SSL-encrypted interactive and alert communications
- On-board storage of alerts for up to 12 hours
- Rack- and wall-mount form factors
- Camera Motion Sensor software included
- Basic Device Crawlers software included
- Support 3rd party Power Over Ethernet solutions (power from switch port or wall power “injector” solutions)

**NetBotz 420** is a fully featured monitoring solution ideal for small to medium sized spaces like wiring closets, server rooms, or other spaces that require comprehensive monitoring. The NetBotz 420 has the ability to expand to nearby locations via additional Camera Pods, Sensor Pods, Output Relay Pods, Power Control Pods, 4-20mA Pods, intelligent power strips, and alternative network connections.

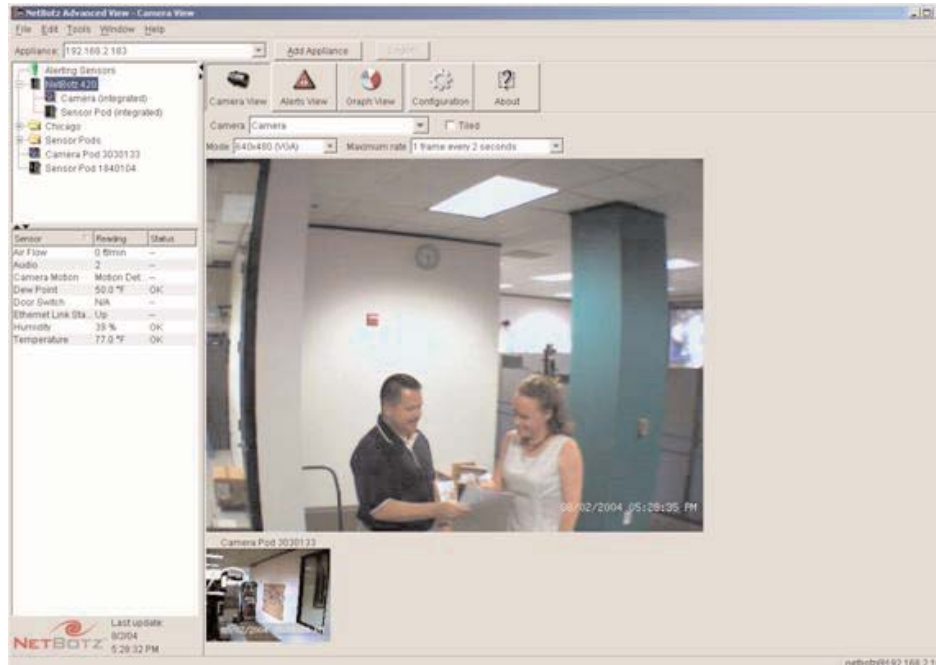
**In addition to all the features of the 320, the 420 provides:**

- USB 1.1 port supports the addition of one Camera Pod or CCTV Adapter Pod and up to four non-camera pods (Sensor Pod, Output Relay Pod, Power Control Pod, 4-20mA Pod)
- Optional network connections: 802.11b wireless LAN, GSM/SMS wireless modem, PPP dial modem
- Output power control with industry-leading intelligent power strip manufacturers, enabling the NetBotz solution to provide power on/off for each port on a power strip and provide a hard shut down of individual ports\*

*\* Note: These capabilities are enabled by Premium Software Modules, available with the purchase of an Extended Warranty.*

## WEB-BASED INTERFACE PUTS YOUR EQUIPMENT AT YOUR FINGERTIPS

With NetBotz appliances, all you need to monitor your computer or network equipment and the surrounding environment is an electrical outlet and either a standard Ethernet LAN connection or a supported external modem connected to a phone line. Configuring the NetBotz appliance is easy. Just connect your appliances to your network, assign IP addresses for the appliances, and then set thresholds for the environment conditions you want to monitor (such as temperature, humidity, air flow, or an external sensor). When exceeded, an e-mail or SNMP trap alert will automatically be generated. Color camera images are continuously captured and updated in the NetBotz Advanced View, and captured images are included in alert notifications as well. These features ensure that your NetBotz appliances can be monitored and managed from across the room or around the world.



NetBotz Advanced View

## CREATE A PHYSICAL SECURITY NETWORK WITH NETBOTZ CENTRAL

Use NetBotz Central to expand the power of your NetBotz appliances. A key component of the NetBotz monitoring solution, NetBotz Central gives you a 24/7 view into the status of your environment - whether on the production floor, in a remote server room, in a medical supplies storage area, or anywhere there are assets to protect. By providing a centralized way to mass configure, view and analyze data collected by NetBotz monitoring appliances, NetBotz Central creates a physical security network that spans the organization across offices, regions, borders and boundaries.

## EXTERNAL SENSOR SUPPORT

External sensor ports enable you to extend and enhance the functionality of your NetBotz appliance. You can use the external sensor ports to add NetBotz sensors such as NetBotz Amp Detector amperage monitoring devices, External Temperature Sensors, External Humidity Sensors, 0-5V Sensor Cables, and External Fluid Detector (available separately). And 4-20mA Sensor Pods, support for 0-5V analog sensors, and the NetBotz Dry Contact Cable enable you to use a tremendous variety of third party sensors with your NetBotz appliance, enabling you to detect condensation, glass break, vibration and more.

## SPECIFICATIONS

	420	320
<b>Housing</b>	Wall Mount: 12.45cmW x 19.55cmH x 2.27cmD, 20 gauge metal	Wall Mount: 12.45cmW x 19.55cmH x 2.27cmD, 20 gauge metal
	Rack Mount: 19" rack mount, 1U, 20 gauge metal	Rack Mount: 19" rack mount, 1U, 20 gauge metal
<b>Indicators</b>	Appliance operational/alert status, network speed, network activity, temperature out-of-limit, camera activity, humidity out-of-limit, airflow out-of-limit, sound detected, external sensor violation detected LEDs	Appliance operational/alert status, network speed, network activity, temperature out-of-limit, camera activity, humidity out-of-limit, airflow out-of-limit, sound detected, external sensor violation detected LEDs
<b>Additional Camera Pods</b>	Supports up to 1 additional camera pod (Camera Pod 120 or CCTV Adapter Pod 120)	N/A
<b>Additional Sensor Pod</b>	Supports up to 4 additional pods (any combination of of Sensor Pod 120s, Output Relay Pod 120s, or Power Control Pods)	N/A
<b>Protocols</b>	TCP/IP, HTTP, SMTP, SNMP, DHCP, DNS, Socks V4 or V5 Proxy server	TCP/IP, HTTP, SMTP, SNMP, DHCP, DNS, Socks V4 or V5 Proxy server
<b>Network Interfaces</b>	Ethernet 10/100 Mbps standard, optional 802.11b, GSM/SMS, PPP modem	Ethernet 10/100 Mbps standard
<b>Management Interface</b>	Internet Explorer v 5.5 or later; Netscape Navigator v 4.79, 6.0 or later; Mozilla 1.3 or later	Internet Explorer v 5.5 or later; Netscape Navigator v 4.79, 6.0 or later; Mozilla 1.3 or later
<b>Client System Requirements</b>	Microsoft Windows, (2000 or XP SP1), Red Hat EL 3, Fedora Core 3, or Debian GNU 3. Use of Advanced View interface requires a one-time download of the Java Runtime Environment Plug-in from Sun Microsystems.	Microsoft Windows, (2000 or XP SP1), Red Hat EL 3, Fedora Core 3, or Debian GNU 3. Use of Advanced View interface requires a one-time download of the Java Runtime Environment Plug-in from Sun Microsystems.
<b>Operational Environment</b>	Temperature: 2° to 50° C (35° F to 120° F); Relative Humidity: 10% to 90% (noncondensing); For indoor use only, not designed for use in corrosive or caustic environments	Temperature: 2° to 50° C (35° F to 120° F); Relative Humidity: 10% to 90% (noncondensing); For indoor use only, not designed for use in corrosive or caustic environments
<b>Screen Resolution</b>	1024 x 768 recommended	1024 x 768 recommended
<b>Regulatory Certification</b>	FCC Class A, CE, VCCI on system, UL on power supply	FCC Class A, CE, VCCI on system, UL on power supply

Product SKUs	
NetBotz 420 wall-mount appliance	NBWL0420
NetBotz 420 rack-mount appliance	NBRK0420
NetBotz 420E camera-less rack-mount appliance	NBRK0420E
NetBotz 320 wall-mount appliance	NBWL0320
NetBotz 320 rack-mount appliance	NBRK0320
NetBotz 320E camera-less rack model	NBRK0320E

NetBotz 420/320 Extended Warranty SKUs	
First Year Bridge Software Warranty: Single-Appliance Pak	NBSP0131
First Year Bridge Software Warranty: 5-Appliance Pak	NBSP0132
First Year Bridge Software Warranty: 20-Appliance Pak	NBSP0133
Full Year Extended Warranty Renewal: Single-Appliance Pak	NBSP0141
Full Year Extended Warranty Renewal: 5-Appliance Pak	NBSP0142
Full Year Extended Warranty Renewal: 20-Appliance Pak	NBSP0143
Three Year Extended Warranty: Single Appliance Pak	NBSP3141
Three Year Extended Warranty: 5-Appliance Pak	NBSP3142
Three Year Extended Warranty: 20-Appliance Pak	NBSP3143

07/01/2005



### ABOUT NETBOTZ

*NetBotz, Inc. is the leading global provider of IP-based intelligent physical security solutions. Thousands of organizations use the NetBotz solution, which prevents business and financial losses attributed to network downtime by providing early warning of conditions that threaten the integrity of a company's data, technical and equipment assets. NetBotz has received the Best in Show Award in the Network Management Category at NetWorld+Interop.*

WWW.NETBOTZ.COM

1.877.908.BOTZ(2689) 11044 RESEARCH BLVD., BLDG. C200 AUSTIN, TX 78759

BotzWare, NetBotz, and the NetBotz symbol are registered trademarks of NetBotz, Inc. All other company and product names mentioned are used only for identification purposes and may be trademarks or registered trademarks of their respective companies. © 2005 NetBotz Corporation. All rights reserved.