



FriendlyNET® GX5-2400W

24-Port Smart Gigabit Ethernet Switch



Now with 4 SFP Slots!



Gigabit is easy with the powerful FriendlyNET GX5-2400W. Just plug in the network connections (10, 100 or 1000 Mbps) and you'll be up and running within minutes. The GX5-2400W switch automatically negotiates the best speed, duplex (full or half) and wiring (Auto-Uplink™) for optimal performance.

48 Gbps Non-Blocking Gigabit Backbone

Built around a very sophisticated single-chip architecture, the GX5-2400W delivers non-blocking, wire-speed Gigabit performance on all ports.

As your network's average file sizes increase to hundreds of megabytes (MB), you'll appreciate how easily you can add newer Gigabit-equipped workstations, servers and backbone uplinks. Use the GX5-2400W switch on the edge of your network or to cluster small workgroups at Gigabit speeds. By investing in Gigabit today, you'll gain greater throughput and minimize network latency—over your existing Category 5 UTP cables.

4 SFP Slots for Optical Fiber Connectivity

The GX5-2400W gives you flexible choices of either copper cable or fiber optical cable on ports 21 to 24. Using SFP MiniGBIC modules you can connect the network to a fiber optical network backbone, or extend the transmission distance with the use of single-mode or multi-mode Gigabit fiber cables.

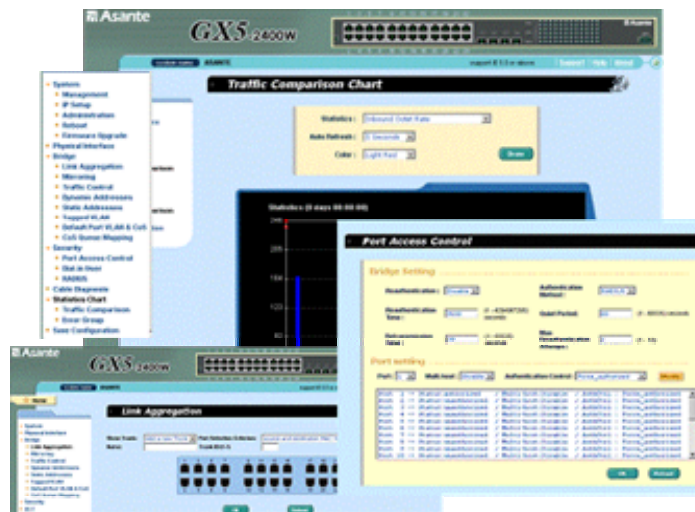
The Smart Choice

Tap into the GX5-2400W's on-board web configuration to enable high-end services, like trunking, mirroring, virtual LANs (VLANs) and quality of service (QoS).

Highlights	GX5-2400W	Other Gigabit Switches
Gigabit Ports	24	24
Plug-and-Play Operation	Yes	Yes
Configure via Web Browser	Yes	Maybe (some use command line interface)
Non-Blocking Design	Yes	Varies
Port Mirroring	Yes	No
Virtual LANs	Yes	No
Quality of Service	Yes	No
802.1X Radius	Yes	No
Trunking	Yes	No
SFP Garages	4	None to 2

Advanced Features

As Asante's most potent FriendlyNET workgroup switch, the GX5-2400W is powerful enough to handle the needs of a growing organization.



Supports Mac OS X
Rendezvous and iChat
v10.6

- **Configure with Web Browser.** All features are accessible from an easy-to-use interface. No cryptic command line commands or third-party network management applications required
- **Mirroring.** With a network analyzer (sold separately), monitor traffic on any port. Ideal for troubleshooting
- **Virtual LANs (VLANs).** Improve overall network performance, manageability and security by organizing computers and peripherals into logical workgroups. Data is delivered only to the intended recipients, while broadcast frames are sent only to members of the VLAN (limiting broadcast domain)
- **Quality of Service (QoS).** Efficiently control network resources by classifying traffic and prioritizing flows
- **802.1x Radius.** Protection to secure your network from unauthorized access.

SPECIFICATIONS

Ports

Gigabit Ethernet: 24 x 10/100/1000BaseT Gigabit Ethernet ports with Auto-Uplink: RJ-45 shielded connectors

Configuration: IEEE Auto Negotiation (sets 10/100/1000 Mbps speed and half/full duplex) or manual configuration via web management

SFP slots 4 slots for 1000SX or 1000LX transceiver. Auto-disable 1000BaseT port if link with fiber is detected.



Status Indicators

Power: Operating status of the unit

Per Port: 3 LEDs for port link/activity, data speed of port, and full/half duplex setting

Performance

Efficiency: Wire-speed, Gigabit Ethernet switching at 1,488,100 packets/second

Switch Architecture: Single-chip design with on-board frame buffers

Flow Control: Selectable IEEE 802.3x flow control (full duplex) and back pressure (half-duplex)

Link Aggregation: Trunk multiple ports for greater bandwidth (web configurable)

Forwarding MAC Table: 4K addresses with automatic learning and aging

On-Chip Buffer: 2 MBytes

Web Management

System Requirements: Internet Explorer 5, Netscape 6, Apple Safari 1 and later. Windows 98/Me/2000/NT/XP and Mac OS X. Screen resolution 1024 x 768 or higher recommended

Port Settings: Speed (disable, auto, 10 or 100 Mbps, full or half-duplex, 1000 Mbps full-duplex), flow control, QoS (lowest, low, normal or high)

802.1x and Radius Support: Provide network security with 802.1x address authentication

802.1Q Tag-based VLAN: Up to 256 VLANs.

Trunk: Aggregate 1000BaseT ports into 1 trunk (Up to 8 ports to aggregate up to 8000 Mbps bandwidth, full duplex)

Mirror: Monitor either ingress or egress traffic of specified ports.

Flexible Address Learning: Enable to define static MAC addresses table in addition to dynamic learning

Broadcast Storm Control: Set the threshold of broadcast and/or multicast traffic

Static Chart: Inbound Octet Rate, Inbound Unicast Packet Rate, Inbound Non-unicast Packet Rate, Inbound Discard Rate, Inbound Error Rate, Outbound Octet Rate, Outbound Unicast Packet Rate, Outbound Non-unicast Packet Rate, Outbound Discard Rate, Outbound Error Rate, Ethernet Undersize Packet Rate, Ethernet Oversize Packet Rate, Inbound Octets, Inbound Unicast Packets, Inbound Non-unicast Packets, Inbound Discards, Inbound Errors, Outbound Octets, Outbound Unicast Packets, Outbound Non-unicast Packets, Outbound Discards, Outbound Errors, Ethernet Undersize Packets, Ethernet Oversize Packets

System: Name, location, contact, IP address, subnet mask and gateway

Configuration Backup: Save/restore configuration

Reset: Reset to factory defaults through console port

Physical

Case:	Metal
Color:	White case, grey faceplate
Dimensions (W x D x H):	17.3 x 8.3 x 1.7 inches, 44 x 21 x 4.4 cm
Mounting:	Desktop or rack (rackmount kit included)
Operating Temperature:	32° to 104° F (0° to 40° C)
Relative Humidity:	10% to 90% non-condensing
Power:	Internal universal switching, 100-240 VAC, 50/60 Hz, maximum 50 watts

Standards Compliance

Network:	IEEE 802.3 10BaseT IEEE 802.3u 100BaseTX IEEE 802.3ab 1000BaseT IEEE 802.1p Class of Service Prioritization IEEE 802.1q Virtual LAN (VLAN)
Safety:	UL, cUL, CB (IEC 60950)
Emissions:	FCC Class A, CE Mark Class A

Packing List

Product:	GX5-2400W switch
Localized Power:	Grounded 3-wire power cord
Documentation:	Quick Start Guide
CD-ROM:	User's Guide and other documentation

Support

Technical Support:	24-hour support via web and ftp. 2-year email and telephone support
Product Warranty:	2-year product warranty covers defects in manufacturing and workmanship
Product Updates:	Free download of maintenance releases from asante.com website

ORDERING INFORMATION

Model Name*	Description
GX5-2400W	24-port Smart Gigabit Ethernet Switch

* For international part numbers, please refer to the Asanté price list.



Asante Networks, Inc. 2223 Oakland Road, San Jose, CA 95131 USA · Phone 408.435.8388 · Website www.asante.com
© 2006 Asante Networks, Inc. All rights reserved. Asante Networks, Inc., IntraCore and FriendlyNET are registered trademarks of Asante Networks, Inc.. Auto-Uplink is a trademark of Asante Networks, Inc.. All other names may be trademarks or registered trademarks of their respective owners. Specifications subject to change without prior notice.