



## Featured Product

### Flextronics 8 Port Infiniband SDR Switch



### Description

The Flextronics 8 Port 1U Infiniband SDR switch is based on Mellanox Infiniscale technology. This 8 port SDR switch delivers bandwidth of up to 160 Gb/sec with sub 180ns latency. Ideally suited for High Performance Computing clusters, this cost effective Flextronics switch provides industry standard Infiniband switching capabilities at a fraction of the cost of 10GE or other proprietary interconnects. This low cost switch coupled with low cost Infiniband HCA's provide for the most cost effective 10Gb/sec interconnect.

### Key Features

- *Modular 8 Port 4X SDR*
- *Non-Blocking, Full Wire Speed*
- *Ultra Low Latency*
- *160 Gigabits of Bandwidth*

### 10Gb/s at \$100 per Port

This 8 port 4X non-blocking SDR Infiniband switch can seamlessly integrate with other like switches or can be coupled with the high density 144 port and 288 port Infiniband switches from Flextronics. Whether you are interested in building small department clusters or want to build a Top 500 cluster, Flextronics switches are the most cost effective and highest performing Infiniband switches in the market.

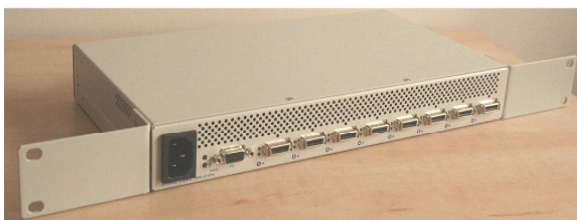


Figure 6: View of Rack Adapter Assembled on Rear Panel Sides



### Management

The Flextronics 8-Port Infiniband Switch is compatible with any standard Infiniband compliant Subnet Management software running externally. Once connected to an Infiniband fabric, the Infiniscale firmware can be updated and managed from remote Infiniband hosts. Internal temperature, voltages, and the health of the power and fan modules can also be monitored over the Infiniband fabric. Also supported is a standard 9 pin D-type connector for debug debug and firware upgrade purposes

### Enterprise Class Switch

This compact 1U chassis features 8-Ports of 10Gb/s Infiniband switching at the lowest cost per port. Ideally suited for small virtualized data centers as well as departmental or personal supercomputing clusters, this switch is ideal for a wide range of applications requiring high bandwidth and low latency. Coupled with low cost Infiniband SDR HCA's, one can build high performance Infiniband clusters at prices rivaling standard Gigabit Ethernet solutions. The Flextronics 8-Port Infiniband SDR switch provides a very low cost way for users to evaluate and build out cost effective, high performance Infiniband clusters.

## Flex 8 Port SDR Infiniband Switch

### Benefits .....

- Lowest Cost Per Port
- Proven Infiniband Technology
- Industry Leading Bandwidth
- Based on Mellanox Switch
- Ultra low latency

### Key Features .....

- 8 Ports SDR in 1U, 19" rack mountable
- Supports standard 4X Copper Infiniband cables or 300m fiber connections via media adapter modules
- 160 Gb/sec bandwidth
- 1 Year warranty with optional extended warranty support
- 100% compatible with all SDR Infiniband HCA's

# *Flextronics 8 Port SDR Infiniband Switches*

## **Mechanical and Environmental Specs**

- Dimensions (Stand Alone)
  - 1U x 6.9" x 12.4"
  - 43.6mm x 175mm x 315mm
- Dimensions (with included 19" rack brackets)
  - 1U x 6.9" x 19"
  - 43.6mm x 175mm x 482.6mm
- Weight : 7.7 lb (3.5 kg)
- Operating Temperature : 0c to 50c
- Power Consumption 45W Max

## **Switch Specifications**

- 8 Port 4X SDR Infiniband
- Aggregate Throughput : 160Gb/sec
- Cut Through Latency : 180ns
- Single chip Mellanox Infiniscale device
- Interconnect Options : copper and/or fiber with optional third party media adaptor
- LED Status indicators for Infiniband Ports and Major Components
- Linear Forwarding Table : 48K Entries
- Multicast Table Size : 16K Entries
- Virtual Lanes : 8
- MTU Size : 4096 Bytes Max

## **Ordering Part Numbers**

**8—Port 4X SDR Infiniband Switch**

- **F-X430066**

### **Contact Information**

**Web : [www.ibswitches.com](http://www.ibswitches.com)  
E-mail : [info@ibswitches.com](mailto:info@ibswitches.com)  
Phone : (408)331-6444  
Fax : (408)331-6422**