

HP Jetdirect 280m

802.11b internal wireless print server



The HP Jetdirect 280m 802.11b internal wireless print server is a simple and flexible way for businesses and consumers to link to their HP peripherals with LIO connectivity slots in a wireless 802.11b network environment.

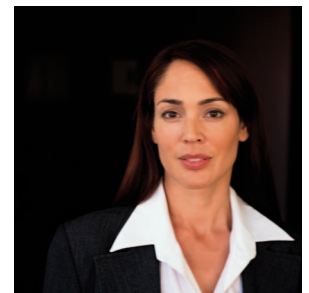
With the wireless print server, HP peripherals can be placed anywhere in the office or home. Users can enjoy high-quality HP network printing and scanning without the time-consuming and costly constraints of network cables.

Wireless

- **Robust networking without the constraints or expense of running wires.** Provides 802.11b networking for HP personal LaserJet printers, HP Business Inkjet printers, and HP All-in-One peripherals with LIO connectivity slots.
- **Wi-Fi certified for reliable connections.** Small offices or home users can conveniently and confidently connect to IEEE 802.11b wireless networks and wireless networking products from multiple vendors.
- **Advanced security protects your wireless transmissions.** Send data to and from your HP peripherals without worrying about unwanted interception (supports WPA, 40/64-bit and 128-bit WEP encryption, 802.1x authentication [EAP-PEAP, LEAP, EAP-TTLS, EAP-TLS, EAP-MD5] with RADIUS servers).

Simple and flexible

- **Enjoy the freedom and convenience of wireless networking.** Place network connected peripherals anywhere in the office and move them without redesigning the network cabling.
- **Sleek design eliminates need for cables or a separate power supply.** Modular internal design slides easily into the LIO slot of any compatible HP peripheral, eliminating the need for print server cables, USB or parallel cables, and power cord.



- **Easy-to-install on the network.** Using the HP Install Network Printer Wizard, and the included install CD and setup poster; users can exercise total control over the installation and configuration process.
- **Setup and manage using your Web browser.** An embedded Web server provides simple one-to-one network configuration and management as well as useful printer information and diagnostics.
- **Take advantage of future enhancements.** With 4 MB of Flash-upgradeable memory, businesses or home offices can connect to the Internet and download the latest firmware, thereby taking advantage of future features and protecting your peripheral investment.

Compatible

- **Seamless integration on your existing network.** Supports a wide variety of major network operating environments and wireless products from many vendors as well as a wide variety of network protocols including TCP/IP (IP Direct Mode, LPD, FTP, IPP), IPX/SPX, DLC/LLC, and EtherTalk.
- **Maximizes your HP peripheral's performance.** Designed and tested to provide optimal performance with HP peripherals with LIO connectivity slots, such as personal HP LaserJet printers, Business Inkjet printers, and All-in-One peripherals.



HP Jetdirect 280m

Technical specifications

HP Jetdirect 280m wireless internal print server (product number: J6044A)

Network types	802.11b Wireless Ethernet
Supported peripherals	Supports LIO-based HP peripherals including: HP Color Inkjet Printer cp1160, HP Color Inkjet Printer cp1700, HP Officejet D Series, HP Officejet 7100 Series, HP LaserJet 1300
Data rates	11, 5.5, 2, 1 megabits per second
Compatible network operating systems and protocols	
TCP/IP	
IP Direct Mode	Microsoft® Windows 98, Me, NT 4.0, 2000, XP, XP 64-bit, Server 2003; Novell NDPS; HP-UX 10.20, 11.x; Solaris 2.5x, 2.6, 7, 8 (SPARC systems only); IBM AIX 3.2.5 and later; MPE-iX
LPD (Line Printer Daemon) ²	Microsoft Windows 98, Me, NT 4.0, 2000, XP, XP 64-bit, Server 2003; Novell NetWare 4.2, 5.x, 6; Apple Mac OS 8.6 and later; Red Hat Linux 6.x and later, SuSE Linux 6.x and later; HP-UX 10.20, 11.x; Solaris 2.5x, 2.6, 7, 8; SunOS 4.1.x; IBM AIX 3.2.5 and later; SCO UnixWare 7.x, OpenServer 5.x; SGI IRIX 6.x; Digital UNIX® 4.x; IBM OS/2 Warp 4.x; any RFC1179-compliant system
FTP Printing ²	Microsoft Windows 98, Me, NT 4.0, 2000, XP, XP 64-bit, Server 2003; Mac OS 8.6 and later; Red Hat Linux 6.x and later, SuSE Linux 6.x and later; HP-UX 10.20, 11.x; Solaris 2.5x, 2.6, 7, 8; SunOS 4.1.x; IBM AIX 3.2.5 and later; SCO UnixWare 7.x, OpenServer 5.x; SGI IRIX 6.x; Digital UNIX® 4.x; IBM OS/2 Warp 4.x
IPP	Microsoft Windows NT 4.0, 2000, XP, XP 64-bit, Server 2003; Novell NetWare 4.2, 5.x, 6
IPX/SPX	Novell NetWare 3.2, 4.2, 5.x, 6, NDPS; Microsoft Windows 98, Me, NT 4.0, 2000, XP 64-bit, Server 2003
DLC/LLC	Microsoft Windows NT 4.0 ¹
Apple Talk	Apple Mac OS 8.6 and later
Wireless security	WPA, WEP encryption (40/64- and 128-bit), and 802.1x authentication (EAP-PEAP, LEAP, EAP-TTLS, EAP-TLS, EAP-MD5) with RADIUS servers
Management security	SNMP v3, SSL/TLS (HTTPS)
Other network protocols supported	Auto-IP, Apple Rendezvous compatible, NDS, Bindery, NCP, Telnet, SLP, IGMP, NDPS, iPrint, BOOTP/DHCP, WINS, SNMP v1 & v2c, HTTP
Browsers supported	Microsoft Internet Explorer (5.0 or above), Netscape (4.75 or above)
Dimensions (w x h x d)	2.7 x 3.3 x 1.0 in
Weight	2.4 oz
What's in the box	HP Jetdirect 280m internal print server, Quick Setup poster, CD-ROM with HP Install Network Printer Wizard, HP Jetdirect Wizard Wireless Setup software and user guide and help tools

¹ Requires software from the NOS vendor.

² May require software from the NOS vendor or 3rd party vendor.

General features

802.11b wireless Ethernet, support for LIO-based peripherals, LED indicator for wireless signal strength and status, Embedded Web server for configuration and management of a single networked peripheral, HP Web Jetadmin compatibility for configuration and management of networked peripherals across an organization

Environmental ranges

Operating temperature: 32 to 131° F (0 to 55° C)
 Storage temperature: -4 to 158° F (-20 to 70° C)
 Operating humidity: 0 to 95% RH (recommended 15 to 95% RH)
 Storage humidity: 0 to 95% RH

Power consumption

2.5 watts maximum
 ENERGY STAR® compliant

Nominal output power

14 dBm

Power certification

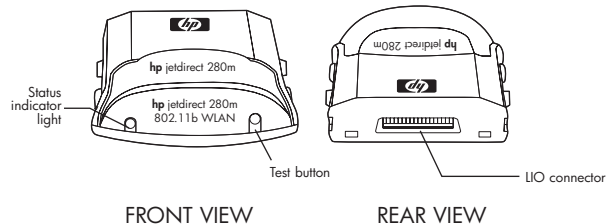
Safety: Complies with IEC-950:1991+A1, EN60950:1992+A1, A2, A3, A4, A11
 Electromagnetic compatibility: USA (FCC Title 47, Part 15 Class-B)
 Wireless telecommunications: ETS 300-328, ETS 301 489-17, FCC 15.247

Warranty

One-year limited hardware warranty

Ordering information

Product number	HP product
J6044A	HP Jetdirect 280m 802.11b wireless internal print server



HP recommends Microsoft® Windows® XP Professional for mobile computing.

Microsoft, Windows, and Windows NT are U.S. registered trademarks of Microsoft Corp.

© 2003 Hewlett-Packard Development Company, L.P. The information contained herein is subject to change without notice and is provided "as is" without warranty of any kind. The warranties for HP products are set forth in the express limited warranty statements accompanying such products. Nothing herein should be construed as constituting an additional warranty. HP shall not be liable for technical or editorial errors or omissions contained herein.

For more information visit our website at www.hp.com

5981-1008ENUC, 08/2003

