

# Nokia IP Security Solutions

## Nokia IP380

Nokia IP380 is a pre-configured, purpose-built IP security platform for small to mid-sized enterprises.

Nokia IP380 combines market-leading security software and the Nokia IPSO™ secure operating system for a secure, reliable and manageable security solution. It is a cost-effective system for small to mid-sized enterprise markets demanding excellent performance for firewall, VPN, intrusion protection and other key security applications.

Nokia delivers industry leading solutions across Nokia IP Security Platforms that meet stringent customer security needs with best-of-breed technology partners. These partners include Check Point Software Technologies for VPN-1/FireWall-1 security software and additional partners through the Nokia Security Developers Alliance.

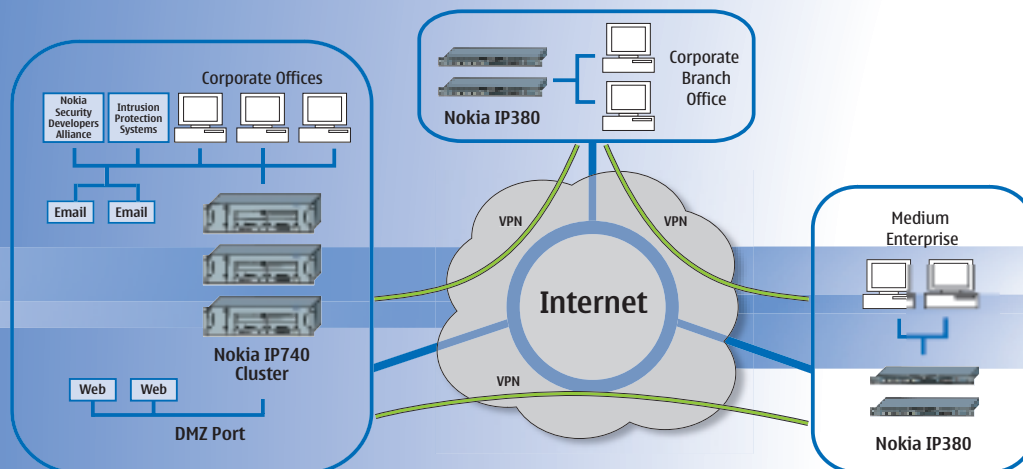
Nokia IP380 delivers best-in-class price/performance against the competition for real-world mixed traffic environments, as well as offering high port density for a 1 RU system. It's an excellent choice for small to mid-sized enterprise customers who need to grow with robust, secure, reliable and easy-to-manage low Total Cost of Ownership (TCO) solutions.

Other key features available for Nokia IP380 include on-board encryption as well as the option to add a higher performing encryption card. It supports very large routing tables (BGP complex OSPF environments), and provides maximum expansion capacity with up to eight 10/100 Ethernet ports and now support for Multi-Mode Fiber GigE. Additionally, Nokia IP380 supports synched firewalls for "High Availability" environments, and comes with the industry-proven hardened Nokia IPSO operating system



with its web and CLI interface. Nokia IPSO offers a wide variety of "high value" features such as Nokia patented IP Clustering. In addition, Nokia IP380 with Nokia IPSO supports other applications such as Nokia Horizon Manager and new Developers Alliance partner applications from Tripwire, SurfControl, Open Service and others. Nokia IPSO supports a wide array of protocols, such as RADIUS client and server, TACACS+ Client and others.

Best of all, security, performance and reliability are all backed by world-class Nokia First Call—Final Resolution global support.



# Nokia IP380 At a Glance

## Internet Protocols

- ARP
- BGP-4 [software option]
- Bootp/DHCP Relay
- CIDR
- COPS
- Diff Serv (Expedited Forwarding)
- DVMRP
- GRE
- ICMP
- ICMP Router Discovery
- IGMP
- IGRP [software option]
- IP (RFC 791)
- IPv6 core protocols
- OSPF
- PIM-DM
- PIM-SM
- Multicast Tunnels
- RIP
- RIPv2 with MD5 authentication
- Route Aggregation
- Route Redistribution
- Static Routes
- UDP
- Un-numbered Interfaces

## LAN Support

- 10/100 Mbps Ethernet
- Multi-mode fiber Gigabit Ethernet
- Transparent (Bridging) mode
- VLAN tagging

## WAN Support

- Frame Relay
- HDLC (Cisco-compatible)
- ISDN [interface card option]
- PPP
- T1 [interface card option]
- E1 [interface card option]
- V.35 [interface card option]
- X.21 [interface card option]

## Americas

Tel: 1 877 997 9199

Email: ipsecurity.na@nokia.com

## Asia Pacific

Tel: +65 6588 3364

Email: ipsecurity.apac@nokia.com

## Europe, Middle East and Africa

France +33 170 708 166

UK +44 161 601 8908

Email: ipsecurity.emea@nokia.com

## Performance

- Firewall – large packets
  - 600 Mbps w/ 10/100 Ethernet
  - 1 Gbps w/ MMF GigE
- VPN – large packets
  - 90 Mbps w/ on board chip
  - 120 Mbps w/ accelerator card
- AES

## Management

- Nokia Network Voyager (HTTP server)
- Command Line Interface (CLI)
- Command line utilities
- DHCP
- FTP
- SNMPv1/v2c/v3
- SSH (for CLI)
- SSL/TLS (for Nokia Network Voyager)
- Telnet (for CLI)
- Supported in Nokia Horizon Manager

## Environment

- Temperature: 5°C to 40°C
- Humidity: 10% - 90% (non-condensing)
- Altitude: 10,000 ft

## High Availability

- Nokia IP Clustering
- VRRP
- Check Point VPN-1/FireWall-1 State Sync

## Security

- Access Control Lists
- Centralized Authentication
- Cryptographic Acceleration
- DNS Client
- IPSec
- MD5 Routing Authentication (RIPv2)
- NTP Client and Server
- RADIUS Client
- Read/Write and Read-Only Administrative Access
- S/Key (one-time password)
- SSH
- SSL/TLS
- TACACS+ Client
- Traffic Management

## System Indicators

- Power and Fault
- Warning
- Port Status

## Certifications

- ICSA
- EAL4 Common Criteria (ISO/IEC 15408)

## Safety

- UL1950, CAN/CSA 22.2, No. 950-M95, (CE Mark) EN60950:1992, A1, A2:1993, A3:1995, A4:1997, A11:1998 with Japanese National Deviations

## Emission Compliance

- FCC Part 15, Subpart B, Class A, EN50024, EN55022A 1998, CISPR 22 Class A 1985, EN61000-3-2, EN61000-3-3

## Immunity

- EN55024 1998



## Nokia IP380

Small to Medium Enterprise

### Standard:

- 4 integrated 10/100 Base-T Ethernet ports
- 2 slots for Network Interface Cards
- 2 Type II PCMCIA
- Encryption accelerator on board

### Optional Interfaces:

- Dual port 10/100 Ethernet
- Single port serial V.35
- T1 single port
- E1 single port
- ISDN single port EU only
- Dual port MMF GigE
- Single port serial X.21

### Hardware:

- Height 1.75 in. / 4.5 cm (1U)
- Depth 16 in. / 41 cm
- Width 17 in. / 44 cm
- Weight 17 lbs / 7.7 kg
- Standard 19-inch rack mountable
- Front access for maintenance

### Power Requirements:

- AC Input Voltage 100-120V/200-240VAC
- Frequency 50/60Hz
- AC Input Current 1.5/75A

