



PERLE CS9000

Console Server

Features & Capabilities

- Extremely easy to configure reducing setup time
- In- and Out-of-Band management allowing LAN/WAN or dial in access to network devices
- No break signal issued on power cycle to prevent costly Sun Server reboots
- Local or remote configuration for ease of management
- Local or remote upgrades protect investment and simplify management
- Integrated security features provide secure access to critical network devices
- 1U Rackmount keeps use of costly space to a minimum
- Standard network management integrates seamlessly with existing configuration commands

Application

- Server Farm Management
- Network Applications Management
 - Routers
 - Remote Access Servers
 - Firewalls
 - PBX's
 - Switches

The Perle CS9000 Console Server offers network managers a reliable and cost-effective solution to remotely manage and trouble-shoot distributed server farms/racks and network appliances (routers, RAS etc). By connecting the console management ports on these network devices to the serial ports on the Perle CS9000 Console Server they can be managed in-band or out-of-band via a corporate LAN/WAN or dial-in connection.

In-Band Management

The Perle CS9000 allows a network administrator to Telnet to the appropriate port on the console server across a LAN/WAN to carry out routine management or trouble shooting activities. Using the Perle CS9000 in-band management functionality, administrators can gain access to attached devices from anywhere on the LAN/WAN provided they know the devices IP address. The Perle CS9000 also allows multiple devices to be accessed simultaneously.

Out-of-Band Management

In the event of a network failure, the Perle CS9000 allows the administrator to gain access via a modem attached to one of the serial ports on the unit and from there to access all attached devices.

The Perle CS9000 is the ideal solution for network administrators to diagnose and fix problems on connected devices from anywhere on the LAN/WAN, or via a modem. This generates significant saving of administrator's time and reduces costs by keeping system disruption to a minimum.

Hardware Configuration

The Perle CS9000 is available in either 16 RS232 or 24 RS232 serial port versions, both delivered in a slim, attractive enclosure suitable for rack-mounting in 1U high increments. Each serial port is

capable of providing up to 230 Kbps connection speeds. Unlike most other console server solutions the Perle CS9000 does not send a break signal when power cycled. This is of particular benefit in certain server environments (e.g. with Sun Sparc Servers), which react to by re-booting break signals.

Network Security

The Perle CS9000 provides a comprehensive suite of security features to allow an organization to implement robust security planning to prevent unauthorized access. These include SLIP and PPP protocols (incorporating PAP and CHAP) for Remote User dial-in plus support for RADIUS server environments.

Management and Diagnostics

A wide array of software tools allows the Perle CS9000 to be configured, managed and upgraded either locally or remotely over the network and even via the Internet. These tools include JETset, for complete port management from any location via a Web browser, and easy downloads of software upgrades to the unit's flash memory. Command line and menu interfaces are also included, as is a separate local management port. Industry standard control and management facilities are also supported - SNMP, BOOTP, DHCP and DNS.

Class Leading Service and Support

The Perle CS9000 is backed by the best service and support in the industry. All units come with Perle's Limited Lifetime Warranty for registered users. This includes free 7/24 support for channel partners, plus a lifetime return to factory replacement guarantee.



Technical Specifications

Connectivity

Serial Ports

- CS9016 model: 16 RS232 serial ports
- CS9024 model: 24 RS232 serial ports

BackBone LAN Attachment

- 10BaseT RJ45 + AUI

Management Port

- RS232 DB25 Female

Physical

Architecture

- 32 bit processor
- Custom ASICs
- Up to 230 Kbps throughput per port

Serial Port Signals/Protection

- TXD, RXD, RTS, CTS, DTR, DSR, DCD and GND.
- All serial ports are ESD protected to 15kV through air.

LED Indicators

- Main – Power and Network
- Serial – Send and Receive integrated into each RJ45 connector

Power, Dimensions and Weight

- Internal, auto-ranging, 110-240V
- (h) 1.77" (l) 9.01" (w) 16.93" (without ears)
- 4.4lbs

Environmental

- Operating Temperature: 32°F to 110°F
- Storage Temperature: -22°F to 158°F
- Operating Humidity: 5 to 95% RH (non-condensing)
- Storage Humidity: 5 to 95% RH (non-condensing)

Approvals

- EMC: EN55022 Class A, FCCA
- Safety: CSA 22.2.950, NRTL/C, IEC 950, EN60950
- CE Approval

Warranty

- Limited Lifetime Warranty

Software

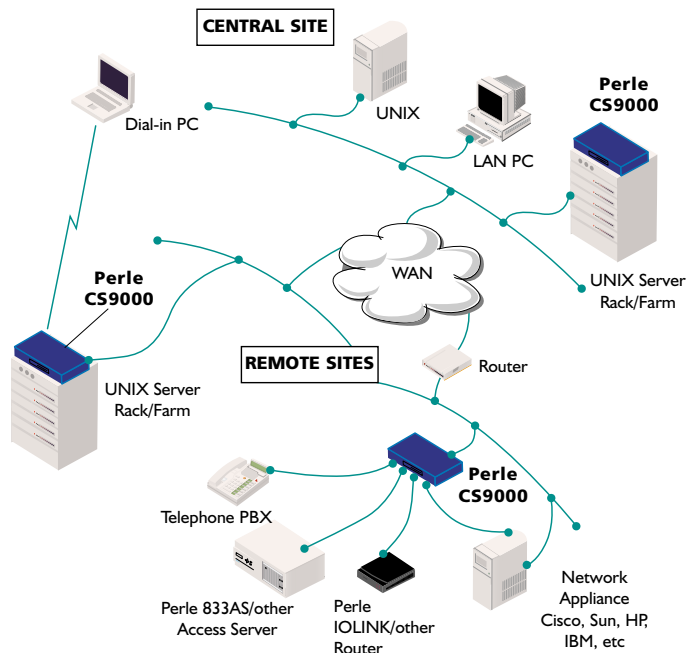
Administration

Local or Remote management using:

- Command Line
- Menu Command Interfaces
- JETset Web-based configuration utility
- Multi-Language Support: English, French, German, Italian, Spanish, Mandarin Chinese, and ability to load a custom language file

Network Protocols

- TCP/IP, UDP, ICMP, SNMP, ARP, Proxy ARP, RARP, DHCP, BOOTP, RIP and Static Routing, PPP, SLIP, CSLIP, TELNET, RLOGIN, CLEAR TCP HTTP, WINS, DNS



Remote Access and Security

- Support for up to 20 different modem types initialisation strings
- RADIUS authentication (RFC2058)
- RADIUS accounting (RFC2059)
- PAP
- CHAP
- Fixed and Roaming Callback

Upgrades

FLASH update via:

- Network using BOOTP, DHCP or TFTP
- Local management port using Jetload

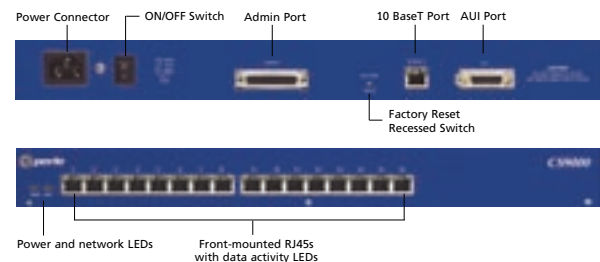
Visit the Perle Website for up-to-date support and availability information.

Ordering Information

Product Order Code and Model Description

CS9016	-16 port
CS9024	-24 port

For more information, contact your authorized reseller



Oak Brook, IL, USA
 Tel: 630 288 4879 • Fax: 630 288 2651
 700 Commerce Drive, 5th Floor
 Oak Brook, IL, 60523

Nashville, TN, USA
 Tel: 615 872 0770 • Fax: 615 872 0771
 565 Marriott Drive, Suite 850
 Nashville, TN, 37214

1 800 GO PERLE
www.perle.com

Perle products are constantly reviewed and updated to meet customers' needs, as such specifications and capabilities are subject to change without notice. We endeavor to keep product descriptions as current as possible; for the latest up-to-date information, please visit our web site at www.perle.com. Perle is a registered trademark of Perle Systems. All other product names are trademarks of their respective holders. Copyright©Perle 2001.