



## Dominion KX II Series

Enterprise-class KVM-over-IP switch with integrated local and secure multiplatform remote access

### KX2-864

- 64 KVM ports
- 1 local + 1 extended local port
- 8 remote users over the network

### KX2-832

- 32 KVM ports
- 1 local + 1 extended local port
- 8 remote users over the network

### KX2-464

- 64 KVM ports
- 1 user at the rack
- 4 remote users over the network

### KX2-432

- 32 KVM ports
- 1 user at the rack
- 4 remote users over the network

### KX2-416

- 16 KVM ports
- 1 user at the rack
- 4 remote users over the network

### KX2-232

- 32 KVM ports
- 1 user at the rack
- 2 remote users over the network

### KX2-216

- 16 KVM ports
- 1 user at the rack
- 2 remote users over the network

### KX2-132

- 32 KVM ports
- 1 user at the rack
- 1 remote user over the network

### KX2-116

- 16 KVM ports
- 1 user at the rack
- 1 remote user over the network

### KX2-108

- 8 KVM ports
- 1 user at the rack
- 1 remote user over the network

## The Most Comprehensive KVM-over-IP Solution in the Industry

### From Small Racks, Test Labs and Branch Offices to the Largest Enterprise Deployments, It's KVM over IP the Way It Should Be.

The Dominion KX II is an enterprise-class, secure, KVM-over-IP switch that provides 1, 2, 4 or 8 users remote BIOS-level control of 8 to 64 servers. It raises the bar in KVM-over-IP technology with standard features such as virtual media, Absolute Mouse Synchronization™, smart card/CAC, blade server support and dual power – available on all models – that maximize performance, security, reliability and versatility.

Raritan's Universal Virtual Media™ lets administrators remotely perform tasks such as installing software, transferring files and backing up data – eliminating trips to the data center. Users can mount drives and media from their desktop to servers in the data center during a KVM session.

The Dominion KX II also features Absolute Mouse Synchronization, which reduces installation time and sets a new standard for mouse synchronization, and transparent keyboard handling, which sends virtually every keystroke combination straight to the server for a near at-the-rack connection experience. These, combined with high definition 1920x1080 video resolution (the industry's highest), Virtual KVM Desktop™ and virtual media features, provide you with the industry's most responsive and productive remote user experience.

Our Virtual KVM Desktop allows users to scale a target server's display to any size, from thumbnails to full-screen video – supported across multiple LCD monitors. Plus, it provides an intuitive user experience – whether the target servers are being accessed locally or remotely – through a common browser-based user interface.

The Dominion KX II is the only KVM switch that uses a certified FIPS 140-2 cryptographic module to meet U.S. and Canadian government security mandates. And with dual power supplies and dual gigabit Ethernet ports, both with automatic failover, the Dominion KX II is the most reliable and secure digital KVM switch in the industry.



**"World's Best KVM"**

### Architecture

The Dominion KX II consists of the KVM-over-IP switch and computer interface modules (CIMs).

- ▶ Each CIM connects to individual and blade server KVM ports and converts video signals for transmission of up to 150 feet over UTP (Cat5/5e/6) cabling.
- ▶ KVM-over-IP remote access, local at-the-rack access and optional modem access.
- ▶ Remote users easily access Dominion KX II from Windows®, Linux®, Sun™ or Mac® desktops via a wide range of Web browsers.
- ▶ Customers can connect together (e.g., tier) multiple Dominion KX II switches and access via a consolidated port list, while in the data center or from a remote PC.
- ▶ Managed by Raritan's CommandCenter® Secure Gateway (CC-SG) or fully functional stand-alone configuration.

# Raises Productivity While Enhancing Security

## Lowest Costs, Increases Productivity While Reducing Mean-Time-to-Repair

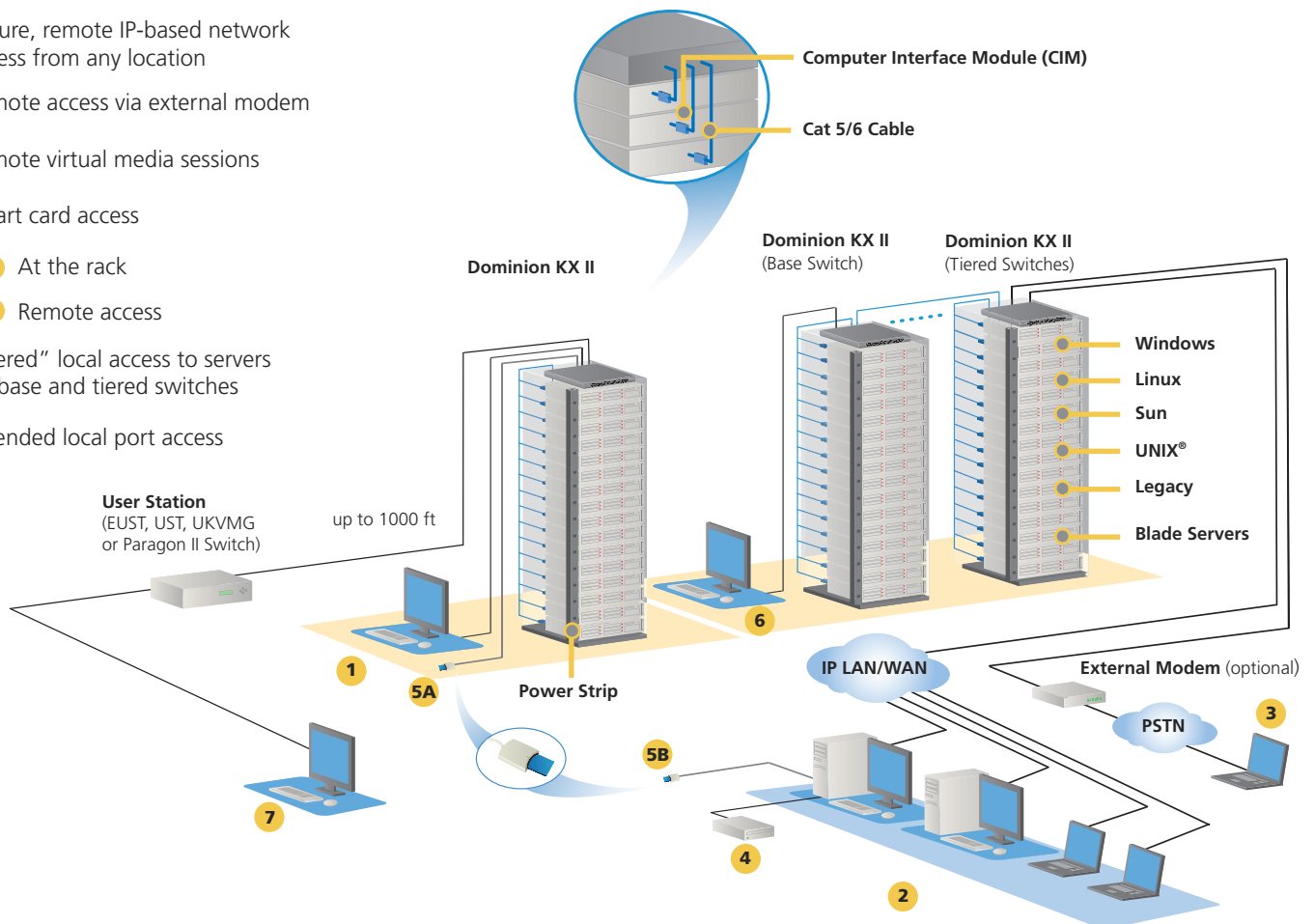
- ▶ Reduces expensive downtime via out-of-band BIOS-level access in emergencies from home, office or while traveling
- ▶ With virtual media, users can perform more operations remotely
- ▶ Eliminates expensive and inconvenient travel to the data center
- ▶ Common Web browser interface for remote and local access
- ▶ Optional remote power strips power on/off servers and provide power statistics
- ▶ Operates with select Paragon® and Dominion KX I CIMs
- ▶ At-the-rack and remote IP access to blade servers
- ▶ KX2-864 and KX2-832 models have an extended local port to extend beyond the rack or to a KX II switch

## Industry Leading Security

- ▶ Uses FIPS 140-2 certified cryptographic module
- ▶ Smart card/CAC authentication – remote and local
- ▶ 256-bit AES or 128-bit RC4 encryption
- ▶ All data encrypted, including video transmissions and virtual media
- ▶ Secure Linux-based appliance
- ▶ Local or centralized authentication with LDAP, RADIUS or Active Directory® support
- ▶ Configurable user and group permissions for server access and control
- ▶ Local and remote access logged and authenticated
- ▶ Stealth mode with user-configurable TCP ports
- ▶ Supports strong password protection
- ▶ Customizable security banner for user login
- ▶ Dual-stack networking: IPv4 and IPv6
- ▶ Can upload customer's digital security certificate

In the diagram below, Dominion KX II provides:

- 1 Local port access at the rack
- 2 Secure, remote IP-based network access from any location
- 3 Remote access via external modem
- 4 Remote virtual media sessions
- 5 Smart card access
  - A At the rack
  - B Remote access
- 6 "Tiered" local access to servers on base and tiered switches
- 7 Extended local port access



## Easy to Install, Easy to Use

### Easy to Install and Scale

- ▶ Easy installation – plug-and-play appliance, up and running in minutes
- ▶ One Dominion KX II device manages an entire rack or row of servers, including blade servers
- ▶ Hot-swap functionality allows users to add, relocate and swap components without disruption as your data center grows
- ▶ Deploy individually with Raritan's CC-SG

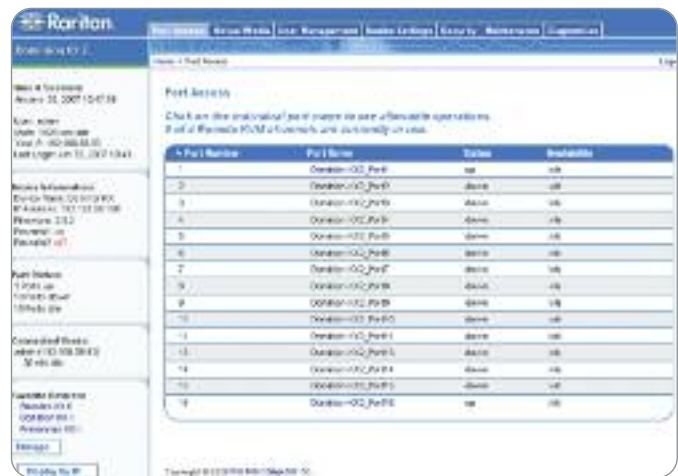
### Features

- ▶ 1, 2, 4 or 8 remote KVM-over-IP channels
- ▶ Highest port density in the industry – models available with 8, 16, 32 and 64 ports
- ▶ Dual power supplies with failover
- ▶ Dual gigabit Ethernet ports with failover
- ▶ Browser-based local user port for at-the-rack access
- ▶ SNMP management and syslog logging
- ▶ Platform independent – CIMs available for PS/2, USB, USB with virtual media, Sun and Sun USB
- ▶ External modem for emergency access
- ▶ Supports Dell®, HP and IBM® blade servers

### Universal Virtual Media

- ▶ Standard on all Dominion KX II models
- ▶ Remotely install OS, load software, transfer files and backup data
- ▶ Enables data center servers to access remote media from your desktop during a KVM connection
- ▶ Works across conforming USB-enabled operating systems and BIOS
- ▶ Includes DVD/CD-Roms, USB mass storage devices, PC hard drives, floppy drives and ISO images
- ▶ Expanded BIOS use of virtual media via dual USB CIM and USB profile feature
- ▶ Remote smart card/CAC support via D2CIM-DVUSB

## Anytime, Anywhere Access and Control



### Highest Quality KVM over IP

- ▶ Award-winning KVM-over-IP technology
- ▶ High Definition (HD) 1920x1080 remote video resolution
- ▶ Fastest, tightest mouse synchronization without changing server mouse settings
- ▶ Intuitive graphical user interface (GUI)
- ▶ High quality video with low bandwidth utilization
- ▶ High (15-bit) color palette support
- ▶ Adaptive video settings for different bandwidth situations

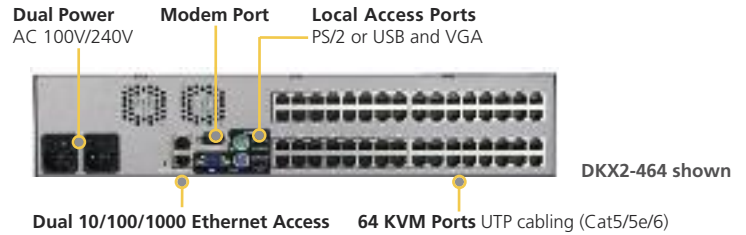
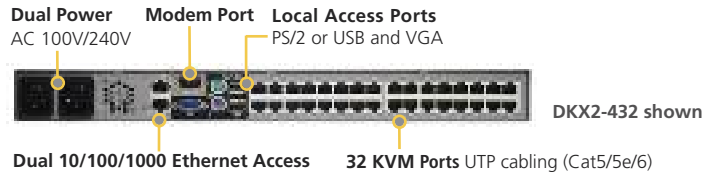
### Virtual KVM Desktop

- ▶ Integrated, browser-based access and control
- ▶ Native Windows and Java clients support Windows, Linux, Sun and Mac users
- ▶ Multibrowser access for Internet Explorer® and Firefox®
- ▶ Full-screen video display and flexible video scaling
- ▶ Transparent keyboard handler
- ▶ Dual monitor KVM client support
- ▶ Supports 1920x1080 and 1600x1200 remote video resolutions, including widescreen formats

Call **1.800.724.8090** or visit [www.raritan.com/KXII](http://www.raritan.com/KXII)

Raritan is a proven innovator of power management, infrastructure management, KVM and serial solutions for data centers of all sizes. In thousands of corporations worldwide, our hardware and software solutions provide facilities and IT managers with the control they need to increase power management efficiency and improve data center productivity.

# Specifications



Dominion KX II Model	Description	Dimensions (WxDxH)	Weight	Power and Heat Dissipation
DKX2-864	64 server ports, 8 remote users, 1 local port + extended local port	17.3" x 13.8" x 3.5"; 439 x 360 x 88mm	12.88lbs; 5.8kg	Dual Power 100V/240V 47/63Hz 1.2A 57W 49 KCAL
DKX2-832	32 server ports, 8 remote users, 1 local port + extended local port	17.3" x 13.8" x 1.75"; 439 x 360 x 44mm	10.40lbs; 4.7kg	Dual Power 100V/240V 47/63Hz 1A 44W 38 KCAL
DKX2-464	64 server ports, 4 remote users, 1 local port for use at the rack	17.3" x 11.4" x 3.5"; 439 x 290 x 90mm	13.73lbs; 6.24kg	Dual Power 100V/240V 47/63Hz 1.5A 64W 55 KCAL
DKX2-432	32 server ports, 4 remote users, 1 local port for use at the rack	17.3" x 11.4" x 1.75"; 439 x 290 x 44mm	9.48lbs; 4.3kg	Dual Power 100V/240V 50/60Hz 1A 63W 54 KCAL
DKX2-416	16 server ports, 4 remote users, 1 local port for use at the rack	17.3" x 11.4" x 1.75"; 439 x 290 x 44mm	9.04lbs; 4.1kg	Dual Power 100V/240V 50/60Hz 1A 63W 54 KCAL
DKX2-232	32 server ports, 2 remote users, 1 local port for use at the rack	17.3" x 11.4" x 1.75"; 439 x 290 x 44mm	9.0lbs; 4.1kg	Dual Power 100V/240V 50/60Hz 0.6A 63W 54 KCAL
DKX2-216	16 server ports, 2 remote users, 1 local port for use at the rack	17.3" x 11.4" x 1.75"; 439 x 290 x 44mm	8.65lbs; 3.9kg	Dual Power 100V/240V 50/60Hz 0.6A 62W 53 KCAL
DKX2-132	32 server ports, 1 remote user, 1 local port for use at the rack	17.3" x 11.4" x 1.75"; 439 x 290 x 44mm	9.0lbs; 4.1kg	Dual Power 100V/240V 50/60Hz 0.6A 62W 53 KCAL
DKX2-116	16 server ports, 1 remote user, 1 local port for use at the rack	17.3" x 11.4" x 1.75"; 439 x 290 x 44mm	8.65lbs; 3.9kg	Dual Power 100V/240V 50/60Hz 0.6A 62W 53 KCAL
DKX2-108	8 server ports, 1 remote user, 1 local port for use at the rack	17.3" x 11.4" x 1.75"; 439 x 290 x 44mm	8.58lbs; 3.9kg	Dual Power 100V/240V 50/60Hz 0.6A 61W 53 KCAL

## Computer Interface Modules (CIMs)

CIM Model	Description	Dimensions (WxDxH)	Weight
D2CIM-DVUSB	Dual USB CIM for BIOS virtual media, smart card/CAC and Absolute Mouse Synchronization	1.7" x 3.5" x 0.8"; 43 x 90 x 19mm	0.25lb; 0.11kg
D2CIM-VUSB	USB CIM for virtual media and Absolute Mouse Synchronization	1.3" x 3.0" x 0.6"; 33 x 76 x 15mm	0.20lb; 0.09kg
DCIM-PS2	CIM for PS/2	1.3" x 3.0" x 0.6"; 33 x 76 x 15mm	0.20lb; 0.09kg
DCIM-SUN	CIM for Sun	1.3" x 3.0" x 0.6"; 33 x 76 x 15mm	0.20lb; 0.09kg
DCIM-USBG2	CIM for USB and Sun USB	1.3" x 3.0" x 0.6"; 33 x 76 x 15mm	0.20lb; 0.09kg
D2CIM-PWR	CIM for remote power management	1.3" x 3.0" x 0.6"; 33 x 76 x 15mm	0.20lb; 0.09kg
P2CIM-SER	Paragon II / Dominion KX II CIM for serial (ASCII) devices	1.3" x 3.0" x 0.6"; 33 x 76 x 15mm	0.20lb; 0.09kg

## Specifications for All Dominion KX II Models

<b>Form Factor</b>	1U and 2U full width, rack mountable (brackets included)
<b>Operating Temperature Humidity</b>	0° - 40° C (32° - 104° F) 20% - 85% RH
<b>Remote Connection</b> Network Modem Port Protocols	Dual 10/100/1000 gigabit Ethernet access; dual-stack: IPv4 and IPv6 DB9(F) DTE TCP/IP, HTTP, HTTPS, UDP, RADIUS, SNMP, DHCP, PAP, CHAP
<b>Local Access Port</b> Video Keyboard/Mouse	HD15(F) VGA Mini-DIN6(F) PS/2 and USB(F), 1 USB front, 3 USB rear
<b>Sample Video Resolutions</b> PC text mode PC graphic mode Sun video mode	640x350, 640x480, 720x400 640x480, 800x600, 1024x768, 1152x864, 1280x1024, 1440x900, 1680x1050, 1600x1200, 1920x1080 1024x768, 1152x864, 1152x900, 1280x1024
<b>Warranty</b>	Two years standard with advanced replacement*



D2CIM-VUSB



D2CIM-PWR



DCIM-PS2



D2CIM-DVUSB

© 2010 Raritan Inc. All rights reserved. Raritan®, Know more. Manage smarter™, Dominion®, CommandCenter®, Paragon®, Virtual KVM Desktop™, Universal Virtual Media™ and Absolute Mouse Synchronization™ are registered trademarks or trademarks of Raritan Inc. or its wholly-owned subsidiaries. All others are registered trademarks or trademarks of their respective owners.

\*To qualify for advanced replacement under the standard warranty, you must register the product at <http://www.raritan.com/support/product-warranty-registration>

Specifications are subject to change without notice.