



## KVM Access Over IP via Web Browser from Anywhere

### IP-Reach

#### TR-Series

Carrier-grade solution with redundant hardware and power, failover Ethernet and integrated modem.

**IPR-TR364** – 4 KVM Ports

#### M-Series

Industrial-strength, small form factor (1U), full-featured solution at a small-medium business price point.

**IPR-M2** – 2 KVM Ports

**IPR-M1** – 1 KVM Port

### Secure, multi-user access and control

IP-Reach is the fastest, most secure way for one or more users to remotely access and manage multiple servers and other IT devices from any PC running a standard Web browser.

- SSL 128-bit RSA public key, 128-bit private key encryption.
- No need to install proprietary software on the managed server or client PC.
- Works with servers connected to Raritan's Paragon®, Z-Series™, MasterConsole™ or KVM switches from other vendors.

**A high-performance solution for remote BIOS-level control** – IP-Reach gives multiple remote users secure, BIOS-level access to manage mission-critical servers.

- High quality video using Raritan's powerful frame-grabber technology.
- Unique video compression algorithm minimizes network bandwidth consumption.
- Gives authorized users direct access to and total control of servers and other IT devices for maintenance, administration, running GUI applications, troubleshooting and even rebooting.

### Access via Internet, LAN/WAN or dial-up modem

To ensure availability anytime, IP-Reach also provides network-independent access via dial-up modem. Target servers are reachable from anywhere, even when the network is unavailable.

### Flexibility and convenience

- Up to four IP-access ports for KVM switches or servers, and up to four direct analog pass-through ports for local "at the rack" access
- Web-based KVM access via Internet, LAN/WAN or dial-up modem
- Web-based serial console access
- Web-based administration of IP-Reach settings
- DHCP or fixed-IP addressing

# Count on IP-Reach for anytime, anywhere access.

## Raritan reliability

- Network-independent access via integrated modem (TR-Series) or dedicated modem port (M-Series)
- Redundant power supplies and dual Ethernet ports with failover (TR-Series)
- SNMP enabled
- Keyboard macro-mapping
- No impact on performance of target servers
- Firmware upgradeable over the network

## Best-in-class security

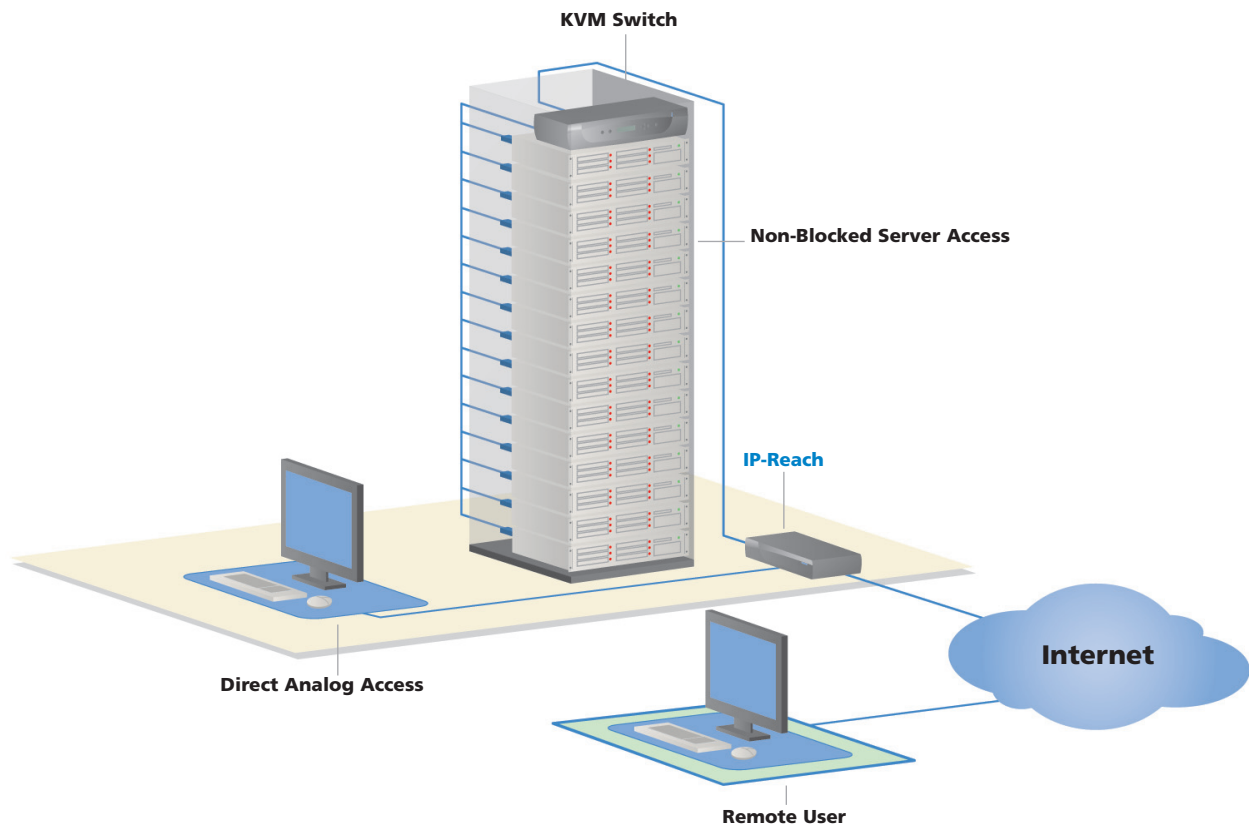
- 100% encryption of all data, including keyboard, video and mouse
- SSL 128-bit RSA public key, 128-bit private key encryption
- Raritan user authentication with optional RADIUS support
- Uses only one open network port to preserve strict firewall settings

- Customizable user profiles for multi-level security
- Private security key and IP filtering
- User event logging
- Option to deactivate modem and/or browser access
- Automatic logout of idle users

## Applications that address every situation

IP-Reach is designed to help you:

- Control servers within a building or across campus
- Manage servers at branch offices from a central site
- Provide remote support for world-wide data centers
- Troubleshoot, reconfigure and reboot servers from home
- Provide convenient, secure, "lights out" server management
- Provide secure access and protection of data on development and production servers



# Enjoy every advantage with IP-Reach.

**Convenience, performance, security — you get it all with Raritan.**

**No proprietary software needed** – IP-Reach works with any standard Web browser. If you can only access your servers over IP from a PC with proprietary client software installed, you don't have true anytime, anywhere access.

**Network-independent access** – When the network is down at 2:00 a.m. and you're 30 miles away, remote access optimized for the LAN isn't very helpful. IP-Reach offers bandwidth optimization for WAN access, plus dedicated modem access.

**Single KVM user interface** – At a console in your data center or a PC in your home. The superior Raritan video compression algorithm and powerful frame-grabber technology ensure faster transmission of high-quality video with bandwidth sensitivity.

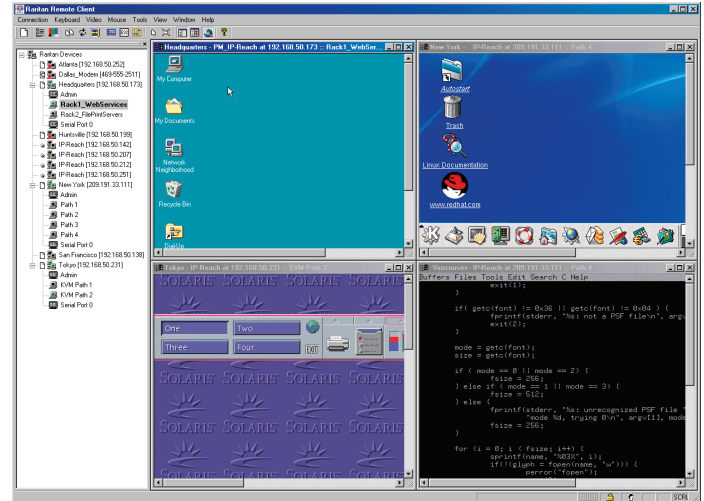
**OS independence** – Unlike software solutions that are platform-specific and OS-dependent, IP-Reach provides remote access to servers across multiple platforms, regardless of their operating systems' health.

**Best mouse synchronization** – IP-Reach virtually eliminates latency, the annoying wait for keystrokes or mouse movements of the target server to "catch up" with your operations at the remote PC.

**CommandCenter-Ready™ \*\*** – IP-Reach works with the Paragon II System Controller (P2-SC), to integrate Paragon with Raritan's centralized CommandCenter® management appliance. CommandCenter seamlessly integrates Paragon II's analog Cat5 KVM switching with Raritan's Dominion Series of digital KVM switches, serial console servers and remote power control into a single, logical network with a single sign-on to a single IP address.

## When you're ready to take control, do it with IP-Reach.

Call 1.800.724.8090 or visit [Raritan.com/ipreach](http://Raritan.com/ipreach)

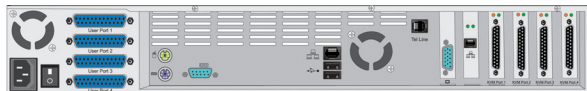


IP-Reach works with standard Web browsers and allows simultaneous cross-platform server viewing. Plus, it works with Raritan KVM switches and those from other vendors, too.

Raritan is a leading supplier of solutions for managing IT infrastructure equipment and the mission-critical applications and services that run on it. Raritan was founded in 1985, and since then has been making products that are used to control millions of servers at more than 50,000 network data centers, computer test labs and multi-workstation environments around the world. From the small business to the enterprise, Raritan's complete line of compatible and scalable KVM and remote connectivity products offers IT professionals the most reliable, flexible and secure in-band and out-of-band solutions to manage data center equipment applications and services, while improving operational productivity. More information on the company is available at [Raritan.com](http://Raritan.com).

# Specifications

<b>IP-Reach TR</b>	
Part Numbers	IPR-TR364
Form Factor	2U, Rack mount chassis
Dimensions	19" (W) x 21.25" (D) x 3.5" (H) 482mm (W) x 540mm (D) x 89mm (H)
Weight	29.5 lbs (13.4 kg)
Power	Redundant Power Supply 110/220V auto-switching; 50-60 Hz
KVM ports	DB25 female — for server(s) or KVM switch(es) IPR-TR364 — 4 ports
User ports	DB25 male — for user console direct analog access IPR-TR364 — 4 ports
Serial Port	DB9M (DTE)
Admin Port	PS/2® Keyboard; PS/2 Mouse; HD15 VGA Video
<b>Remote Connection</b>	
Network	Dual Failover 10/100 Ethernet (RJ45)
Modem	Integrated 56K V.90 (RJ11 port)
Protocols	TCP/IP, UDP, RADIUS, SNMP, SNTP, PAP, CHAP, HTTP
<b>Screen Resolutions</b>	
PC text mode	720x400
PC graphic modes	640x480, 800x600, 1024x768, 1152x864, 1280x1024
Sun® video modes	1024x768, 1152x900, 1280x1024 Accessories (included)
Cables	All cables to connect to PC or KVM Switch included
Remote Access Software	Raritan Remote Control software; or access via Web browser (Win32)
<b>Warranty</b>	
Standard	Two Years with Advanced Replacement*



**IPR-TR364 (rear view)**

<b>IP-Reach M</b>	
Part Numbers	IPR-M2; IPR-M1
Form Factor	1U, Rack mount brackets included
Dimensions	17.2" (W) x 10.4" (D) x 1.75" (H) 436mm (W) x 264mm (D) x 44mm (H)
Weight	8.6 lbs (3.91 kg) — IPR-M2 8.4 lbs (3.82 kg) — IPR-M1
Power	110/220V auto-switching; 50-60 Hz
KVM ports	DB25 female — for server(s) or KVM switch(es) IPR-M2 — 2 ports IPR-M1 — 1 port
User ports	PS/2 Keyboard, PS/2 Mouse, HD15 VGA Video; for user console direct analog access IPR-M2 — 2 ports IPR-M1 — 1 port
Serial Port	DB9M (DTE)
Admin Port	PS/2 Keyboard; PS/2 Mouse; HD15 VGA Video
<b>Remote Connection</b>	
Network	10/100 Ethernet (RJ45)
Modem	DB9M (DTE)
Protocols	TCP/IP, UDP, RADIUS, SNMP, SNTP DHCP, PAP CHAP, HTTP
<b>Screen Resolutions</b>	
PC text mode	720x400
PC graphic modes	640x480, 800x600, 1024x768, 1152x864, 1280x1024
Sun video modes	1024x768, 1152x900, 1280x1024 Accessories (included)
Cables	All cables to connect to PC or KVM Switch included
Remote Access Software	Raritan Remote Control software; or access via Web browser (Win32)
<b>Warranty</b>	
Standard	Two Years with Advanced Replacement*



**IPR-M2 (rear view)**

©2005 Raritan Computer, Inc. Raritan, IP-Reach, Paragon and CommandCenter are registered trademarks of Raritan Computer, Inc.; CommandCenter-Ready, MasterConsole and Z-Series are trademarks of Raritan Computer, Inc.; Sun is a registered trademark of Sun Microsystems, Inc.; PS/2 is a registered trademark of IBM Corporation.

\*To qualify for advanced replacement under the standard warranty, you must register the product at [http://www.raritan.com/standard\\_warranty](http://www.raritan.com/standard_warranty).

\*\*CommandCenter - Ready™ applies to the following models: IPR-M1, IPR-M2, IPR-TR364.

-Specifications are subject to change without notice.