



SonicWALL Continuous Data Protection Solution

CDP SERIES

Real-time Data Backup and Recovery for Local and Offsite Protection

- Local continuous real-time data backup
- Hands free local and offsite backup
- Instant data recovery and file versions
- Robust data management and reporting
- Business application support
- Remote administration
- Archiving
- Central management

The majority of IT Managers and Business Owners agree that tape does not work. Ironically, most organizations are still using fixed-schedule antiquated tape systems that are subject to human error, cumbersome to manage and are notoriously unreliable. Statistics show that:

- Over 30% of IT costs are associated with backup
- 20% of nightly tape-based backup jobs fail
- 40% of dedicated, full-time IT Managers can't recover data from their tape backups

The SonicWALL CDP (Continuous Data Protection) Series resolves this problem with a complete, disk-based backup and recovery solution that meets the needs of organizations and remote offices. These business continuity appliances provide real-time, hassle-free, local backup, as well as hands-free offsite protection for servers, laptops and PCs. This reliable backup solution integrates a host of other features onto one centrally managed appliance to make it easier for IT Managers and business owners to protect their organization's most important asset—their data. And, since SonicWALL CDP only backs up block level differences within each file, the performance of the network is not impacted or compromised.

Features and Benefits

Local continuous real-time data backup replicates data in real-time for servers, laptops and PCs, so that data can be recovered from any previous point in time. Even open files are protected with SonicWALL CDP.

Local and offsite backup ensures that critical data marked for offsite protection is sent to a secure data center. CDP's intelligent and proprietary Adaptive Backup Engine (ABE) includes network throttling to ensure offsite backup is non-evasive during working hours.

Instant data recovery and file versions enable any user on the network to retrieve every version of the file, not just the latest version. Using a simple administration interface, users can go back to any point in time – minutes, hours, days or more.

Robust data management tools sit on a flexible search, command and reporting framework that provides custom reports. Also included are e-mail alerts for real-time updates and offsite data storage visibility.

Seamless support for databases and applications is provided without the need to integrate third-party software modules. Common business applications include Quickbooks, PeachTree, ACT!, Goldmine, Exchange Server, Great Plains, Solomon, Microsoft applications such as: Navision, BizTalk, Business Contact Manager, CRM, InfoPath, Commerce Manager, Sharepoint, Project Server and MS Office products including Outlook and Outlook Express.

Remote administration allows IT administrators to manage SonicWALL CDP, recover deleted files or view vital statistics from a remote location.

Archiving is available for organizations that need to store snapshots of their offsite data for extended periods of time to meet industry and government regulations.

Central management allows administrators to set backup and recovery policies centrally with an easy-to-use interface. Policies can be set at the network or user level.



SonicWALL Continuous Data Protection – How Does It Work?

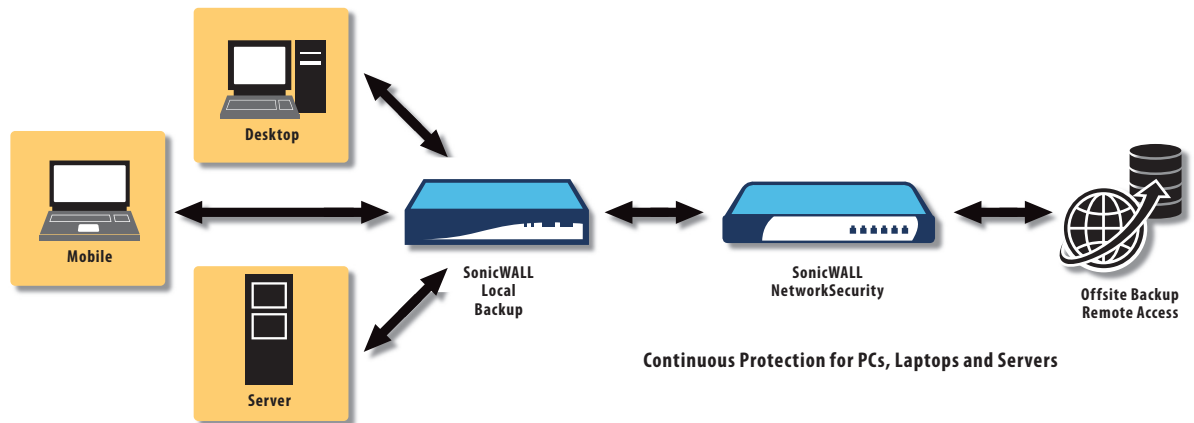
SonicWALL CDP has three components: the SonicWALL CDP appliance, the enterprise manager and the agent tool.

- **SonicWALL CDP Appliance** – This dedicated disk-backup appliance enables all the features and functions included with the product such as storage, file and application versioning, block level difference, offsite transmission and encryption. The SonicWALL CDP can be centrally administered or configured from the Enterprise Manager.
- **Enterprise Manager** – The SonicWALL Enterprise Manager provides system activity monitoring and file-level visibility into all clients that are active on the

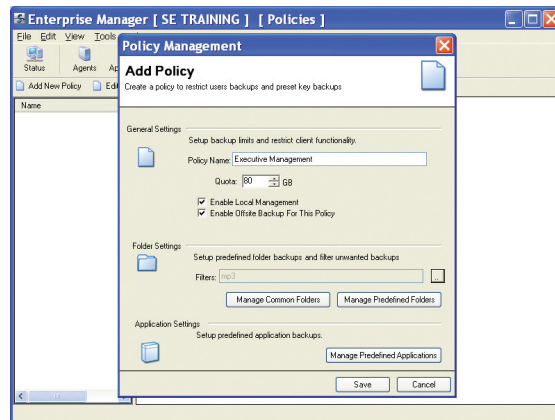
CDP appliance. IT Administrators can recover files for customers from a remote location, enforce consistent backup policies and control features available to end users.

- **Agent Tool** – The Agent Tool is installed on every laptop, PC or server that is connected to the CDP appliance. It provides configuration, status, monitoring and file, and disaster recovery for that machine. End-users can recover file versions through a simple user interface.

*Continuous
real-time
data protection
with local
and offsite
backups*

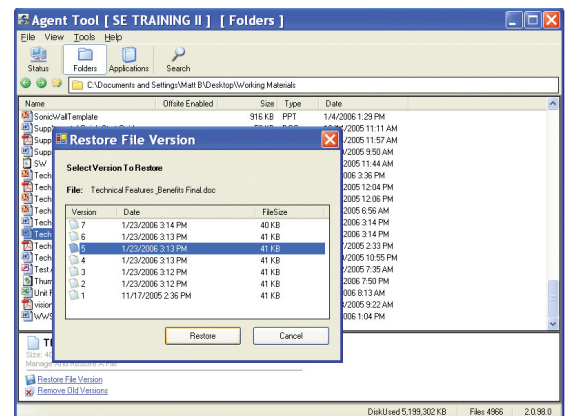


The SonicWALL CDP Series provides continuous real-time data protection for servers, laptops and PCs. Data is protected first locally to enable instant recovery, and then offsite to a secure data center.



Easy configuration of back-up policies

Administrators can set policies to ensure certain files or applications are backed up. End-users can be given rights to retrieve their own data.



Easy end-user data recovery

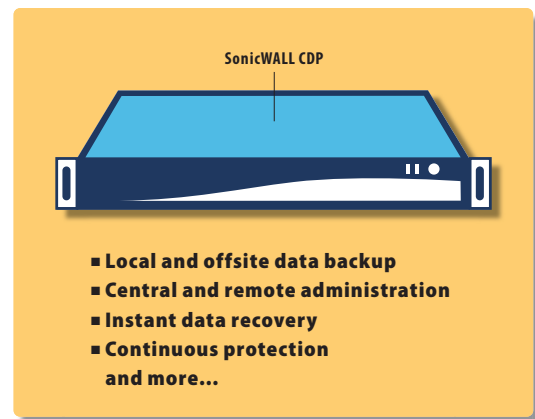
Version catalogs generated by SonicWALL CDP's continuous data protection technology provide for easy, instant, one-click recovery of data to minimize downtime.

SonicWALL CDP Series vs. Tape, Disk and Offsite

Common Backup and Recovery Risks	SonicWALL CDP Solution
Requires manual intervention	Automated and hassle-free
Unprotected against local disasters	Automatic offsite backup
Limited security	AES 256-bit encryption at local and offsite levels
Unreliable media	Reliable disk-based storage
Complicated data recovery	One-click recovery
Susceptible to corruption and viruses	Enhanced compression and linux kernel eliminates virus risk
Long backup windows	Continuous data protection
Unprotected open files	Open file backup
Difficult to use	Easy to use
Point products or solutions	All-in-one solution



Complicated



Simple

Reliability and Simplicity

The SonicWALL CDP Series enables organizations to achieve complete data protection with the convenience of a single appliance. This comprehensive solution features secure automatic local and offsite protection, instant recovery and central/remote administration that enables organizations to increase productivity and decrease costs. Ultimately, SonicWALL CDP is easier-to-use and more reliable than traditional systems because it does not require integration or management of multiple point products.

Specifications



SonicWALL CDP Series

SonicWALL CDP 1440i
(US and Canada)
01-SSC-6320

SonicWALL CDP 2440i
(US and Canada)
01-SSC-6321

SonicWALL CDP 3440i
(US and Canada)
01-SSC-6322

SonicWALL CDP 4440i
(US and Canada)
01-SSC-6323

SonicWALL Continuous Data Protection Series

Features	CDP 1440i	CDP 2440i	CDP 3440i	CDP 4440i
Continuous Data Protection	Yes	Yes	Yes	Yes
File Versioning	Yes	Yes	Yes	Yes
Central Administration	Yes	Yes	Yes	Yes
Desktop, Laptop, Server Backup	Yes	Yes	Yes	Yes
Remote Administration	Yes	Yes	Yes	Yes
Open Files Backup	Yes	Yes	Yes	Yes
Policy Based Backup	Yes	Yes	Yes	Yes
Active Directory Backup	–	Yes	Yes	Yes
SQL Server Support	–	Yes	Yes	Yes
MS Exchange Support	–	Yes	Yes	Yes
Technology	CDP 1440i	CDP 2440i	CDP 3440i	CDP 4440i
Core Compression Technology	Standard	Standard	Enhanced	Enhanced
Encryption	AES 256-bit	AES 256-bit	AES 256-bit	AES 256-bit
Throughput	Standard	Standard	Accelerated	Accelerated
Capacity	CDP 1440i	CDP 2440i	CDP 3440i	CDP 4440i
Users	15 or fewer	30 or fewer	75 or fewer	Unlimited
Servers	3	5	Unlimited	Unlimited
Capacity Base Compressed*	160 GB 192 GB	250 GB 300 GB	400 GB 800 GB	600 GB 1.2 TB
Hardware	CDP 1440i	CDP 2440i	CDP 3440i	CDP 4440i
Chassis	Mini	Mini	1U rack-mountable	2U rack-mountable
RAID	–	–	RAID 1	RAID 5
Interface	1 x 10/100 Base-T Ethernet	1 x 10/100 Base-T Ethernet	10/100/1000 GIG LAN	10/100/1000 GIG LAN
Power Supply	Built-in 60W DC power board	Built-in 60W DC power board	Thermal Control 260 W AC with PFC	400W AC Power Supply with PFC
Input	(AC 100 ~ 240 V)	(AC 100 ~ 240 V)	(AC 100 ~ 240 V, 60-50Hz, 5A)	(AC 100 ~ 240 V, 60-50Hz, 5A)
Output	(DC 12V, 5A)	(DC 12V, 5A)	(DC 5V + 3.3V)	(DC 5V + 3.3V)
Fans	2 x 40 mm cooling fans	2 x 40 mm cooling fans	1 x 100 mm 5000 rpm fan	30 x 80 mm ball-bearing fans
Dimensions	11.5 x 10.75 x 2.5 in	11.5 x 10.75 x 2.5 in	16.8 x 14.0 x 1.7 in	19.0 x 25.3 x 3.5 in
Weight	10 lbs	10 lbs	20 lbs	43 lbs

* Product capacity specified in gigabytes (GB) are terabytes (TB) where 1 GB = 1,000,000,000 bytes and 1 TB = 1,000,000,000,000 bytes. Compressed capacity assumes 1:2:1 for standard data compression and 2:1 for enhanced data compression. Capacity may vary and is data dependent.

SonicWALL, Inc.

1143 Borregas Avenue
Sunnyvale CA 94089-1306

T +1 408.745.9600
F +1 408.745.9300

www.sonicwall.com

