



The SonicWALL Network Security Appliance Series

NETWORK SECURITY

Next Generation Unified Threat Management Protection

- **SonicWALL's next generation security**
- **Scalable multi-core hardware and reassembly-free deep packet inspection**
- **Stateful high availability and load balancing features**
- **High performance and lowered TCO**
- **Advanced routing services and networking features**
- **Standards-based Voice over IP (VoIP)**
- **Secure distributed wireless LAN services**
- **Onboard Quality of Service (QoS)**

Organizations of all sizes depend on their networks to access internal and external mission-critical applications. As advances in networking continue to provide tremendous benefit to organizations, they are increasingly challenged by sophisticated and financially-motivated attacks designed to disrupt communication, degrade performance and compromise data.

Malicious attacks penetrate outdated stateful packet inspection firewalls by exploiting higher network levels. Point products add layers of security, but are costly, difficult to manage, limited in controlling network misuse and ineffective against the latest multipronged attacks. The SonicWALL® Network Security Appliance (NSA) Series revolutionizes network security, utilizing a breakthrough multi-core design and patented Reassembly-Free Deep Packet Inspection™ (RFDPI) technology* offering complete protection without compromising network performance. This platform was first made available on the SonicWALL E-Class NSA Series, and it is now available for mid-sized organizations.

The NSA Series overcomes the limitations of existing security solutions by scanning the entirety of each packet for current internal and external threats in real time. Built on a high-speed multi-core processing platform, the NSA Series enables deep packet inspection without adversely impacting the performance of mission-critical networks and applications.

The NSA Series applies next-generation Unified Threat Management (UTM) against a comprehensive array of attacks, combining intrusion prevention, anti-virus and anti-spyware with the application-level control of SonicWALL Application Firewall. With advanced routing, stateful high-availability and high-speed VPN technology, the NSA Series adds security, reliability, functionality and productivity to branch offices, central sites and distributed mid-enterprise networks, while minimizing cost and complexity.

Comprised of the **SonicWALL NSA 240, 2400, NSA 3500, NSA 4500 and NSA 5000**, the NSA Series offers a scalable range of solutions designed to meet the network security needs of any organization.

Features and Benefits

SonicWALL's next generation security incorporates a new level of UTM that integrates intrusion prevention, gateway anti-virus and anti-spyware and features the Application Firewall suite of configurable tools to prevent data leakage and offer granular application control.

Scalable multi-core hardware and reassembly-free deep packet inspection scans and eliminates threats of unlimited file sizes, and provides virtually unrestricted concurrent connections with uncompromising speed. The NSA 240 Series can be configured using primary or secondary modem or 3G wireless interfaces for future-proofed extensibility.

Stateful high availability and load balancing features in SonicOS 5.0 Enhanced maximize total network bandwidth and maintain seamless network uptime, delivering uninterrupted access to mission-critical resources, and ensuring that VPN tunnels and other network traffic will not be interrupted in the event of a failover.

High performance and lowered TCO are achieved by using the processing power of multiple cores in unison to dramatically increase throughput and provide simultaneous inspection capabilities, while lowering power consumption.

Advanced routing services and networking features incorporate advanced networking and security technology including 802.1q VLANs, WAN/WAN failover, zone and object-based management, load balancing, advanced NAT modes and more, providing granular configuration flexibility and comprehensive protection at the administrator's discretion.

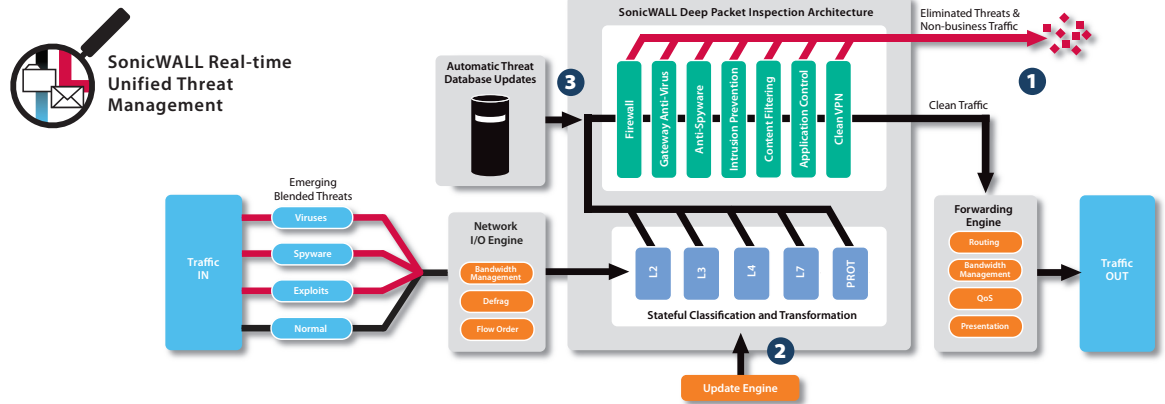
Standards-based Voice over IP (VoIP) capabilities provide the highest levels of security for every element of the VoIP infrastructure, from communications equipment to VoIP-ready devices such as SIP Proxies, H.323 Gatekeepers and Call Servers.

Secure distributed wireless LAN services enable the appliance to function as a secure wireless switch and controller that automatically detects and configures SonicPoints™ SonicWALL wireless access points, for secure remote access in distributed network environments.

Onboard Quality of Service (QoS) features use industry standard 802.1p and Differentiated Services Code Points (DSCP) Class of Service (CoS) designators to provide powerful and flexible bandwidth management that is vital for VoIP, multimedia content and business-critical applications.

*U.S. Patent 7,310,815-A method and apparatus for data stream analysis and blocking.





Best-in-Class Threat Protection

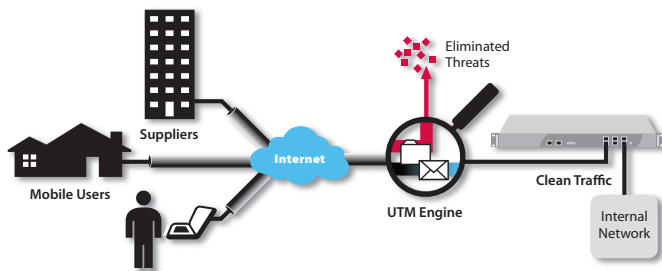
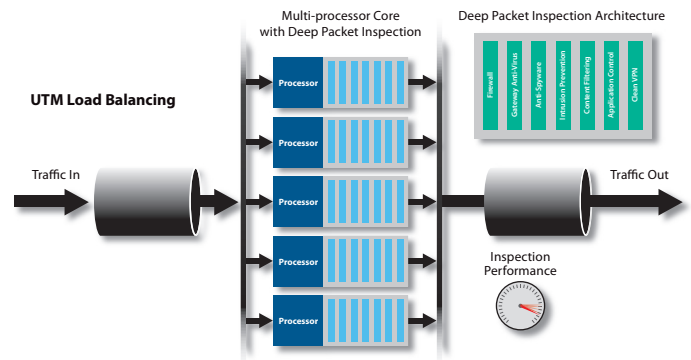
- 1 SonicWALL deep packet inspection protects against network risks such as viruses, worms, Trojans, spyware, phishing attacks, emerging threats and Internet misuse. Application Firewall adds highly-configurable controls to prevent data leakage and manage bandwidth at the application level.
- 2 The SonicWALL Reassembly-Free Deep Packet Inspection (RFDPI) technology utilizes SonicWALL's multi-core architecture to scan packets in real-time without stalling traffic in memory.

This functionality allows threats to be identified and eliminated over unlimited file sizes and unrestricted concurrent connections, without interruption.

- 3 The Network Security Appliance Series provides dynamic network protection through continuous, automated security updates, protecting against emerging and evolving threats, without requiring any administrator intervention.

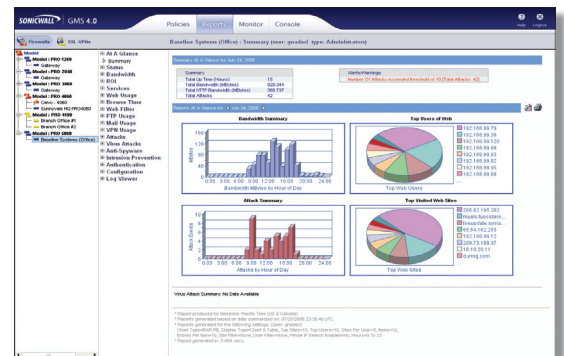
Unified Threat Management Load Balancing

Single processor designs that include multiple protection technologies are severely limited by a single centralized processor. SonicWALL UTM load balancing integrates a high-speed deep packet inspection and traffic classification engine onto multiple security cores inspecting applications, files and content-based traffic in real time without significantly impacting performance or scalability. This enables the scanning and control of threats for networks that carry bandwidth intensive and latency sensitive applications.



SonicWALL Clean VPN™

The Network Security Appliance Series includes innovative SonicWALL Clean VPN™ technology which decontaminates vulnerabilities and malicious code from remote mobile users and branch offices traffic before it enters the corporate network, and without user intervention.



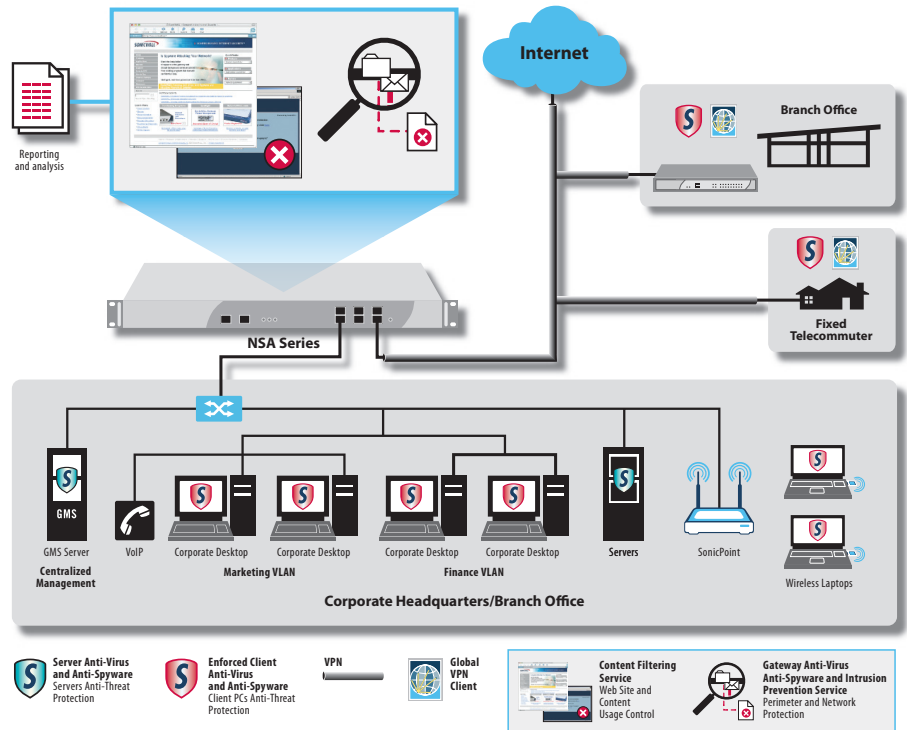
Centralized Policy Management

The Network Security Appliance Series can be managed using the SonicWALL Global Management System (GMS), which provides flexible, powerful and intuitive tools to centrally manage configurations, view real-time monitoring metrics and integrate policy and compliance reporting.

Flexible, Customizable Deployment Options – NSA Series At-A-Glance

Every SonicWALL Network Security Appliance solution delivers next generation Unified Threat Management protection, utilizing a breakthrough multi-core hardware design and Reassembly-Free Deep Packet Inspection for internal and external network protection without compromising network performance. Each NSA Series product combines high-speed intrusion prevention, file and content inspection, and powerful Application Firewall controls with an extensive array of advanced networking and flexible configuration features. The NSA Series offers an accessible, affordable platform that is easy to deploy and manage in a wide variety of corporate, branch office and distributed network environments.

- The SonicWALL **NSA 5000** sits at the top of the line, and is ideal for the most demanding campus and distributed network environments
- The SonicWALL **NSA 4500** is ideal for corporate central-site and large distributed environments requiring high throughput capacity and performance
- The SonicWALL **NSA 3500** is ideal for corporate, branch office and distributed environments needing significant throughput capacity and performance
- The SonicWALL **NSA 2400** is ideal for small-to-midsize corporate and branch office environments concerned about throughput capacity and performance
- The SonicWALL **NSA 240** is ideal for small-to-midsize businesses and branch office sites.



Key Features

Gateway Anti-Virus, Anti-Spyware, Intrusion

Prevention Service and Application Firewall delivers intelligent, real-time network security protection against sophisticated application layer and content-based attacks including viruses, spyware, worms, Trojans and software vulnerabilities such as buffer overflows. Application Firewall delivers a suite of configurable tools designed to prevent data leakage while providing granular application-level controls.



Enforced Client and Server Anti-Virus and Anti-Spyware

delivers comprehensive virus and spyware protection for laptops, desktops and servers using a single integrated client and offers automated network-wide enforcement of anti-virus and anti-spyware policies, definitions and software updates.



Content Filtering Service enforces protection and productivity policies by employing an innovative rating architecture, utilizing a dynamic database to block up to 56 categories of objectionable Web content.



ViewPoint Reporting

delivers easy-to-use, Web-based capabilities that provide administrators with instant comprehensive insight into network performance and security. Delivered through a series of historical reports using dashboards and detailed summaries, ViewPoint helps organizations of all sizes track Internet usage, fulfill regulatory compliance requirements and monitor the security status of their network.



Dynamic Support Services

are available 8x5 or 24x7 depending on customer needs. Features include world-class technical support, crucial firmware updates and upgrades, access to extensive electronic tools and timely hardware replacement to help organizations get the greatest return on their SonicWALL investment.



Specifications



Network Security Appliance 5000
01-SSC-7042
NSA 5000 TotalSecure (1-year)
01-SC-7031



Network Security Appliance 4500
01-SSC-7012
NSA 4500 TotalSecure (1-year)
01-SC-7032



Network Security Appliance 3500
01-SSC-7016
NSA 3500 TotalSecure (1-year)
01-SC-7033



Network Security Appliance 2400
01-SSC-7020
NSA 2400 TotalSecure (1-year)
01-SC-7035



Network Security Appliance 240
TotalSecure (1-year)
01-SSC-8760

Certifications



	NSA 240	NSA 2400	NSA 3500	NSA 4500	NSA 5000
Firewall					
SonicOS Version	SonicOS Enhanced 5.0 (or higher)				
Stateful Throughput*	600 Mbps	775 Mbps	1.5 Gbps	2.75 Gbps	3.5 Gbps
GAV Performance*	115 Mbps	160 Mbps	350 Mbps	690 Mbps	800 Mbps
IPS Performance*	195 Mbps	275 Mbps	750 Mbps	1.4 Gbps	1.7 Gbps
UTM Performance Throughput*	110 Mbps	150 Mbps	240 Mbps	600 Mbps	800 Mbps
IMIX Performance*	195 Mbps	235 Mbps	580 Mbps	700 Mbps	950 Mbps
Maximum Connections	25,000/35,000**	48,000	128,000	450,000	600,000
New Connections/Sec	2,000	4,000	7,000	10,000	12,000
Nodes Supported	Unrestricted				
Denial of Service Attack Prevention	22 classes of DoS, DDoS and scanning attacks				
SonicPoints Supported (Maximum)	16	32	32	64	64
VPN					
3DES/AES Throughput*	150 Mbps	300 Mbps	625 Mbps	1.0 Gbps	1.5 Gbps
Site-to-Site VPN Tunnels	25/50**	75	800	1,500	2,500
Bundled Global VPN Client Licenses for Remote Access (Maximum)	2 (25)	10 (250)	50 (1,000)	500 (3,000)	1,000 (3,500)
Encryption / Authentication	DES, 3DES, AES (128, 192, 256-bit), MD5, SHA-1				
Key Exchange	IKE, IKEv2, Manual Key, PKI (X.509)				
L2TP/IPSec	Yes				
Certificate Support	Verisign, Thawte, Cybertrust, RSA Keon, Entrust, and Microsoft CA for SonicWALL-to-SonicWALL VPN				
Dead Peer Detection	Yes				
DHCP Over VPN	Yes				
IPSec NAT Traversal	Yes, NAT_Tv00 and v03				
Redundant VPN Gateway	Yes				
Global VPN Client Platform Supported	Microsoft® Windows 2000, Windows XP, Microsoft® Vista 32-bit				
Deep Packet Inspection Security Services					
Deep Packet Inspection	Comprehensive signature database, Peer-to-peer and instant messaging control and signature updates through Distributed Enforcement Architecture				
Signature Service	Comprehensive signature database, Peer-to-peer and instant messaging control and signature updates through Distributed Enforcement Architecture				
Content Filtering Service (CFS) Premium Edition	HTTP URL, HTTPS IP, keyword and content scanning ActiveX, Java Applet, and cookie blocking				
Gateway-enforced Client Anti-Virus and Anti-Spyware	HTTP/S, SMTP, POP3, IMAP and FTP, Enforced McAfee™ Clients E-mail attachment blocking				
Application Firewall	Provides application level enforcement and bandwidth control, regulate Web traffic, e-mail, e-mail attaches and file transfers, scan and restrict documents and files for key words and phrases				
Networking					
IP Address Assignment	Static, (DHCP, PPPoE, L2TP and PPTP client), Internal DHCP server, DHCP relay				
NAT Modes	1:1, 1:many, many:1, many:many, flexible NAT (overlapping IPs), PAT, transparent mode				
VLAN Interfaces (802.1q)	10/25**	128	128	256	256
Routing	OSPF, RIPv1/v2, static routes, policy-based routing, Multicast				
QoS	Bandwidth priority, maximum bandwidth, guaranteed bandwidth, DSCP marking, 802.1p				
IPv6	IPv6 Ready				
Authentication	XAUTH/RADIUS, Active Directory, SSO, LDAP, internal user database				
User Database	100 users	250 users	500 users	1,000 users	1,500 users
VoIP	Full H.323v1-5, SIP, gatekeeper support, outbound bandwidth management, VoIP over WLAN, deep inspection security, full interoperability with most VoIP gateway and communications devices				
System					
Zone Security	Yes				
Schedules	Yes				
Object-based/Group-based Management	Yes				
DDNS	Yes				
Management and Monitoring	Web GUI (HTTP, HTTPS), Command Line (SSH, Console), SNMP v2: Global management with SonicWALL GMS				
Logging and Reporting	ViewPoint®, Local Log, Syslog				
High Availability	Optional Active/Passive with State Sync**	Optional Active/Passive with State Sync	Active/Passive with State Sync		
Load Balancing	Yes, (Outgoing with percent-based, round robin and spill-over); (Incoming with round robin, random distribution, sticky IP, block remap and symmetrical remap)				
Standards	TCP/IP, UDP, ICMP, HTTP, HTTPS, IPSec, ISAKMP/IKE, SNMP, DHCP, PPPoE, L2TP, PPTP, RADIUS				
Wireless Standards	802.11 a/b/g, WEP, WPA, TKIP, 802.1x, EAP-PEAP, EAP-TTLS				
Hardware					
Interfaces	(3) GE Gigabit Ports+ (6) 10/100, 2 USB Future Use, PC Card Slot (Optional 3G/Analog Modem), 1 Console Interface	(6) 10/100/1000 Copper Gigabit Ports, 1 Console Interface, 2 USB (Future Use)			
Memory (RAM)	256 MB	512 MB	512 MB	512 MB	1 GB
Flash Memory	32 MB Compact Flash	512 MB Compact Flash			
Power Supply	36W External	Single 180W ATX Power Supply			
Fans	No Fan	2 Fans			
Power Input	10-240V, 50-60Hz	100-240Vac, 60-50Hz			
Max Power Consumption	15W	42W	64W	66W	66W
Total Heat Dissipation	51.1BTU	144BTU	219BTU	225BTU	225BTU
Certifications	-				EAL4+, FIPS 140-2 Level 2
Certifications Pending	ICSA Firewall 4.1, Common Criteria EAL-4+, FIPS 140-2				1.0d ICSA Firewall 4.1
Form Factor and Dimensions	7.125 x 1.5 x 10.5 in/ 18.10 x 3.81 x 26.67 cm	1U rack-mountable/ 17 x 10.25 x 1.75 in/ 43.18 x 26 x 4.44 cm		1U rack-mountable/ 17 x 13.25 x 1.75 in/ 43.18 x 33.65 x 4.44 cm	
Weight	2.55Lb/1.16Kg	8.05 lbs/ 3.65 kg		11.30 lbs/ 5.14 kg	
WEEE Weight	3.15Lb/1.43kg	8.05 lbs/ 3.65 kg		11.30 lbs/ 5.14 kg	
Major Regulatory	FCC Class A, CES Class A, CE, G-Tick, VCCI, Compliance MIC, UL, cUL, TUV/GS, CB, NOM, RoHS, WEEE				
Environment	32-105° F, 0-40° C	40-105° F, 5-40° C			
MTBF	TBD	16.0 years	14.3 years	14.1 years	14.1 years
Humidity	0-95% non-condensing	10-90% non-condensing			

For more information on SonicWALL network security solutions, please visit www.sonicwall.com.

SonicWALL, Inc.

1143 Borregas Avenue
Sunnyvale CA 94089-1306

T +1 408.745.9600
F +1 408.745.9300

www.sonicwall.com

