



SonicWALL Secure Distributed Wireless Solution

SECURE WIRELESS

Fully Integrated Network Security for Wired and Wireless Networks

Whether you're adding wireless into an existing network or deploying a new wireless network from the ground up, security is your number one concern. SonicWALL® makes wireless networking secure, simple and affordable with the innovative SonicWALL Secure Distributed Wireless Solution—the first total security solution that integrates 802.11a/b/g wireless management and security enforcement into an enterprise-class firewall/VPN appliance.

The SonicWALL Secure Distributed Wireless Solution is built around our award-winning line of network security appliances in combination with SonicPoints to extend secure wireless coverage across the network.

Available in IEEE 802.11a/b/g and 802.11b/g options, SonicPoints are dependent access points that provide secure wireless LAN connectivity to users on the network. Utilizing the Virtual Access Point (VAP) feature, SonicPoints can broadcast up to 8 distinct SSIDs with dedicated authentication and privacy settings while sharing the same physical infrastructure.* SonicPoints require no pre-configuration, as they are centrally configured, managed and updated by any SonicWALL network security appliance.**

The TZ 170 or PRO Series appliance automatically detects and configures SonicPoints as they are added to the network while simultaneously enforcing security policies on all wired and wireless traffic. This eliminates the need for a separate wireless appliance at the network perimeter, providing airtight wireless mobility for employees, as well as secure Internet access for guests.

Features and Benefits

IEEE 802.11a/b/g and 802.11b/g options

Select the platform that best fits your needs: tri-mode 802.11a/b/g or dual-mode 802.11b/g with detachable antennas.

Secure wireless roaming

Maintain secure access to your complete wireless network from SonicPoint to SonicPoint.

Comprehensive wired and wireless security

Provide total security enforcement, central management and scalability for both your wired and wireless networks from a single security platform.

Low TCO

Avoid implementing and separately managing an expensive wireless-specific solution that runs in parallel to your wired network.

Granular security policy enforcement

Apply firewall rules to all wireless traffic and control all wireless client communication to any host on the network—wired or wireless.

Multiple SSID support

Supports up to 8 distinct SSIDs using virtual access points with dedicated authentication and privacy settings while sharing the same physical infrastructure.

Rogue access point detection

Detect rogue access points on both the 2.4 and 5 GHz spectrums simultaneously.

Integrated wireless guest services (WGS)

Easily provide wireless guest Internet access through the auto-generation of guest accounts without compromising the integrity of your network.

- IEEE 802.11a/b/g and 802.11b/g options
- Secure wireless roaming
- Comprehensive wired and wireless security
- Low TCO
- Granular security policy enforcement
- Multiple SSID support
- Rogue access point detection
- Integrated wireless guest services

*VAP is available on PRO 2040, PRO 3060, PRO 4060, PRO 4100 and PRO 5060 running SonicOS 3.5 or greater

** SonicWALL TZ 170 and PRO Series security appliances require SonicOS Enhanced 2.5 (SonicPoint) or 3.1 (SonicPoint G) for secure wireless LAN functionality



SonicWALL Security Appliance

- **Central management** – Conveniently manage and configure all SonicPoints from the management interface of the governing SonicWALL security appliance
- **Centralized security policies** – Enforce corporate security policies for both the wired and wireless network from a single management interface
- **Advanced wireless LAN features** – Deploy advanced WLAN features such as wireless intrusion detection, wireless firewalling, virtual access point (VAP), secure wireless roaming, and Wireless Guest Services (WGS) throughout the network
- **Integrated services** – Apply gateway anti-virus, anti-spyware, intrusion prevention, and content filtering to both your wired and wireless traffic

The innovative

SonicWALL

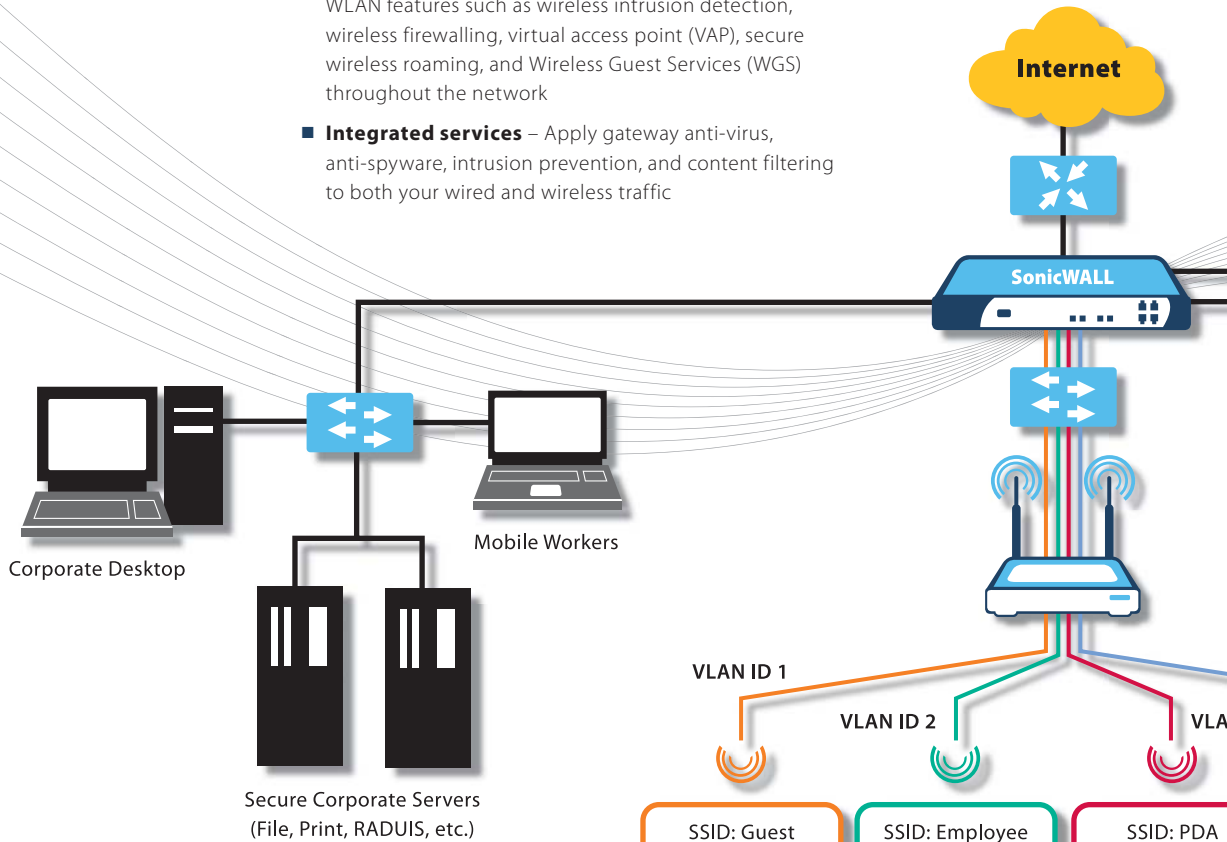
Secure Distributed

Wireless Solution

scales to virtually

any network

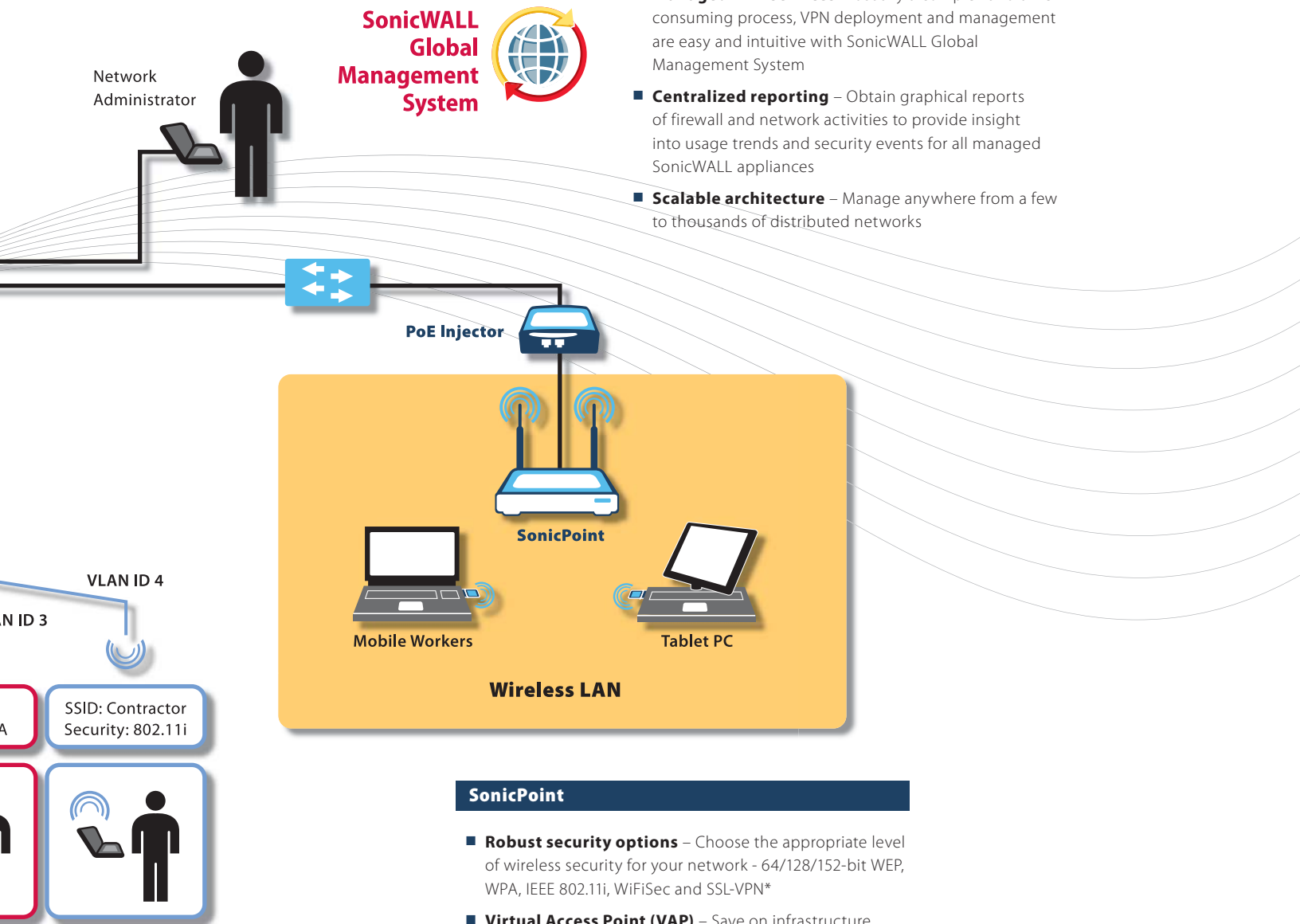
deployment



PoE Injector

- **PoE Injector Remote power feeding** – Reduce the cost of deploying a wireless network infrastructure by supplying power directly to the SonicPoint through a standard Ethernet cable
- **IEEE 802.3af compliant** – Deliver standards-based 802.3af Ethernet (PoE) automatically to SonicPoints or any 802.3af-compliant appliance
- **Ease-of-use** – Take advantage of the plug-and-play capability to enable rapid deployment of your wireless infrastructure
- **Advanced auto-sensing algorithm** – Utilize built-in intelligence to automatically determine and supply power to only those devices that can accept 802.3af power over the Ethernet connection
- **Interlocking** – Easily line up multiple PoE injectors by interlocking one to the next

Global Management System (GMS)



- **Global Management System (GMS) Centralized global management** – Reduce administration time, costs and complexity associated with establishing and maintaining corporate policies for your geographically distributed wired and wireless networks
- **Managed VPN services** – Usually a complex and time-consuming process, VPN deployment and management are easy and intuitive with SonicWALL Global Management System
- **Centralized reporting** – Obtain graphical reports of firewall and network activities to provide insight into usage trends and security events for all managed SonicWALL appliances
- **Scalable architecture** – Manage anywhere from a few to thousands of distributed networks

SonicPoint

- **Robust security options** – Choose the appropriate level of wireless security for your network - 64/128/152-bit WEP, WPA, IEEE 802.11i, WiFiSec and SSL-VPN*
- **Virtual Access Point (VAP)** – Save on infrastructure costs by broadcasting up to 8 distinct SSIDs with dedicated authentication and privacy settings while utilizing the same physical infrastructure
- **IEEE 802.11a/b/g and 802.11b/g options** – Select the platform that best fits your needs: tri-mode 802.11a/b/g or dual-mode 802.11b/g with detachable antennas
- **Automatically provisioned** – SonicPoints provide plug-and-play capabilities for automatic configuration and management from the SonicWALL gateway security appliance using pre-defined profiles
- **IEEE 802.3af Power over Ethernet (PoE) receive capability** – Add Power-over-Ethernet (PoE), allowing easy deployment—especially where electrical power is not readily accessible

* When used with SonicWALL SSL-VPN Series appliances

Specifications

SonicPoint

Hardware

Dimensions	9.07(L) x 6.63(W) x 1.63(H) in 23.03(L) x 16.84(W) x 4.14(H) cm
Weight	1.2 lbs 0.55 kg
Power	12 V
Antenna	2 dual band 5dBi omni-directional diversity antennas
802.11a/b/g	Fixed
802.11b/g	Detachable, TNC antenna interfaces
Status Indicators	
802.11a/b/g	6 LEDs: power, 802.11a, 802.11b/g, LAN (10/100/link)
802.11b/g	5 LEDs: power, 802.11b/g, LAN (10/100/link)
Wired Network Ports	1 10/100 auto-sensing RJ-45 port for Ethernet and Power over Ethernet (PoE) 1 serial console port
Mechanical	Wall or ceiling mount kit

Recommended Managed Units (Requires SonicOS Enhanced 2.5 or greater)

Security appliance	Per WLAN interface	Per appliance
TZ 170 Series	2 SonicPoints	2 SonicPoints
PRO 1260	2 SonicPoints	2 SonicPoints
PRO 2040	4 SonicPoints	8 SonicPoints
PRO 3060	8 SonicPoints	16 SonicPoints
PRO 4060	32 SonicPoints	32 SonicPoints
PRO 4100	64 SonicPoints	96 SonicPoints
PRO 5060	64 SonicPoints	128 SonicPoints

Standards

Compliance	802.11i, IPSec, IEEE 802.11a/b/g, 802.11d, 802.3af, WPA, TKIP, AES
Regulatory	
802.11a/b/g	FCC/ICES Class B, CE, C-Tick, VCCI Class B, BSMI Class B, MIC, NOM, CCC
802.11b/g	FCC/ICES Class B, CE, C-Tick, UL, cUL, TUV-GS, CB
Safety	UL, cUL, TUV-GS, CB

Environment

Temperature Range	32 to 104F, 0 to 40C
-------------------	----------------------

Radio Specifications

Frequency Band	
802.11a	5.15-5.25 GHz, 5.25-5.35 GHz, 5.725-5.825 GHz 5.25-5.35 GHz, 5.725-5.825 GHz (Taiwan) 5.725-5.825 GHz no Turbo (Korea)
802.11b/g	2.412 - 2.462 GHz (US, Canada, Taiwan) 2.412 - 2.484 GHz (Japan) 2.412 - 2.472 GHz (Europe ETSI) 2.457 - 2.462 GHz (Spain) 2.457 - 2.472 GHz (France)
Operating Channel	
802.11a	US & Canada: 12 channels (FCC) Europe: 11, Japan: 4, Singapore: 4, Taiwan: 4
802.11b/g	US & Canada: 1-11 channels (FCC) Europe: 1-13 (ETSI), Japan: 14, Spain: 2, France: 4
DFS	Dynamic frequency selection supported
Transmit Output	Power based on the regulatory domain specified by the system administrator
TPC	Transmit power control supported
Data Rates Supported	
802.11a	6, 9, 12, 18, 24, 36, 48, 54, 108 Mbps per channel
802.11b	1, 2, 5.5, 11 Mbps per channel
802.11g	6, 9, 12, 18, 24, 36, 48, 54, 108 Mbps per channel
Modulation Technology	
802.11a	Orthogonal Frequency Division Multiplexing (OFDM) BPSK, QPSK, 1-QAM, 64-QAM
802.11b	Direct Sequence Spread Spectrum (DSSS) CCK, BPSK, QPSK
802.11g	Orthogonal Frequency Division Multiplexing (OFDM) CCK, BPSK, QPSK, 16-QAM, 64-QAM

Security

Data Encryption	802.11i, IPSec, SSL-VPN*, WPA, 64/128/152-bit WEP
-----------------	---

Authenticators

RADIUS, Active Directory, Novell e-directory, SAMBA

* When used with SonicWALL SSL-VPN Series appliances

PoE Injector

Hardware

Dimensions	1.22(H) in x 2.36(W) in x 5.71(D) in 31(H) mm x 60(W) mm x 145(D) mm
Weight	1.0 lbs 450 g
Power over LAN Output	3.3V to 5.0V
Connectors	Shielded RJ-45, EIA 568A and 568B
Number of Ports	2: (1) Data In; (1) Data & Power Out
Status Indicators	
System Indicator	AC Power (Green)
User Indicator	Channel Power Active (Green)
Data Rates	10/100 Mbps

Power over LAN Output

Pin Assignment and Polarity	4/5 (+), 7/8 (-)
Output Power	-48 VDC

Voltage

User Port Power	15.4 W minimum
-----------------	----------------

Input Power Requirements

AC Input Voltage	90 to 264 VAC
AC Frequency	47 to 63 Hz
AC Input Current	0.5A at 100-240 VAC

Standards and Compliance

Regulatory Compliance	CE, RoHS, WEE
Electromagnetic Emission and Immunity	EN 55022, CISPR 22, FCC Part 15, (Class B with FTP cabling) EN 55024, CISPR 24
Safety Approvals	UL 60950-1, EN 60950, IEC 60950-1

Environmental Conditions

Temperature Range	32 to 104 °F, 0 to 40 °C
Operating Humidity	Maximum 90%, non-condensing

SonicWALL Value-added Security Services

SonicWALL network security appliances integrate seamlessly with an expanding array of value-added security services to provide a comprehensive security solution. Gateway anti-virus, anti-spyware, intrusion prevention, desktop-enforced anti-virus and content filtering can be enforced over both the wired and wireless LANs. For more information on SonicWALL security services, please visit our Web site at <http://www.sonicwall.com/products/vpnsoft.html>



SonicPoint (802.11a/b/g)

SonicPoint (N. America)
01-SSC-5522

SonicPoint 4-Pack Bundle (N. America)
01-SSC-5516

SonicPoint 8-Pack Bundle (N. America)
01-SSC-5519

SonicPoint G (802.11b/g)

SonicPoint G (N. America)
01-SSC-5536

SonicPoint G 4-Pack Bundle (N. America)
01-SSC-5512

SonicPoint G 8-Pack Bundle (N. America)
01-SSC-5533



PoE Injector

SonicWALL Power over Ethernet (PoE) Injector
01-SSC-5535

SonicWALL, Inc.

1143 Borregas Avenue
Sunnyvale CA 94089-1306

T +1 408.745.9600
F +1 408.745.9300

www.sonicwall.com

