



SonicWALL TZ Series

NETWORK SECURITY

Flexible, Multi-layered Security with Unified Threat Management

- **High-performance deep packet inspection firewall**
- **Real-time gateway anti-virus, anti-spyware and intrusion prevention**
- **Support for 3G and analog modem PC cards**
- **Automated WAN failover and failback**
- **Secure 802.11b/g wireless LAN**
- **Port level security**
- **Intuitive configuration wizards**
- **Global management and reporting**

The SonicWALL® TZ Series is the ultimate security platform for small and distributed networks, providing a choice between absolute ease-of-use for basic networks and unsurpassed flexibility for networks with more complex needs.

Malicious attacks can penetrate outdated stateful packet inspection firewalls. The TZ Series integrates a deep packet inspection firewall, 802.11b/g secure wireless, gateway anti-virus, anti-spyware, intrusion prevention, content filtering, failover/failback technologies and IPSec VPN capabilities into a cost-effective solution, and scales to protect your investment as your organization grows. Available in multiple hardware and node configurations including the **SonicWALL TZ 150, TZ 180 and TZ 190**, the TZ Series is ideal for small businesses, remote and branch offices and retail/point-of-sale deployments.

Securing networks against today's sophisticated attacks demands Unified Threat Management (UTM). Every TZ Series appliance is available as a SonicWALL® TotalSecure™ solution, a convenient and affordable solution that combines the hardware and all the services needed for comprehensive network protection from a wide range of network threats including viruses, spyware, worms, Trojans, keyloggers and other malicious threats. Together, these components form a UTM solution that delivers exceptional security to protect against emerging threats.

Features and Benefits

A configurable **high-performance deep packet inspection** firewall provides enterprise-class protection for key Internet services such as Web, e-mail, file transfer, Windows services and DNS.

Gateway anti-virus, anti-spyware and intrusion prevention provides real-time security against the latest viruses, spyware, software vulnerabilities and other malicious code.

The TZ 190 features a modular design that **supports 3G and analog modem PC cards** for use as either a primary or secondary WAN connection.

Integrated and **automated WAN failover and failback** ensures continuous uptime by failing over to an alternate WAN connection should the primary fail.

Secure 802.11b/g wireless LAN technologies provide WPA2 or IPSec secured high-speed wireless connectivity.

SonicWALL PortShield Architecture provides the flexibility to configure **port level security** for the LAN, providing protection between devices inside the LAN.

Intuitive configuration wizards simplify even the most complicated tasks, including VPN set-up, NAT configuration and public server configuration.

Award-winning **Global Management System (GMS)** provides comprehensive global management and reporting tools for simplified configuration, enforcement and management from a central location.

Consult the Key Features table for a list of features supported on each product.

TZ 150/TZ 150 Wireless

An entry level security platform delivering business-class protection to small offices in an easy-to-use, affordable solution.

TZ 180/TZ 180 Wireless

A high-performance network security platform that provides threat protection for home, small, remote and branch offices.

TZ 190/TZ 190 Wireless

A complete network security platform for small businesses, branch offices or portable networks that adds modular PC and WAN support.



Key Features




Features	TZ 150 Series	TZ 180 Series	TZ 190 Series
Interfaces	5 Ethernet	7 Ethernet	10 Ethernet
SonicOS Version	Standard	Standard	Enhanced
Upgradeable to SonicOS Enhanced	No	Yes	N/A
Site-to-Site VPN Tunnels Max	2	10 Node = 2 25 Node = 10	15
Bundled Global VPN Clients for Remote Access	0	10 Node = 0 25 Node = 1	2
Maximum Global VPN Clients	2	10 Node = 5 25 Node = 25	25
Deep Packet Inspection Firewall	S	S	S
Stateful Packet Inspection Firewall	S	S	S
Easy-to-Follow Configuration Wizards	S	S	S
Streamlined GUI	S	S	S
Wireless Firewalling	S	S	S
Wireless Intrusion Detection Services	S	S	S
Wireless Guest Services	S	S	S
Lightweight HotSpot Messaging	S	S	S
Inter-zone Scanning	S	S	S
Voice over IP (VoIP) Security	S	S	S
Manageable via SonicWALL's Award-winning Global Management System (GMS)	S	S	S
Optional 802.11b/g Wireless LAN	S	S	S
Advanced Wireless Security			
IPSec over WLAN	S	S	S
WPA	S	S	S
WPA2	-	S	S
Payment Card Industry (PCI) Compliance	S	S	S
PortShield Security	-	O	S
Integrated and Automated Failover and Failback	-	O	S
Object-based Management	-	O	S
Policy-based NAT	-	O	S
Load Balancing	-	O	S
SonicPoint Management	-	O	S
Configurable Optional Port	-	TZ 180 = S TZ 180 W = O	S
3G Wireless WAN PC Card Support*	-	-	S
Analog Modem PC Card Support*	-	-	S

S = Standard Feature O = Optional Upgrade - = Feature Not Available

*Card not included. See <http://www.sonicwall.com/us/tz190cards.html> for supported 3G PCMCIA Type II cards and analog modem PCMCIA cards.

SonicOS



SonicOS Standard allows rapid deployment in basic networks with a user-friendly Web interface and powerful configuration wizards. Building upon SonicOS Standard, SonicOS Enhanced is a sophisticated software upgrade that integrates a host of advanced features to meet the business continuity, configuration flexibility and management requirements of complex networks today and into the future.

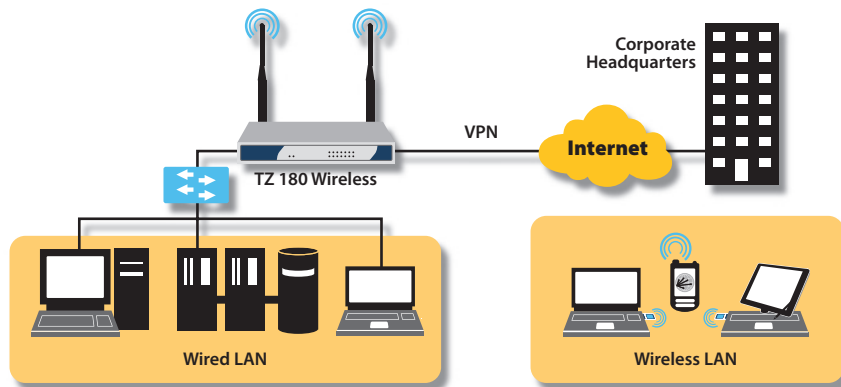
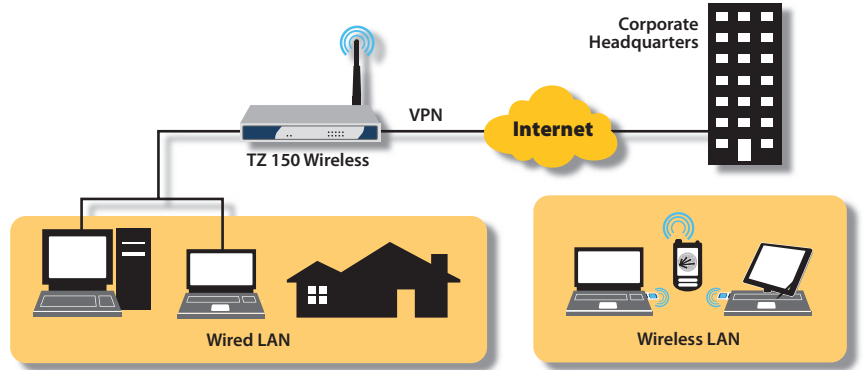
**SonicWALL's
TZ Series is the
ultimate security
platform for
small and
distributed
networks,
including remote
and branch
offices and
retail/POS
deployments**

Applications

SonicWALL TZ 150 Series

Ideal for home and small offices, the TZ 150 Series integrates a deep packet inspection firewall, IPSec 3DES/AES VPN and 802.11b/g secure wireless capabilities in an easy-to-use, low cost platform.

- Compact form factor includes a single Ethernet WAN port and four-port auto-MDIX LAN switch
- Supports gateway anti-virus, anti-spyware, intrusion prevention and content filtering for true layered security
- Designed to exceed the performance requirements of typical business DSL and cable broadband services



SonicWALL TZ 180 Series

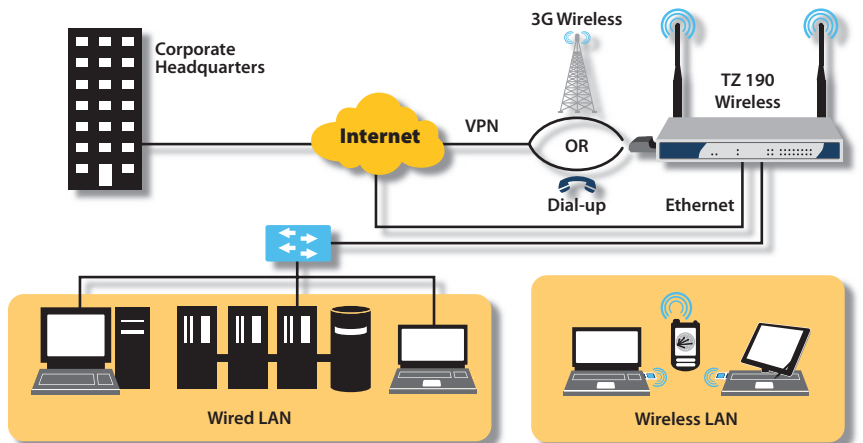
Designed as a complete Unified Threat Management (UTM) platform delivering business-class protection to small, remote and branch office networks, the TZ 180 Series features an integrated 5-port auto-sensing MDIX switch and configurable optional port.

- Exceptionally fast Unified Threat Management (UTM) performance on networks running gateway anti-virus, anti-spyware and intrusion prevention
- Integrated 802.11b/g wireless LAN with WPA2 support delivers increased security and flexibility as well as greater range for wireless users
- Inter-zone scanning combines with Unified Threat Management protection to eliminate threats no matter where they originate—inside or outside the network
- The TZ 180 delivers twice the UTM scanning speed as the TZ 170 and provides compelling new features such as a security dashboard for real-time threat monitoring and WPA2 support

SonicWALL TZ 190 Series

The flagship of the SonicWALL TZ Series, the TZ 190 is a high-performance security platform that integrates a Type II PC Card slot for WAN backup for small networks with mission-critical needs. The TZ 190 also includes automated failover/failback, a deep packet inspection firewall and optional 802.11b/g wireless LAN access. Building on the capabilities of the TZ 180 Series, the TZ 190 Series provides additional functionality including:

- Rapidly establish secure 3G wireless broadband network access in an instant without the need for a fixed Internet connection
- Adherence to PCI standards make this the ultimate solution for retail point-of-sale merchants and service providers who require secure transmission of customer information
- Modular design enables the use of a wide range of PC cards (3G, analog modem) for greater usage flexibility



Specifications

SonicWALL TZ Series



SonicWALL TZ 150
01-SSC-5810 (US/Canada)
SonicWALL TZ 150 Wireless
01-SSC-5815 (US/Canada)
SonicWALL TotalSecure 5 (TZ 150)
01-SSC-6080 (US/Canada)
SonicWALL TotalSecure 5 Wireless
(TZ 150 W) 01-SSC-6081 (US/Canada)



SonicWALL TZ 180
01-SSC-6550
SonicWALL TZ 180 Wireless
01-SSC-6551 (US/Canada)
SonicWALL TZ 180 TotalSecure 10
01-SSC-6097
SonicWALL TZ 180 Wireless
TotalSecure 10
01-SSC-6098 (US/Canada)
SonicWALL TZ 180 TotalSecure 25
01-SSC-6085
SonicWALL TZ 180 Wireless
TotalSecure 25
01-SSC-6086 (US/Canada)



SonicWALL TZ 190
01-SSC-6850
SonicWALL TZ 190 Wireless
01-SSC-6851 (US/Canada)
SonicWALL TotalSecure 3G
(TZ 190)
01-SSC-6087
SonicWALL TotalSecure 3G Wireless
(TZ 190 W)
01-SSC-6088 (US/Canada)

Features	TZ 150 Series	TZ 180 Series	TZ 190 Series
Nodes Supported	10	10/25	Unrestricted
Stateful Throughput*	30+ Mbps	90+ Mbps	90+ Mbps
Deep Packet Inspection Throughput	5 Mbps	10 Mbps	10 Mbps
Connections	2,000	6,000	6,000
Policies	20	100/250**	250
Denial of Service Attack Protection	22 classes of DoS, DDoS and scanning attacks		
VPN	TZ 150 Series	TZ 180 Series	TZ 190 Series
3DES/AES Throughput*	10+ Mbps	30+ Mbps	30+ Mbps
Encryption	DES, 3DES, AES (128, 142, 256-bit)		
Authentication	MD5, SHA-1		
Key Exchange	IKE, Manual Key, Certificates (X.509)		
XAUTH/RADIUS	Yes		
L2TP/IPSec	Yes		
Certificate Support	Yes		
Dead Peer Detection	Yes		
DHCP Over VPN	Yes		
IPSec NAT Traversal	Yes		
Redundant VPN Gateway	Yes		
Global VPN Client Platforms Supported	Microsoft® Windows 2000, Windows XP, Vista 32-bit		
Networking	TZ 150 Series	TZ 180 Series	TZ 190 Series
DHCP	Internal server, relay		
NAT Modes		1:1, 1:many, many:many, transparent mode	1:1, 1:many, many:1**, many:many, flexible NAT (overlapping IPs)**, PAT**, transparent mode
Policy-based Routing	–	Routing decisions based on combination of source IP, destination IP, service**	
Authentication	RADIUS, internal user database	RADIUS, Active Directory**, LDAP**, internal user database	
DDNS	Support for services offered by the following dynamic DNS providers: dyndns.org, yi.org, no-ip.com and changeip.com		
User Database	10	100/150**	150
VoIP	Full H.323v1-5, SIP, gatekeeper support, outbound bandwidth management, call tracking and monitoring		
System	TZ 150 Series	TZ 180 Series	TZ 190 Series
Zone Security	–	Yes**	Yes
Object-based Management	–	Yes**	Yes
PortShield Security**	–	5 security zones	8 security zones
Management and Monitoring	Local CLI, Web GUI (HTTP, HTTPS), SNMP v2; Global management with SonicWALL GMS		
Logging and Reporting	ViewPoint, Local Log and Syslog		
Load Balancing	–	Yes, with percent-based, round robin and spill-over**	
Built-in Wireless LAN	TZ 150 Series	TZ 180 Series	TZ 190 Series
Standards	802.11b/g, WEP, WPA, TKIP, PSK, 802.1x, EAP-PEP, EAP-TTLS	802.11b/g, WEP, WPA, WPA2, 802.11i, TKIP, PSK, 802.1x, EAP-PEAP, EAP-TTLS	
Antennas	Single, nondetachable external 2 dBi diversity	Dual, detachable, external 5 dBi diversity	
Radio Power 802.11b 802.11g		13 dBm maximum 20 dBm maximum @ 6~48 Mbps, 19dBm @ 54 Mbps	
Radio Receive Sensitivity 802.11b 802.11g		-89 dBm @ 11 Mbps -91 dBm @ 6 Mbps, -73 dBm @ 54 Mbps	
Hardware	TZ 150 Series	TZ 180 Series	TZ 190 Series
Memory	64 MB	128 MB	128 MB
Flash Memory	8 MB	16 MB	16 MB
Modem Dial-up	–	–	With Modem PC Card***
Power Input	100 to 240 VAC, 50-60 Hz, 1 A		
Max Power Consumption	8.4 W/9.9 W (TZ 150 W)	5.5 W/7.9 W (TZ 180 W)	12.7 W/15.1W (TZ 190 W)
Total Heat Dissipation	28.6 BTU/26.6 BTU (TZ 150 W)	26.0 BTU/34.0 BTU (TZ 180 W)	43.8 BTU/51.6 BTU (TZ 190 W)
Certifications (Pending)	ICSA Firewall 4.1, ICSA IPsec VPN 1.0d	ICSA Firewall 4.1, ICSA IPsec VPN 1.0d, FIPS 140-2, VPNC AES, Common Criteria EAL-2	
Dimensions	7.5 x 6.0 x 1.1 in (18.9 x 15.2 x 2.7 cm)	8.3 x 4.9 x 1.1 in (21.1 x 12.4 x 2.8 cm)	10.0 x 7.0 x 1.2 in (25.4 x 17.8 x 3.0 cm)
Weight	1.25 lbs/0.57 kg 1.30 lbs/0.59 kg (TZ 150 W)	1.40 lbs/0.64 kg 2.40 lbs/1.09 kg (TZ 180 W)	2.00 lbs/0.92 kg 2.20 lbs/1.00 kg (TZ 190 W)
Major Regulatory Compliance	FCC Class B, ICES Class B, CE, C-Tick, VCCI Class B, MIC, NOM, UL, cUL, TUV/GS, CB, WEEE, RoHS (TZ 180/190)		
Environment	40-105° F, 5-40° C		
MTBF	9.0 Years	8.5 Years	9.6 Years

*Testing Methodologies: Maximum performance based on RFC 2544 (for firewall). Actual performance may vary depending on network conditions and activated services. VPN throughput measured using UDP traffic at 1280 byte packet size adhering to RFC 2544. ** With SonicOS Enhanced. *** Modem card not included. See <http://www.sonicwall.com/us/tz190cards.html> for supported analog modem PCMCIA cards.

SonicWALL, Inc.

1143 Borregas Avenue
Sunnyvale CA 94089-1306

T +1 408.745.9600
F +1 408.745.9300

www.sonicwall.com

