



# The SonicWALL TZ 170 Series

TZ 170 SERIES

**Flexible and scalable layered security at a low total cost of ownership**

## Features and Benefits

- **Impenetrable wired and wireless security**
- **Powerful deep packet inspection firewall**
- **Comprehensive Intrusion Prevention Service**
- **Integrated 802.11b/g wireless**
- **Automated failover/failback**
- **Gateway-enforced anti-virus**
- **Flexible Content Filtering Service**

The SonicWALL® TZ 170 Series is the ideal total security platform for small networks including remote and branch offices and retail/POS deployments, providing organizations a choice between absolute ease-of-use for basic networks and unsurpassed flexibility for networks with more complex needs.

Integrating a stateful deep packet inspection firewall, 802.11b/g secure wireless, powerful intrusion prevention, failover/failback technologies, content filtering, gateway-enforced anti-virus, and IPSec VPN capabilities into a cost-effective solution, the TZ 170 Series scales to protect your investment as your organization grows. Available in multiple hardware and node configurations, including the **SonicWALL TZ 170**, **TZ 170 SP**, **TZ 170 Wireless** and **TZ 170 SP Wireless**, the **TZ 170 Series** allows you to add features and functionality when your network needs them.

## Features and Benefits

**Powerful deep packet inspection firewall** protects against worms, Trojans and malicious application layer attacks, originating from either internal or external sources\*

**Intrusion Prevention Service (IPS)** subscription provides dynamic signature updates to the integrated deep packet inspection engine for sophisticated layer 4-7 protection, as well as instant messaging and peer-to-peer management

**Integrated 802.11b/g wireless LAN** provides IPSec and WPA secured, high-speed wireless connectivity

**Integrated and automated failover and failback** technologies ensure continuous network uptime by automatically switching to a secondary WAN or to the integrated analog modem should the primary connection fail

**Gateway-enforced anti-virus** guarantees that all users on the network strictly adhere to the anti-virus policy while enforcing up-to-the-minute virus updates, providing networks comprehensive and immediate time to protection

**Content Filtering Service** optimizes workforce productivity and management of network resources

**Multiple hardware options and node configurations** Enable SonicWALL appliances to fit any network deployment from small businesses to major enterprises

**Intuitive configuration wizards** simplify even the most complicated tasks, including VPN set-up to public server configuration

\*Requires Intrusion Prevention Service subscription

### TZ 170

Powerful, proven network protection for smaller and distributed networks

### TZ 170 Wireless

802.11g secure wireless platform to set your business free

### TZ 170 SP

Integrated failover/failback for critical deployments, such as retail or healthcare

### TZ 170 SP Wireless

Trusted secure wireless and integrated failover/failback for the ultimate in reliable wire-free networking



**Key Features**

**Security**

- **Deep packet inspection firewall** plus SonicWALL's dynamically updated Intrusion Prevention Service guarantee protection against the latest threats
- **Advanced security services** provide multi-layer security, including intrusion prevention, anti-virus and content filtering

**Wireless\***

- **Wireless intrusion detection services** protect wireless networks from wireless security threats and rogue access points
- **Wireless firewalling** provides control over the communications between the appliance and connecting clients
- **Enforced IPSec encryption and WPA** on the WLAN offers the highest available security for wireless traffic
- **Wireless guest services** provide customers, partners and guests with wireless Internet-only access
- **Distributed WLAN support** creates seamless integration and management of SonicPoint™ satellite access points

**Business Continuity\*\***

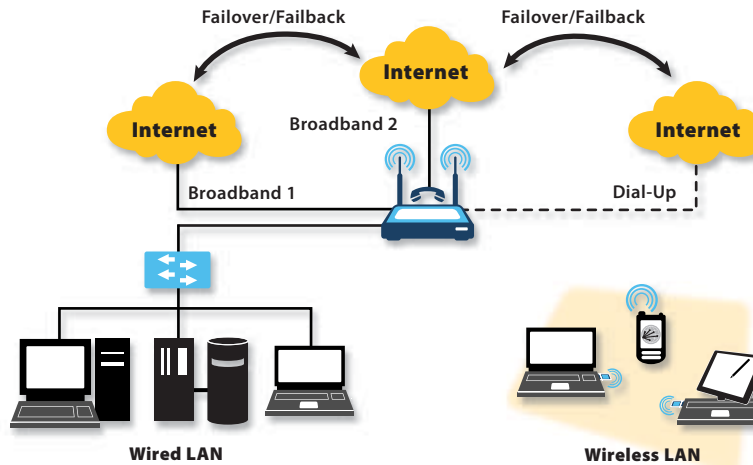
- **Integrated and automated failover and failback** technologies ensure continuous uptime for IPSec VPN tunnels while also providing the best connection speed possible
- **Broadband-to-broadband-to-analog WAN redundancy** provides unparalleled network uptime via multiple WAN redundancies
- **WAN/WAN failover and load balancing** offer round-robin, percent-based and spill-over load balancing

**General**

- **Integrated 5-port auto-MDIX switch** allows multiple computers to network together
- **System-on-a-chip technology** delivers 90Mbps of stateful packet inspection firewall and 30+Mbps 3DES and AES throughput
- **Optional port** can be configured as a second LAN, a second WAN, a DMZ or as a WLAN for maximum network configuration flexibility
- **Advanced NAT modes** create flexible site-to-site connectivity and management
- **Award-winning Global Management System (GMS)** enables comprehensive management and reporting

\*Available on Wireless models

\*\*Available on SP models



**SonicOS**

SonicOS Standard allows rapid deployment in basic networks with a user-friendly Web interface and powerful wizards. Building upon SonicOS Standard, SonicOS Enhanced is a sophisticated software upgrade that provides advanced features for more complex network installations.

Features	SonicOS Standard	SonicOS Enhanced
Streamlined GUI	■	■
Advanced Management Wizards	■	■
Scheduled & Prompted Dial-out	■	■
WAN ISP Failover		■
Object-based Management		■
Policy-based NAT		■
SonicPoint Management		■
Configurable Optional Port	As Workport (TZ 170 only)	As Workport, LAN, WAN, WLAN, DMZ (on all models)

*SonicWALL's  
TZ 170 Series  
is the ultimate  
total security  
platform  
for small  
networks,  
including  
remote and  
branch offices  
and  
retail/POS  
deployments*

# Specifications

Firewall	TZ 170 SP Wireless	TZ 170 SP	TZ 170 Wireless	TZ 170
Nodes Supported	10 (25 and Unrestricted by node upgrade)		10, 25 and Unrestricted	
Stateful Throughput	90Mbps <sup>†</sup>			
Deep Packet Inspection	Protection from worms, Trojans, and application layer attacks. Requires Intrusion Prevention Service for signature updates.			
Connections	6,000			
Policies	100 (SonicOS Standard)/250 (SonicOS Enhanced)			
Attack Protection	22 classes of DoS, DDoS and scanning attacks			
VPN	TZ 170 SP Wireless	TZ 170 SP	TZ 170 Wireless	TZ 170
3DES/AES Throughput	30+Mbps <sup>†</sup>			
Site-to-Site VPN Tunnels	10 Node: 2 25 Node: 10 Unrestricted Node: 10			
Bundled Global VPN Client Licenses for Remote Access	Optional			10 Node: Optional 25 Node: 1 Unrestricted Node: 1
Encryption	DES, 3DES, AES (128, 192, 256-bit)			
Authentication	MD5, SHA-1			
Key Exchange	Manual Key, PKI (X.509), IKE			
XAUTH/RADIUS	Yes			
L2TP/IPSec	Yes			
Flexible VPN Termination	Any port for site-to-site and remote access tunnels			
Certificate Support	Verisign, Thawte, Baltimore, RSA Keon, Entrust, and Microsoft CA for SonicWALL-to-SonicWALL VPN			
Dead Peer Detection	Yes			
DHCP Over VPN	Yes			
IPSec NAT Traversal	Yes, NAT_Tv00 and v03			
Redundant VPN Gateway	Yes			
Single-arm VPN	N/A	Yes (Not available on SonicOS Enhanced)		
Deep Inspection Security Services	TZ 170 SP Wireless	TZ 170 SP	TZ 170 Wireless	TZ 170
Intrusion Prevention Service (IPS)	1,800+ signature database Peer-to-peer and instant messaging control and signature updates through Distributed Enforcement Architecture <sup>1</sup>			
Content Filtering Service (CFS) Standard Edition	URL, keyword and content scanning ActiveX, Java Applet, and cookie blocking <sup>2</sup>			
Gateway-enforced Network Anti-Virus	(SMTP, POP3) Enforced McAfee™ Clients <sup>3</sup> E-mail attachment blocking			
Bundled Features	90 days 8x5/international support, Global VPN Clients and services as described above			
Networking	TZ 170 SP Wireless	TZ 170 SP	TZ 170 Wireless	TZ 170
DHCP	Relay, internal server			
NAT Modes	1:1, 1:many, many:1 <sup>††</sup> , many:many, flexible NAT (overlapping IPs) <sup>††</sup> , PAT <sup>††</sup> , transparent mode			
Policy-based Routing	Routing decisions based on combinations of Source IP, Destination IP and IP Service <sup>††</sup>			
Multicast	Secure multicast forwarding with full IGMPv1, v2, v3 support <sup>††</sup>			
Authentication	RADIUS, X.509, internal user database			
User Database	100 (SonicOS Standard)/150 (SonicOS Enhanced)			
VoIP	Full H.323v1-4, SIP, gatekeeper support, inbound/outbound bandwidth management, call tracking and monitoring, full vendor interoperability			
System	TZ 170 SP Wireless	TZ 170 SP	TZ 170 Wireless	TZ 170
Zone Security	Yes <sup>††</sup>			
Object-based Management	Yes <sup>††</sup>			
Management and Monitoring	Local CLI, Web GUI (HTTP, HTTPS), SNMP v2; Global management with SonicWALL GMS			
Logging and Reporting	ViewPoint, Local Log, Syslog, WebTrends			
Failover/Failback				
WAN/WAN/Analog	Yes	Yes <sup>††</sup>	N/A	N/A
WAN/WAN	Yes	Yes <sup>††</sup>	Yes <sup>††</sup>	Yes <sup>††</sup>
WAN/Analog	Yes	Yes	N/A	N/A
Load Balancing	Yes, with percent-based, round robin and spill-over <sup>††</sup>			
Standards	TCP/IP, UDP, ICMP, HTTP, HTTPS, IPSec, ISAKMP/IKE, SNMP, DHCP, PPPoE, L2TP, PPTP, RADIUS			
Wireless Standards	802.11b/g, WEP, WPA, TKIP, 802.1x, EAP-PEAP, EAP-TTLS	–	802.11b/g, WEP, WPA, TKIP, 802.1x, EAP-PEAP, EAP-TTLS	–

## SonicWALL TZ 170

TZ 170 10 Node (US/Canada) 01-SSC-5555

TZ 170 10 Node 8x5 Support Bundle (US/Canada) 01-SSC-5549

TZ 170 10 Node Comprehensive Gateway Security Bundle (US/Canada) 01-SSC-5820

TZ 170 25 Node (US/Canada) 01-SSC-5558

TZ 170 25 Node 8x5 Support Bundle (US/Canada) 01-SSC-5551

TZ 170 25 Node Comprehensive Gateway Security Bundle (US/Canada) 01-SSC-5821

TZ 170 Unrestricted Node (US/Canada) 01-SSC-5561

TZ 170 Unrestricted Node 8x5 Support Bundle (US/Canada) 01-SSC-5553

TZ 170 Unrestricted Node Comprehensive Gateway Security Bundle (US/Canada) 01-SSC-5822

**NOTE:**  
Comprehensive Gateway Security Bundles include 1 year of 8x5 support, Content Filtering Service, and Intrusion Prevention Service as well as ViewPoint reporting software.

## SonicWALL TZ 170 SP

TZ 170 SP 10 Node (US/Canada) 01-SSC-5730

# Specifications

Hardware	TZ 170 SP Wireless	TZ 170 SP	TZ 170 Wireless	TZ 170
<b>Interfaces</b>	(7) 10/100 Ethernet (WAN, 5-port LAN switch, optional port)			
<b>Power over Ethernet (802.3af)</b>	Yes	-	Yes	-
<b>Processor</b>	SonicWALL Security Processor			
<b>Memory (RAM)</b>	64MB			
<b>Flash Memory</b>	8MB			
<b>Integrated Modem</b>	v.92 Analog Modem			-
<b>Antennas</b>	Dual, External 5 dBi Diversity	-	Dual, External 5 dBi Diversity	-
<b>Radio Power</b> Note: Power output of the radio will change to comply with local regulatory authority limitations	802.11b Up to 21 dBm/125 mW Max 802.11g Up to 19 dBm/79 mW Max	-	802.11b Up to 21 dBm/125 mW Max 802.11g Up to 19 dBm/79 mW Max	-
<b>Channels (TZ 170 SP Wireless and TZ 170 Wireless only)</b>	Channels 1-11 (2.412 - 2.462 GHz) US, Canada, Taiwan Channels 1-13 (2.412 - 2.472 GHz) EU, Korea Channels 1-14 (2.412 - 2.484 GHz) Japan			
<b>Radio Receive Sensitivity</b>	(-86,-78,-70,-68) dBm at multiple (6, 24, 48, 54)Mbps	-	(-86,-78,-70,-68) dBm at multiple (6, 24, 48, 54)Mbps	-
<b>Power Supply</b>	180 W			
<b>Power Input</b>	100 to 240 VAC, 60-50 Hz, 6 A			
<b>Max Power Consumption</b>	11.0 W	8.5 W	10.5 W	8.5 W
<b>Total Heat Dissipation</b>	37.5 BTU	29.0 BTU	35.8 BTU	27.3 BTU
<b>Certifications (Pending)</b>	ICSA Firewall 4.0, ICSA IPSec VPN 1.0d, EAL-2 and FIPS 140-2			
<b>Dimensions</b>	9.07 x 6.63 x 1.63 in 23.03 x 16.84 x 4.14 cm			
<b>Weight</b>	1.40 lbs 0.64 kg	1.15 lbs 0.52 kg	1.40 lbs 0.64 kg	1.15 lbs 0.52 kg
<b>Major Regulatory Compliance</b>	EMI: FCC Class B, ICES Class B, CE, C-Tick, VCCI, BSMI MIC Safety: UL, cUL, TUV/GS, CB, NOM			
<b>Environment</b>	40-105° F, 5-40° C Humidity 10-90% non-condensing			

\*Testing Methodologies: Maximum performance based on RFC 2544 at 1518 byte packet for stateful throughput and 1460 byte packet for 3DES/AES throughput

\*\*Requires SonicOS Enhanced 2.5 or greater 1) 30-day service included 2) 30-day service included 3) 30-day 10-user service included

## SonicWALL TZ 170 Wireless

TZ 170 Wireless 10 Node  
(US/Canada)  
01-SSC-5710

TZ 170 Wireless 25 Node  
(US/Canada)  
01-SSC-5712

TZ 170 Wireless Unrestricted Node  
(US/Canada)  
01-SSC-5714

## SonicWALL TZ 170 SP Wireless

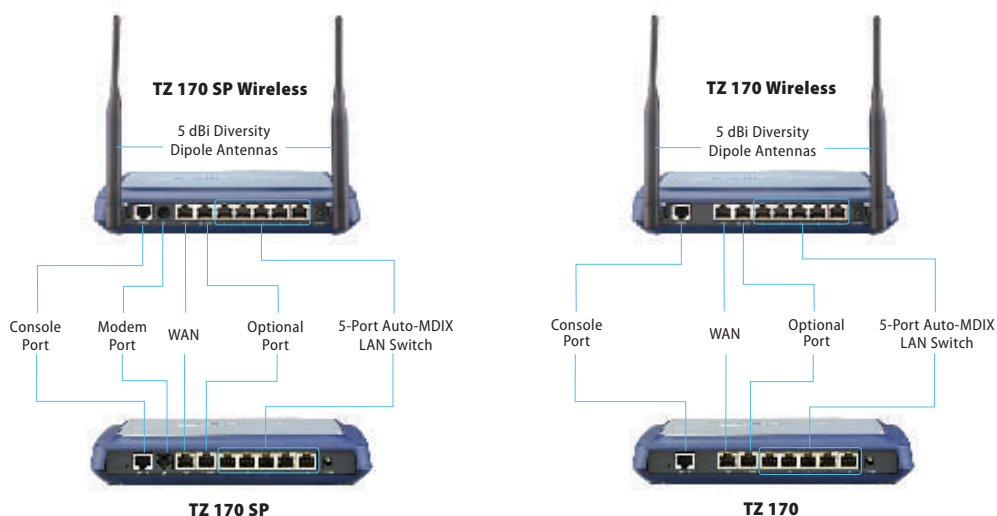
TZ 170 SP Wireless 10 Node  
(US/Canada)  
01-SSC-5740

## SonicWALL Value-added Security Services

SonicWALL Internet security appliances integrate seamlessly with an expanding array of value-added security services to provide a comprehensive security solution. Enforced anti-virus, content filtering, and intrusion prevention can be deployed over both the wired and wireless LANs.

For more information on SonicWALL security services, including intrusion prevention, enforced anti-virus and content filtering, please visit our Web site at

<http://www.sonicwall.com/products/vpnsoft.html>



## SonicWALL, Inc.

1143 Borregas Avenue  
Sunnyvale CA 94089-1306

T +1 408.745.9600  
F +1 408.745.9300

[www.sonicwall.com](http://www.sonicwall.com)

