

SUPER  [®]

SUPER  [®] P4SCA
SUPER  [®] P4SCE

USER'S MANUAL

Revision 2.0a

The information in this User's Manual has been carefully reviewed and is believed to be accurate. The vendor assumes no responsibility for any inaccuracies that may be contained in this document, makes no commitment to update or to keep current the information in this manual, or to notify any person or organization of the updates. **Please Note: For the most up-to-date version of this manual, please see our web site at www.supermicro.com.**

SUPER MICRO COMPUTER reserves the right to make changes to the product described in this manual at any time and without notice. This product, including software, if any, and documentation may not, in whole or in part, be copied, photocopied, reproduced, translated or reduced to any medium or machine without prior written consent.

IN NO EVENT WILL SUPER MICRO COMPUTER BE LIABLE FOR DIRECT, INDIRECT, SPECIAL, INCIDENTAL, OR CONSEQUENTIAL DAMAGES ARISING FROM THE USE OR INABILITY TO USE THIS PRODUCT OR DOCUMENTATION, EVEN IF ADVISED OF THE POSSIBILITY OF SUCH DAMAGES. IN PARTICULAR, SUPER MICRO COMPUTER SHALL NOT HAVE LIABILITY FOR ANY HARDWARE, SOFTWARE, OR DATA STORED OR USED WITH THE PRODUCT, INCLUDING THE COSTS OF REPAIRING, REPLACING, INTEGRATING, INSTALLING OR RECOVERING SUCH HARDWARE, SOFTWARE, OR DATA.

Any disputes arising between manufacturer and customer shall be governed by the laws of Santa Clara County in the State of California, USA. The State of California, County of Santa Clara shall be the exclusive venue for the resolution of any such disputes. Super Micro's total liability for all claims will not exceed the price paid for the hardware product.

*California Best Management Practices Regulations for Perchlorate Materials

This Perchlorate warning applies only to products containing CR (Manganese Dioxide) Lithium coin cells. "Perchlorate Material-special handling may apply. See WWW.dtsc.ca.gov/hazardouswaste/perchlorate".

FCC Statement: This equipment has been tested and found to comply with the limits for a Class A digital device pursuant to Part 15 of the FCC Rules. These limits are designed to provide reasonable protection against harmful interference when the equipment is operated in a commercial environment. This equipment generates, uses, and can radiate radio frequency energy and, if not installed and used in accordance with the manufacturer's instruction manual, may cause harmful interference with radio communications. Operation of this equipment in a residential area is likely to cause harmful interference, in which case you will be required to correct the interference at your own expense.

WARNING: Handling of lead solder materials used in this product may expose you to lead, a chemical known to the State of California to cause birth defects and other reproductive harm.

Revision Number: Rev. 2.0a

Release Date: Sept. 7, 2007

Unless you request and receive written permission from SUPER MICRO COMPUTER, you may not copy any part of this document.

Information in this document is subject to change without notice. Other products and companies referred to herein are trademarks or registered trademarks of their respective companies or mark holders.

Copyright © 2007 by SUPER MICRO COMPUTER INC.

All rights reserved.

Printed in the United States of America

Preface

About This Manual

This manual is written for system integrators, PC technicians and knowledgeable PC users. It provides information for the installation and use of the SUPER P4SCA/P4SCE motherboard. The P4SCA/P4SCE supports single Intel Pentium® 4 processors or Intel Celeron processors up to 3.06 GHz (with Hyper Threading) at a system bus speed of 800/533/400 MHz. (*see the note below). Pentium 4/ Celeron processors are housed in a 478-pin micro PGA (Plastic Grid Array) package. Please refer to the motherboard specifications pages on our web site (<http://www.supermicro.com/Products/motherboard>) for updates on supported processors. This product is intended to be professionally installed.

*Note: Please use the CPU that supports 0.13 Micron Manufacturing Technology.

Manual Organization

Chapter 1 includes a checklist of what should be included in your mainboard box, describes the features, specifications and performance of the P4SCA/P4SCE mainboard and provides detailed information about the chipset.

Chapter 2 begins with instructions on handling static-sensitive devices. Read this chapter when installing the processor and DDR memory modules and when mounting the mainboard in the chassis. Also refer to this chapter to connect the floppy and hard disk drives, the IDE interfaces, the parallel and serial ports, the mouse and keyboard and the twisted wires for the power supply, the reset button, the keylock/power LED and the speaker. It also details the installation of Intel ICH5R SATA RAID Utility and other software programs.

If you encounter any problems, see **Chapter 3**, which describes troubleshooting procedures for the video, the memory and the setup configuration stored in the CMOS. For quick reference, a general FAQ (Frequently Asked Questions) section is provided. Instructions are also included for contacting technical support. In addition, you can visit our web site at www.supermicro.com/products/motherboard/ for more detailed information.

Chapter 4 includes an introduction to BIOS and provides detailed information on running the CMOS Setup utility.

Appendix A provides BIOS POST Messages.

Appendix B lists BIOS POST Codes.

Appendix C Installing the Operating System and Software Programs.

Table of Contents

Preface

About this Manual	iii
Manual Organization	iii

Chapter 1: Introduction

1-1 Overview	1-1
Checklist	1-1
Contacting Super Micro	1-2
Super P4SCA Image	1-4
Super P4SCA Layout	1-5
Super P4SCE Image	1-6
Super P4SCE Layout	1-7
SUPER P4SCA/P4SCE Quick Reference	1-8
Canterwood Chipset: System Block Diagram	1-9
Motherboard Features	1-11
1-2 Chipset Overview	1-13
1-3 PC Health Monitoring	1-14
1-4 Power Configuration Settings	1-15
1-5 Power Supply	1-17
1-6 Super I/O	1-18

Chapter 2: Installation

2-1 Static-Sensitive Devices	2-1
2-2 Processor and Heatsink Installation	2-2
2-3 Mounting the Motherboard in the Chassis	2-4
2-4 Installing DDR Memory	2-4
2-5 I/O Port/Front Control Panel Connector Locations	2-6
2-6 Connecting Cables	2-7
Power Supply Connectors	2-7
IR Connector	2-7
PW_ON Connector	2-7
Reset Connector	2-8
IDE /SATA LED	2-8
Power_LED Connector	2-8
Speaker Connector	2-8
Serial Ports	2-9
Fan Headers	2-9
Chassis Intrusion	2-9

ATX PS/2 Keyboard/Mouse Ports	2-10
Universal Serial Bus (USB)	2-10
Wake-On-LAN	2-10
Wake-On-Ring	2-11
SATA LED	2-11
Keylock Enable/Disable	2-11
2-7 Jumper Settings	2-12
Explanation of Jumpers	2-12
CMOS Clear	2-12
USB Wake-Up	2-13
Watch Dog Enable/Disable	2-13
Front Side Bus Speed	2-13
Keyboard Wake-Up	2-14
LAN Enable/Disable	2-14
2-8 Parallel Port, Floppy/Hard Drive and AGP Connections	2-15
Parallel Port Connector	2-15
Floppy Connector	2-16
IDE Connectors	2-16
2-9 Installing Intel ICH5R SATA RAID Utility	2-17
2-10 Installing the Operating System and Software	2-24
SuperO Doctor II	2-29

Chapter 3: Troubleshooting

3-1 Troubleshooting Procedures	3-1
Before Power On	3-1
No Power	3-1
No Video	3-1
Memory Errors	3-2
Losing the System's Setup Configuration	3-2
3-2 Technical Support Procedures	3-2
3-3 Frequently Asked Questions	3-3
3-4 Returning Merchandise for Service	3-5

Chapter 4: BIOS

4-1 Introduction	4-1
4-2 Running Setup	4-2
4-3 Main BIOS Setup	4-2
4-4 Advanced BIOS Setup	4-5
4-4.1 Advanced BIOS Features	4-5
4-4.2 Advanced Chipset Control	4-7

4-4.3 I/O Device Configuration	4-8
4-4.4 PnP Configuration	4-11
4-4.5 Hardware Monitors	4-12
4-4.6 Processor & Clock Options	4-13
4-5 Security	4-14
4-6 Boot	4-15
4-7 Exit	4-17

Appendices:

Appendix A: BIOS POST Messages	A-1
Appendix B: BIOS POST Codes	B-1
Appendix C: Installing the Operating System and Software Programs	C-1

Chapter 1

Introduction

1-1 Overview

Checklist

Congratulations on purchasing your computer motherboard from an acknowledged leader in the industry. Super Micro boards are designed with the utmost attention to detail to provide you with the highest standards in quality and performance.

Please check that the following items have all been included with your motherboard. If anything listed here is damaged or missing, contact your retailer.

All Included in the Retail Box Only

One (1) Super Micro Mainboard

One (1) ATA 100/66 ribbon cable for IDE devices

Two (2) SATA cables

One (1) floppy drive ribbon cable

One (1) COM Port with Bracket

One (1) USB 4-port cable

One (1) I/O shield

One (1) CPU Retention Kit

One (1) Super Micro CD or diskettes containing drivers and utilities

One (1) User's/BIOS Manual

Contacting Super Micro

Headquarters

Address: Super Micro Computer, Inc.
980 Rock Ave.
San Jose, CA 95131 U.S.A.

Tel: +1 (408) 503-8000

Fax: +1 (408) 503-8008

Email: marketing@supermicro.com (General Information)
support@supermicro.com (Technical Support)

Web Site: www.supermicro.com

Europe

Address: Super Micro Computer B.V.
Het Sterrenbeeld 28, 5215 ML
's-Hertogenbosch, The Netherlands

Tel: +31 (0) 73-6400390

Fax: +31 (0) 73-6416525

Email: sales@supermicro.nl (General Information)
support@supermicro.nl (Technical Support)
rma@supermicro.nl (Customer Support)

Asia-Pacific

Address: Super Micro, Taiwan
4F, No. 232-1 Liancheng Road
Chung-Ho 235, Taipei Hsien, Taiwan, R.O.C.

Tel: +886-(2) 8226-3990

Fax: +886-(2) 8226-3991

Web Site: www.supermicro.com.tw

Technical Support:

Email: support@supermicro.com.tw

Tel: 886-2-8226-3990, ext.132 or 139

Notes

SUPER P4SCA

Figure 1-1. SUPER P4SCA Image

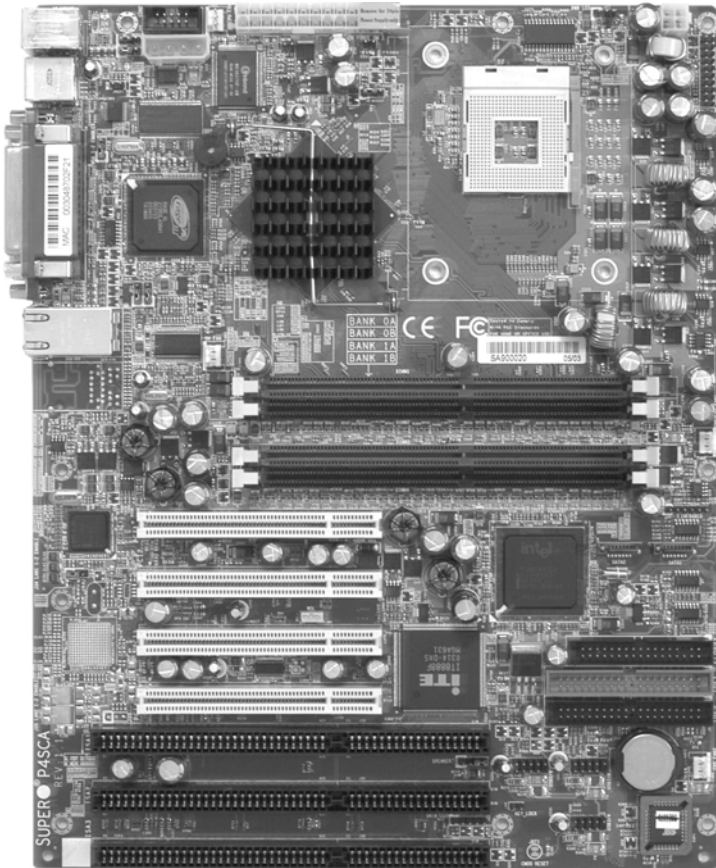
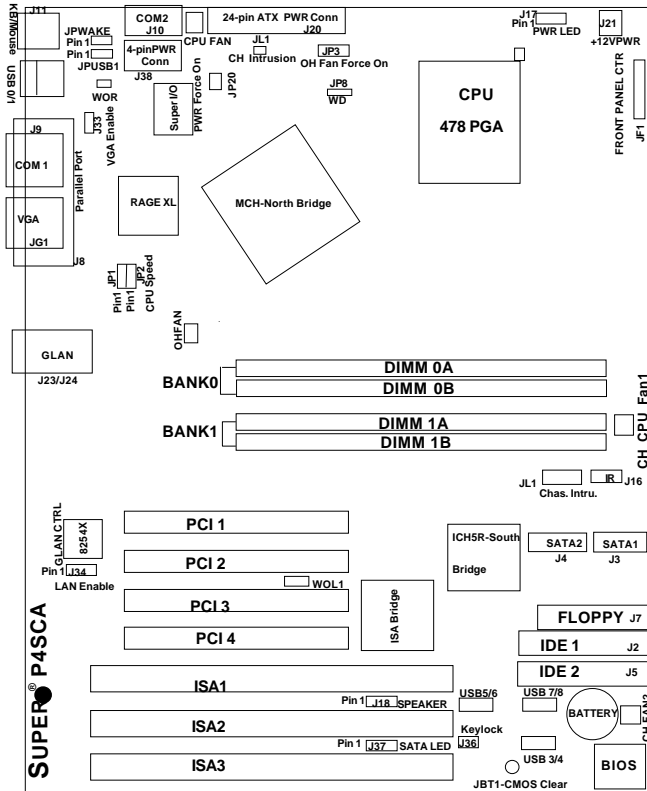


Figure 1-2. SUPER P4SCA Motherboard Layout
(not drawn to scale)



See Chapter 2 for detailed information on jumpers, I/O ports and JF1 front panel connections.

Jumpers not indicated are for test purposes only.

SUPER P4SCE

Figure 1-3. SUPER P4SCE Image

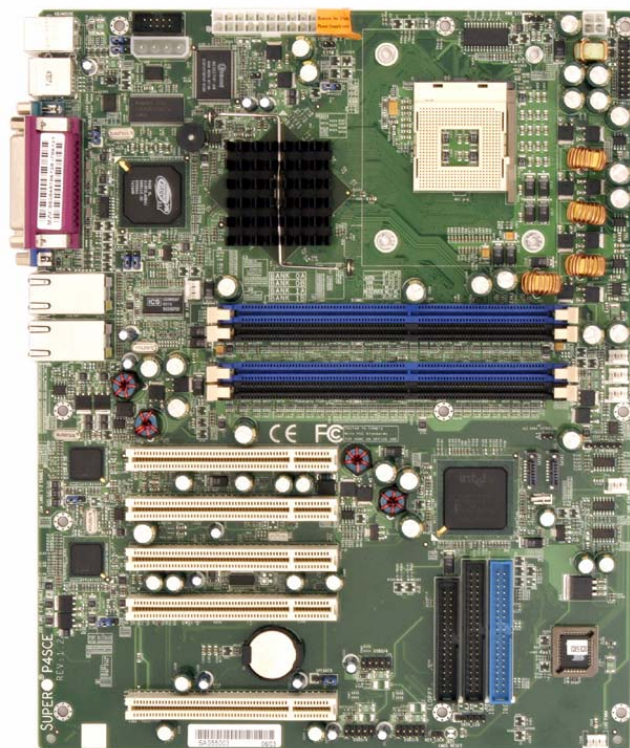
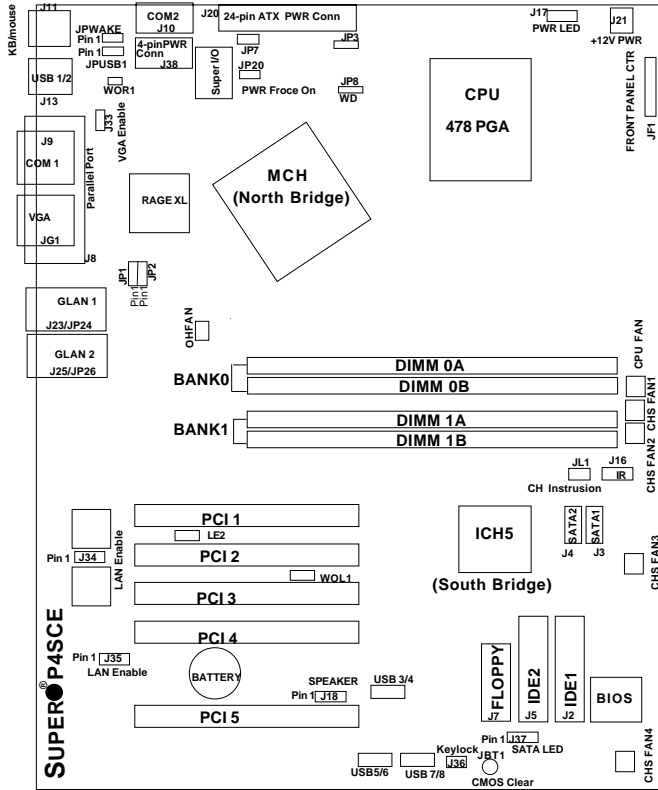


Figure 1-4. SUPER P4SCE Motherboard Layout



See Chapter 2 for detailed information on jumpers, I/O ports and JF1 front panel connections.

Jumpers not indicated are for test purposes only.

P4SCA/P4SCE Quick Reference

<u>Jumpers</u>	<u>Description</u>	<u>Default Setting</u>
J18	Speaker	Pins 3-4 (Internal Buzzer)
J33	VGA Enable/Disable	Pins 1-2 (Enabled)
J34/J35	GLAN1/GLAN2	Pins 1-2 (Enabled)
JBT1	CMOS Clear	See Section 2-7
JP1, JP2	CPU Clock Speed	Pins 1-2 (Auto)
JP3	OHFan Force On	Closed (On)
JP8	Watch Dog Reset	Pins 1-2 (WD Reset)
JP17	Power LED	Closed (On)
JP20	Power Force On	Open (Disabled)
JPUSB1	USB1/2 Wake Up	Pins 1-2 (Disabled)
JPWAKE	KB/Mouse PWO n Standby	Pins 1-2 (Disabled)

<u>Connectors</u>	<u>Description</u>
Chassis Fan1/2//3/4	CHS Fan Headers (*CHS Fan 3/4-P4SCE only. CHS Fan 3/4-Not monitored by BIOS)
CPU/OH FAN	CPU/Overhead Fan Headers
DIMM0A/0B/1A/1B	Memory (DIMM) Slots (1 through 4)
GLAN1/GLAN2	Gigabit LAN (Ethernet Ports)(*GLAN2-P4SCE)
J2, J5	IDE Ports (J2: IDE1, J5:IDE2)
J3, J4	Serial ATA Connectors (J3:SATA1, J4:SATA2)
J7	Floppy Disk Drive Connector
J8	Parallel Printer Port
J9,J10	COM1(J9), COM2(J10)
J11	Keyboard/Mouse Connector
J16	Infrared
J17	Power LED
J20	ATX Power Connector
J21	+12V Power Connector
J33	VGA Enable
J34, J35	LAN Enable (J34:LAN1, *J35: LAN-P4SCE)
J36	Keylock Header (*Open:Disabled-Default)
J37	Serial ATA LED (Pin1: SATA1, Pin2: SATA2)
J38	4-Pin Power Connector
JF1	Front Control Panel
JL1	Chassis Intrusion Header
LE2	Standby Power LED
USB 1/2	Universal Serial Ports 1/2
USB 3/4/5/6/7/8	Universal Serial Headers
WOL	Wake-On-LAN
WOR	Wake-On-Ring Header

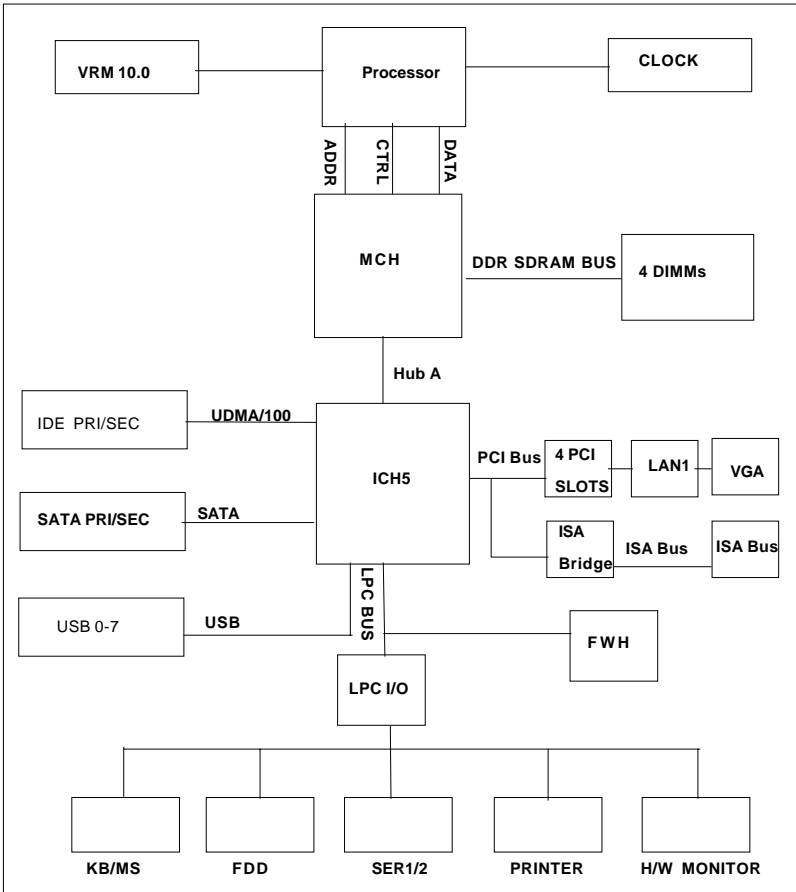


Figure 1-5.
P4SCA System Block Diagram: (with the E7210 Canterwood Chipset)

Note: This is a general block diagram and may not exactly represent the features on your motherboard. See the following pages for the actual specifications of each motherboard.

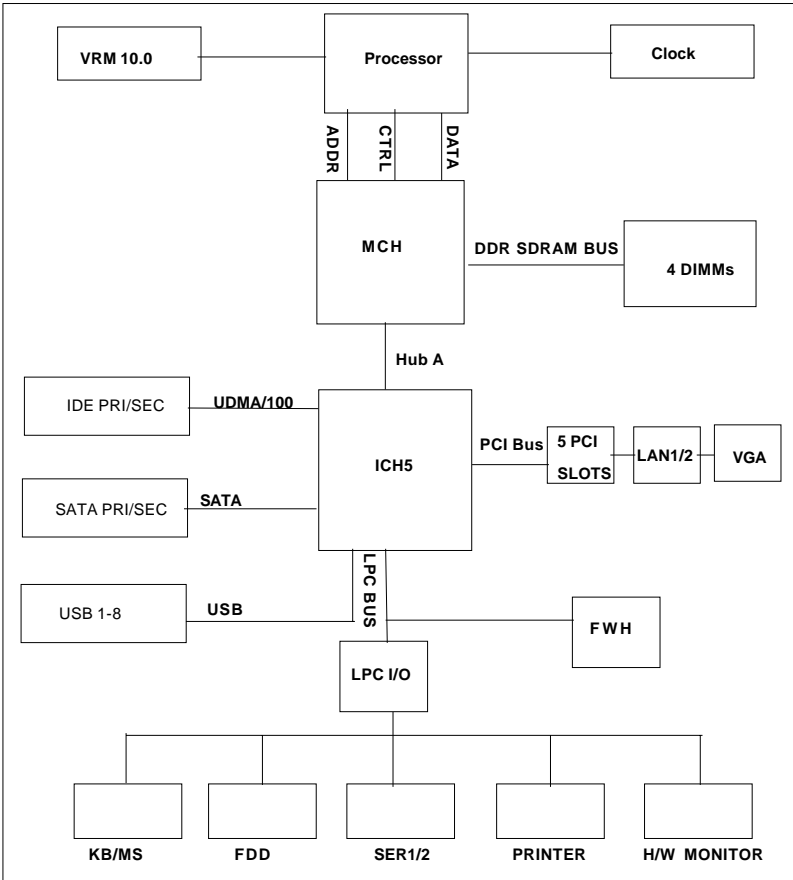


Figure 1-6.
P4SCE System Block Diagram: (with the E7210 Canterwood Chipset)

Note: This is a general block diagram and may not exactly represent the features on your motherboard. See the following pages for the actual specifications of each motherboard.

Motherboard Features

CPU ◆ *Latest CPU technology!*

- Single Pentium® 4 478-pin PGA processors or Intel Celeron processors up to up to 3.06 GHz (at a 800/533/400 MHz FSB) w/Hyper Threading.
- Intel Pentium 4/Celeron processors (*use 0.13 Micron Manufacturing Technology CPUs)

Note: Refer to the motherboard specifications pages on our web site (http://www.supermicro.com/Product_page/product-m.htm) for updates on supported processors.

Memory ◆ *Latest memory technology!*

- Dual Channel DDR up to 4 GB ECC, non-ECC, unbuffered DDR-400/333/266 SDRAM in 2 Banks 4 DIMMs (*For Dual-Channel operation, identical pair(s) of memory modules must be populated in DIMM0A, DIMM1A and/or DIMM0B, DIMM1B. The P4SCA/P4SCE supports up to 4 GB when all four DDR slots are populated with 1 GB modules. However, the OS may detect only up to 3.65 GB; the remaining memory is reserved for system BIOS use.)
- *Intel Performance Acceleration Technology!*

Chipset ◆ *Latest Intel chipset technology!*

- Intel E7210 Canterwood

Expansion Slots

(P4SCA)

- Four 32-bit, 33 MHz PCI slots (5V)
- Three ISA slots (5V)

(P4SCE)

- Five 32-bit, 33 MHz PCI slots (5V)

BIOS

- 4 Mb Firmware Hub AwardBIOS® Flash BIOS
- APM 1.2, DMI 2.3, PCI 2.3, ACPI 1.0, Plug and Play (PnP)

PC Health Monitoring

- Eight onboard voltage monitors for CPU core, +3.3V, +3.3V standby, +5V, +5V standby, Vbat (battery voltage) and ±12V
 - Fan status monitor with firmware/software on/off control
 - SuperDoctor II, Watch Dog, NMI, LDCM, LDSM (*optional)
 - Environmental temperature monitoring and control
 - Power-up mode control for recovery from AC power loss
 - System overheat LED and control
 - System resource alert
 - Hardware BIOS virus protection
 - Auto-switching voltage regulator for the CPU core
-

ACPI Features

- Slow blinking LED for suspend state indicator
- BIOS support for USB keyboard
- Main switch override mechanism
- Internal/external modem ring-on

Onboard I/O

- 2 ATA100/66 EIDE Channels for a total of 4 IDE devices backward compatible
- Intel ICH5R SATA Controller, 2 connectors for 2 devices
- 1 floppy port interface (up to 2.88 MB)
- 2 Fast UART 16550 compatible serial ports
- Intel 82541Gigabit Ethernet Controller (33 MHz)
- 1 EPP (Enhanced Parallel Port) and ECP (Extended Capabilities Port) supported parallel port
- PS/2 mouse and PS/2 keyboard ports
- Up to 8 USB (Universal Serial Bus) 2.0 ports for a speed of up to 480Mbps ◆ *Latest USB 2.0 technology!*
- 1 infrared port

Other

- Hyper-threading enabled
- Wake-on-LAN (WOL)
- Wake-on-Ring (WOR)
- Multiple CPU clock frequency ratio selections (set in BIOS)
- Suspend-to-RAM
- Onboard +5vsb warning LED ("LE2")
- CPU Thermal Trip support for Processor Protection

CD Utilities

- BIOS flash upgrade utility
- Drivers and software for Intel E7210 Canterwood chipset utilities

Dimensions

- ATX form factor, 12" x 9.5" (305 x 241.3 mm)

1-2 Chipset Overview (Intel's E7210 Canterwood Chipset)

The E7210 Canterwood Chipset contains the following main components: the E7210 Canterwood Memory Controller Hub (MCH) and the I/O Controller Hub 5(ICH5R). These two components are interconnected via Hub Interface.

Memory Controller Hub (MCH)

The E7210 Canterwood Memory Controller Hub (MCH) is designed to support Intel PGA 478-pin Processors. The function of the E7210 Canterwood MCH is to arbitrate the flow of data transfer between system bus (FSB), system memory, and Hub Interface. The Canterwood MCH supports 800 MHz FSB, 400/333 Memory Interface, 533 MHz FSB, 333/266 Memory Interface, and 400 MHz FSB 266 MHz Memory Interface.

System Memory Interface

The E7210 Canterwood Memory Controller (MCH) supports two 64-bit wide DDR data channels with bandwidth up to 6.4 GB/s (DDR400) in dual channel mode. It supports 128-Mb, 256-Mb, 512-Mb, x8, X16 DDR. Maximum system memory supports up to 4.0 GB for Dual-Channel. ECC/Non ECC unbuffered DDR DIMMs are supported, but it does not support registered, mixed-mode DIMMs.

Intel ICH5R System Features

The I/O Controller Hub provides the I/O subsystem with access to the rest of the system. It supports 2-channel Ultra ATA/100 Bus Master IDE Controller, two Serial ATA (SATA) Host Controllers, SMBus 2.0 Controller, LPC/Flash BIOS Interface, PCI 2.3 Interface, and Integrated System Management Controller.

1-3 PC Health Monitoring

This section describes the PC health monitoring features of the SUPER P4SCA/P4SCE. The motherboard has an onboard System Hardware Monitor chip that supports PC health monitoring.

Eight Onboard Voltage Monitors for the CPU Core, +3.3V, +3.3V standby, +5V, +5V standby, Vbat and $\pm 12V$

The onboard voltage monitor will scan these voltages continuously. Once a voltage becomes unstable, it will give a warning or send an error message to the screen, using Super Micro's Monitoring Software-Super O Doctor.

Fan Status Monitor with Firmware/Software On/Off Control

The PC health monitor can check the RPM status of the cooling fans. The onboard 3-pin fans are controlled by the power management functions.

Environmental Temperature Control

The P4SCA/P4SCE has a CPU "thermal trip" feature. A thermal control sensor monitors the CPU temperature in real time and will send a signal to shut down the system whenever the CPU temperature exceeds a certain threshold. This works to protect the CPU from being damaged by overheating.

CPU Overheat LED and Control

This feature is available when the user enables the CPU overheat warning function in the BIOS. This allows the user to define an overheat temperature. When this temperature is exceeded, the CPU thermal trip feature will activate and shut down the system.

Hardware BIOS Virus Protection

The system BIOS is protected by hardware so that no virus can infect the BIOS area. The user can only change the BIOS content through the flash utility provided by Super Micro. This feature can prevent viruses from infecting the BIOS area and destroying valuable data.

Auto-Switching Voltage Regulator for the CPU Core

The 3-phase-switching voltage regulator for the CPU core can support up to 60A current and auto-sense voltage IDs ranging from 1.1V to 1.85V. This will allow the regulator to run cooler and thus make the system more stable.

1-4 Power Configuration Settings

This section describes features of your motherboard that deal with power and power settings.

Slow Blinking LED for Suspend-State Indicator

When the CPU goes into a suspend state, the chassis power LED will start blinking to indicate that the CPU is in suspend mode. When the user presses any key, the CPU will wake-up and the LED will automatically stop blinking and remain on.

BIOS Support for USB Keyboard

If the USB keyboard is the only keyboard in the system, it keyboard will function like a normal keyboard during system boot-up.

Main Switch Override Mechanism

When an ATX power supply is used, the power button can function as a system suspend button. When the user presses the power button, the system will enter a SoftOff state. The monitor will be suspended and the hard drive will spin down. Pressing the power button again will cause the whole system to wake-up. During the SoftOff state, the ATX power supply provides power to keep the required circuitry in the system alive. In case the system malfunctions and you want to turn off the power, just press and hold the power button for 4 seconds. The power will turn off and no power will be provided to the motherboard.

Wake-On-Ring (WOR) Header

Wake-up events can be triggered by a device such as the external modem ringing when the system is in the SoftOff state. Note that external modem ring-on can only be used with an ATX 2.01 (or above) compliant power supply.

Wake-On-LAN (WOL)

Wake-On-LAN is defined as the ability of a management application to remotely power up a computer that is powered off. Remote PC setup, updates and asset tracking can occur after hours and on weekends so that daily LAN traffic is kept to a minimum and users are not interrupted. The motherboards have a 3-pin header (WOL) to connect to the 3-pin header on a Network Interface Card (NIC) that has WOL capability. Note that Wake-On-Lan can only be used with an ATX 2.01 (or above) compliant power supply.

1-5 Power Supply

As with all computer products, a stable power source is necessary for proper and reliable operation. It is even more important for processors that have high CPU clock rates of 1 GHz and faster.

The SUPER P4SCA/P4SCE accommodates 12V ATX power supplies. Although most power supplies generally meet the specifications required by the CPU, some are inadequate. Your power supply must supply 1 amp of 5V standby voltage.

It is strongly recommended that you use a high quality power supply that meets 12V ATX power supply Specification 1.1 or above. Additionally, in areas where noisy power transmission is present, you may choose to install a line filter to shield the computer from noise. It is recommended that you also install a power surge protector to help avoid problems caused by power surges.

It also provides two high-speed, 16550 compatible serial communication ports (UARTs), one of which supports serial infrared communication. Each UART includes a 16-byte send/receive FIFO, a programmable baud rate generator, complete modem control capability and a processor interrupt system. Both UARTs provide legacy speed with baud rate of up to 115.2 Kbps as well as an advanced speed with baud rates of 250 K, 500 K, or 1 Mb/s, which support higher speed modems.

The Super I/O provides functions that comply with ACPI (Advanced Configuration and Power Interface), which includes support of legacy and ACPI power management through a SMI or SCI function pin. It also features auto power management to reduce power consumption.

The IRQs, DMAs and I/O space resources of the Super I/O can be flexibly adjusted to meet ISA PnP requirements, which support ACPI and APM (Advanced Power Management).

1-6 Super I/O

The disk drive adapter functions of the Super I/O chip include a floppy disk drive controller that is compatible with industry standard 82077/765, a data separator, write pre-compensation circuitry, decode logic, data rate selection, a clock generator, drive interface control logic and interrupt and DMA logic. The wide range of functions integrated onto the Super I/O greatly reduces the number of components required for interfacing with floppy disk drives. The Super I/O supports four 360 K, 720 K, 1.2 M, 1.44 M or 2.88 M disk drives and data transfer rates of 250 Kb/s, 500 Kb/s or 1 Mb/s.

Chapter 2 Installation

2-1 Static-Sensitive Devices

Electric Static Discharge (ESD) can damage electronic components. To prevent damage to your system board, it is important to handle it very carefully. The following measures are generally sufficient to protect your equipment from ESD.

Precautions

- Use a grounded wrist strap designed to prevent static discharge.
- Touch a grounded metal object before removing the board from the anti-static bag.
- Handle the board by its edges only; do not touch its components, peripheral chips, memory modules or gold contacts.
- When handling chips or modules, avoid touching their pins.
- Put the motherboard and peripherals back into their antistatic bags when not in use.
- For grounding purposes, make sure your computer chassis provides excellent conductivity between the power supply, the case, the mounting fasteners and the motherboard.

Unpacking

The motherboard is shipped in antistatic packaging to avoid static damage. When unpacking the board, make sure the person handling it is static protected.

Installation Procedures

Follow the procedures as listed below for full installation of the motherboard into a chassis:

1. Install the processor and the heatsink to the motherboard.
2. Install the motherboard in the chassis.
3. Install the memory and add-on cards.
4. Finally, connect the cables and install the drivers.

2-2 Processor and Heatsink Fan Installation

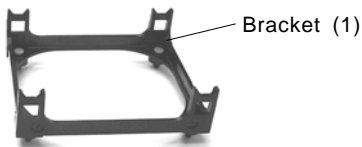


When handling the processor package, avoid placing direct pressure on the label area of the fan.

IMPORTANT: Always connect the power cord last and always remove it before adding, removing or changing any hardware components. Make sure that you install the processor into the CPU socket before you install the CPU heatsink.

Installation of the Processor and Heatsink

1. Locate the following components, which are included in the shipping package.

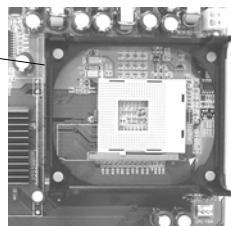


If you buy a boxed Intel Pentium 4 478 processor, it should include a heatsink, fan and retention mechanism. If you buy a processor separately, use only a Super Micro or Intel certified heatsink and fan.

2. Insert the white pegs into the black anchors. Do not force the white pegs all the way in - about 1/3 of the white pegs should be inside the black anchors. (These are for chassis that do not have four CPU retention holes.)



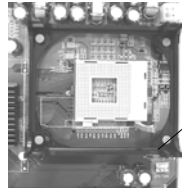
Bracket in position



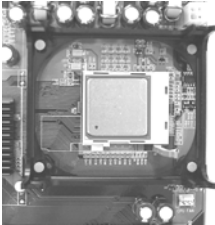
3. Place a retention bracket in the proper position and secure it by pressing two pegs into the retention holes until you hear a *click*. The clicking sound indicates that the peg is locked and secured.

4. Secure the other retention bracket into position by repeating Step 3.

5. Lift the lever on the CPU socket.

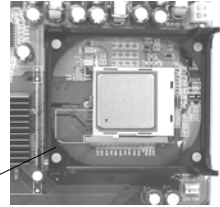


Socket Lever



6. Install the CPU in the socket. Make sure that Pin 1 of the CPU is seated on Pin 1 of the socket (both corners are marked with a triangle).

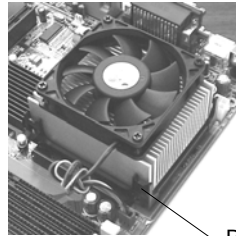
7. Press the lever down until you hear it *click* into the locked position.



Socket lever in locked position

8. Apply the proper amount of thermal compound to the CPU die.

9. Place the heatsink on top of the CPU and press firmly downward - do not twist or slide the heatsink to seat thermal compound.



Retainer clip attachment point

10. Secure the heat sink by locking the retention clips into their proper position.

11. Connect the CPU fan cable to the CPU Fan header on the motherboard.



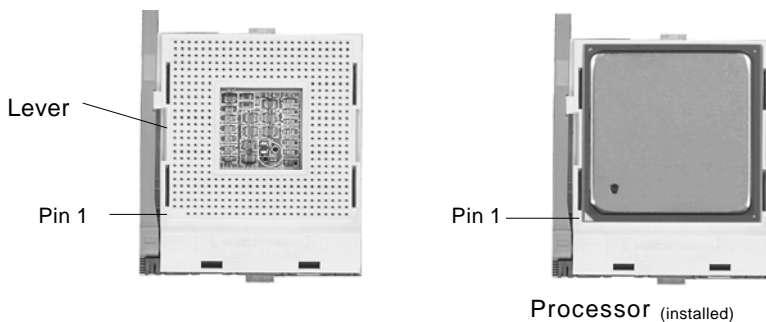


Figure 2-1. 478-pin mPGA Socket: Empty and with Processor Installed

2-3 Mounting the Motherboard in the Chassis

All motherboards have standard mounting holes to fit different types of chassis. Make sure that the locations of all the mounting holes for both the motherboard and the chassis match. Although a chassis may have both plastic and metal mounting fasteners, metal ones are highly recommended because they ground the motherboard to the chassis. Make sure that the metal standoffs click in or are screwed in tightly. Then, use a screwdriver to secure the motherboard onto the motherboard tray.

2-4 Installing DDR Memory

CAUTION

Exercise extreme care when installing or removing memory modules to prevent any possible damage.

Memory Module Installation (See Figure 2-2)

1. Insert each DDR memory module vertically into its slot. Pay attention to the notch along the bottom of the module to prevent inserting the module incorrectly. (See support information below.)
2. Gently press down on the memory module until it snaps into place.

Support

The P4SCA/P4SCE supports Dual channel, ECC/non-ECC, unbuffered DDR-400/333/266 DDR SDRAM. (Populate DIMM0A, DIMM1A and/or DIMM0B, DIMM1B with memory modules of the same size/same type will result in dual channel, two-way interleaved memory which is faster than single channel memory.) *The P4SCA/P4SCE supports up to 4 GB when all four DDR slots are populated with 1 GB modules. However, the OS may detect only up to 3.65 GB; the remaining memory is reserved for System BIOS use.)

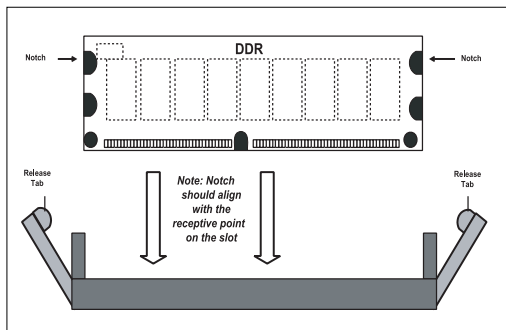
Memory Speeds			
Host Clock (MHz)	FSB (MHz)	DRAM DATA RATE (MT/s)	Shown during POST
100	400	266	DDR266
		333	DDR266
		400	DDR266
133	533	266	DDR266
		333	DDR333
		400	DDR333
200	800	266	DDR266
		333	DDR320 (*Note)
		400	DDR400

(*Note: The BIOS will display 320 due to the limitation of Intel's chipset).

Figure 2-2. Side and Top Views of DDR Module Installation into Slot

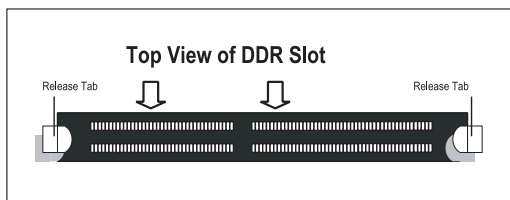
To Install:

Insert module vertically and press down until it snaps into place. Pay attention to the notch.



To Remove:

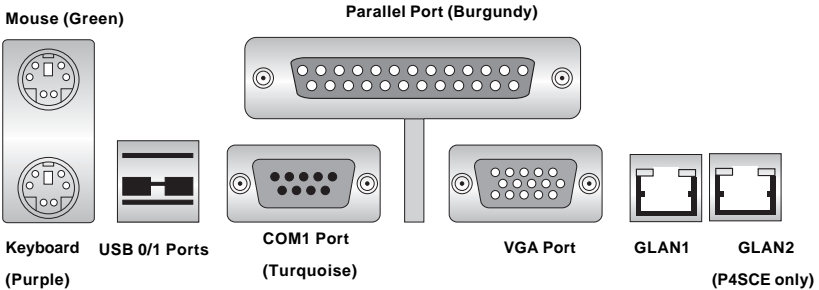
Use your thumbs gently to push each release tab outward to release the DIMM from the slot.



2-5 I/O Port/Control Panel Connector Locations

The I/O ports are color coded in conformance with the PC99 specification to make setting up your system easier. See Figure 2-3 below for the colors and locations of the various IO ports.

Figure 2-3. I/O Port Locations and Definitions



Front Control Panel

JF1 contains header pins for various front control panel connectors. See Figure 2-4 for the pin definitions of the various connectors including the speaker. Refer to Section 2-6 for details.

Figure 2-4. Front Control Panel Connectors

Pin 20: NMI	●	●	Pin 19: NMI
Pin 18: X	●	●	Pin 17: X
Pin 16: PW ON LED	●	●	Pin 15: PW ON LED
Pin 14: IDE/SATA LED	●	●	Pin 13: IDE LED
Pin 12: LAN1 LED	●	●	Pin 11: LAN1 LED
Pin 10: LAN2 LED	●	●	Pin 9: LAN2 LED
Pin 8: Ground	●	●	Pin 7: OH LED
Pin 6: X	●	●	Pin 5: X
Pin 4: Reset	●	●	Pin 3: Reset
Pin 2: PW ON	●	●	Pin 1: PW ON

2-6 Connecting Cables

Power Supply Connectors

The primary power supply connector (J20) on the P4SCA/P4SCE meets the SSI (Superset ATX) 24-pin specification. Refer to the table on the right for the pin definitions of the ATX 20-pin power connector. You must also connect the 4-pin (J21) processor power connector to your power supply. Refer to the table below right for the J21 (12V) connector. If J21 is not accessible, there is another 4-pin power connector (J38) available on the motherboard. J38 is located close to the ATX PWR Connector and next to the COM2 port. See the table on the right for the pin definition. (*You must use either J38 or J21 for CPU Power.)

IR Connector

The infrared connector is located at J16. See the table on the right for pin definitions. See the Technical Support section of our web page for information on the infrared devices you can connect to the system.

PW_ON Connector

The PW_ON connector is located on pins 1 and 2 of JF1.

ATX Power Supply 24-pin Connector
Pin Definitions (J20)

Pin Number	Definition	Pin Number	Definition
13	+3.3V	1	+3.3V
14	-12V	2	+3.3V
15	COM	3	COM
16	PS_ON#	4	+5V
17	COM	5	COM
18	COM	6	+5V
19	COM	7	COM
20	Res(NC)	8	PWR_OK
21	+5V	9	5VSB
22	+5V	10	+12V
23	+5V	11	+12V
24	COM	12	+3.3V

+12V 4-pin
Connector
(J21)

Required

Connection

Pins #	Definition
1 & 2	Ground
3 & 4	+12 V

+12V 4-pin
Connector
(J38)

Additional

Connection

Pins #	Definition
1	+12V
2 & 3	Ground
4	NC

(*Note: For CPU Power, you must use either J21 or J38)

Infrared Pin
Definitions
(J16)

Pin Number	Definition
1	+5V
2	CIRRX
3	IRRX
4	Ground
5	IRTX
6	NC

PW_ON
Pin Definitions
(JF1)

Pin Number	Definition
1	PW_ON
2	+3V

Reset Connector

The reset connector is located on pins 3 and 4 of JF1. This connector attaches to the reset switch on the computer chassis. See the table on the right for pin definitions.

**Reset Pin
Definitions
(JF1)**

Pin Number	Definition
3	Reset
4	Ground

*IDE/SATA LED (*See the note below)

The IDE/SATA LED is located on pins 13, 14 of JF1. This connects to the hard drive LED to display all IDE and SATA activities. See the table on the right for pin definitions.

IDE Pin Definition	
Pin#	Definition
13	IDE LED
14	IDE/SATA LED

(*Note: This LED is for all IDE and SATA devices)

Power_LED Connector

The Power LED connector is located on pins 15, 16 of JF1. (*Use J17 for a 3-pin connector.) This connection is used to provide LED indication of power being supplied to the system. See the table on the right for pin definitions.

J17

Pin Definitions

Pin Number	Definition
1	+5V
2	Key
3	Ground

Power_LED

Pin Definitions (JF1)

Pin Number	Definition
15	+5V
16	Ground

Speaker Connector

The speaker connector is located at J18. See the table on the right for pin definitions.

Speaker: Pin Definition	
Fuction	Pin Definition
Pins 1, 4	External Speaker
Pins 3, 4	Internal Speaker

Serial Ports

Two serial ports are included on the motherboard: COM1 is a port located beside the mouse/keyboard ports and COM2 is a header located on the motherboard near J20 (Power Connector). See the table on the right for pin definitions.

*NC indicates no connection.

**Serial Port Pin Definitions
(COM1, COM2)**

Pin Number	Definition	Pin Number	Definition
1	CD	6	DSR
2	RD	7	RTS
3	TD	8	CTS
4	DTR	9	RI
5	Ground	10	NC

Note: Pin 10 is included on the header but not on the port.

Fan Headers

There are four fan headers on the P4SCA, which are designated CPU Fan, Chassis Fan 1, Chassis Fan 2 and Over Heat Fan. There are six fans on the P4SCE, which are designated CPU Fan, Chassis Fan 1, Chassis Fan 2, Chassis Fan 3, Chassis Fan 4 and Over Heat Fan. (Chassis Fan 3 and Chassis Fan 4 are not monitored by BIOS.) Connect the fan on your CPU heatsink to the CPU Fan header. See the table on the right for pin definitions.

**Fan Header Pin Definitions
(CPU, Chassis and Overheat)**

Pin Number	Definition
1	Ground (black)
2	+12V (red)
3	Tachometer

Caution: These fan headers are DC power.

Chassis Intrusion

The Chassis Intrusion header is designated JL1. See the board layout in Chapter 1 for the location of JL1 and the table on the right for pin definitions.

**Chassis Intrusion
Pin Definitions (JL1)**

Pin Number	Definition
1	Intrusion Input
2	Ground

ATX PS/2 Keyboard and PS/2 Mouse Ports

The ATX PS/2 keyboard and the PS/2 mouse are located at J1. See the table on the right for pin definitions. (The mouse port is above the keyboard port. See the table on the right for pin definitions.

PS/2 Keyboard and Mouse Port Pin Definitions (J1)

Pin Number	Definition
1	Data
2	NC
3	Ground
4	VCC
5	Clock
6	NC

Universal Serial Bus (USB)

There are two Universal Serial Bus Connectors located on the I/O panel and additional six USB headers are located on the motherboard. These ports, labeled USB3 to USB8, can be used to provide front side chassis access (cables not included). See the tables on the right (below) for pin definitions.

USB Pin Definition

JPUSB

Pin#	Definition
1	+5V
2	PO-
3	PO+
4	Ground

USB 3/4/5/6/7/8

Pin Number	Definition	Pin Number	Definition
1	+5V	2	+5V
3	PO-	4	PO-
5	PO+	6	PO+
7	Ground	8	Ground
		10	Ground

Wake-On-LAN

The Wake-On-LAN header is designated WOL on the motherboard. See the table on the right for pin definitions. You must enable the LAN Wake-Up setting in BIOS to use this function. (You must also have a LAN card with a Wake-On-LAN connector and cable to use this feature.)

Wake-On-LAN Pin Definitions (WOL)

Pin Number	Definition
1	+5V Standby
2	Ground
3	Wake-up

Wake-On-Ring

The Wake-On-Ring header is designated WOR. This function allows your computer to receive and be "awakened" by an incoming call when in the suspend state. See the table on the right for pin definitions. You must also have a WOR card and cable to use WOR.

Wake-On-Ring Pin Definitions (WOR)

Pin Number	Definition
1	Ground
2	Wake-up

SATA LED

The SATA LED header is located at J37. This header will display all SATA activities. See the table on the right for pin definitions.

SATA LED Pin Definitions (J37)

Pin Number	Definition
1	SATA1
2	SATA2
3	NC
4	NC
5	NC

Keylock Enabled/Disabled

The Keylock header is located at J36. Close Pin 1 and Pin 2 of J36 to enable the function of Keylock. The default setting is "Open". See the table on the right for pin definitions.

Keylock Enabled/Disabled (J36) Pin Definitions

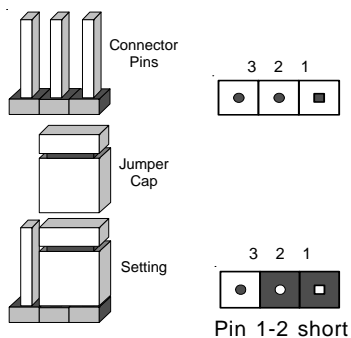
Pin Definitions	Function
1 & 2 (closed)	Enabled
1 & 2 (Open)	Disabled

2-7 Jumper Settings

Explanation of Jumpers

To modify the operation of the motherboard, jumpers can be used to choose between optional settings. Jumpers create shorts between two pins to change the function of the connector. Pin 1 is identified with a square solder pad on the printed circuit board. See the motherboard layout pages for jumper locations.

Note: On a two-pin jumper, "Closed" means the jumper is on both pins and "Open" means the jumper is either on only one pin or completely removed.



CMOS Clear

JBT1 is not actually a jumper but consists of two contact pads. To clear the contents of CMOS, short these pads together by touching them both with a metal conductor such as the head of a small screwdriver. **Note:** for ATX power supplies, you must completely shut down the system and remove the AC power cord before clearing CMOS.

USB Wake-Up (*USB1/2 Only)

Use JPUSB1 to enable or disable USB Wake-Up, which allows you to wakeup the system by pressing a key on the keyboard or by clicking the mouse when either is connected to the USB1 or USB2 port. Enable the jumper a to allow the system to be woken up from S1 and S3 in Windows OS. See the table on the right for jumper settings.

USB Wake-Up
Jumper Settings (JPUSB1)

Jumper	Position	Definition
	1-2	Disabled
	2-3	Enabled

Watch Dog Enable/Disable

JP8 enables controls the Watch Dog function. Watch Dog is a system monitor that takes action when a software application freezes the system. Close pins 1-2 to reset the system if a program freezes. Close pins 2-3 to generate a non-maskable interrupt for the program that has frozen. See the table on the right for jumper settings. Watch Dog must also be enabled in BIOS. (*Note, when the function of Watch Dog is enabled, the user needs to write his own application software in order to disable the Watch Dog Timer.)

Watch Dog
Jumper Settings (JP8)

Jumper	Position	Definition
	Pins 1-2	WD to Reset
	Pins 2-3	WD to NMI
	Open	Disabled

Front Side Bus Speed

JP1, JP2 are used to set the system (front side) bus speed for the processors. It is best to keep this jumper set to Auto. This jumper is used together with the CPU Clock setting in BIOS. See the table on the right for jumper settings.

	JP1	JP2
Auto	1-2	1-2
100 MHz (x4)	2-3	2-3
133 MHz (x4)	NC	2-3
Reserved	NC	NC
200 MHz (x4)	2-3	NC

Keyboard Wake-Up

The JPWAKE jumper is used to allow the system to be awakened by pressing a key on the keyboard from S1 or S3 in Windows OS. See the table on the right for jumper settings. Your power supply must meet ATX specification 2.01 or higher and supply 720 mA of standby power to use this feature.

**Keyboard Wake-Up
Jumper Settings
(JPWAKE)**

Jumper Position	Definition
1-2	Disabled
2-3	Enabled

LAN Enable/Disable

Change the setting of jumper J34, J35 (*P4SCE only) to enable or disable the onboard LAN on the motherboard. See the table on the right for jumper settings. The default setting is Enabled.

**LAN
Enable/Disable
Jumper Settings
(J34, J35)**

Jumper Position	Definition
Pins 1-2	Enabled
Pins 2-3	Disabled

2-8 Parallel Port, Floppy Drive, Hard Drive and AGP Connections

Use the following information to connect the floppy and hard disk drive cables.

- The floppy disk drive cable has seven twisted wires.
- A red mark on a wire typically designates the location of pin 1.
- A single floppy disk drive ribbon cable has 34 wires and two connectors to provide for two floppy disk drives. The connector with twisted wires always connects to drive A, and the connector that does not have twisted wires always connects to drive B.
- The 80-wire ATA100/66 IDE hard disk drive cable that came with your system has two connectors to support two drives. This special cable should be used to take advantage of the speed this new technology offers. The blue connector connects to the onboard IDE connector interface and the other connector(s) to your hard drive(s). Consult the documentation that came with your disk drive for details on actual jumper locations and settings for the hard disk drive.

Parallel Port Connector

The parallel port is located at J8. Refer to Figure 2-3 for location. See the table on the right for pin definitions.

Parallel (Printer) Port Pin Definitions
(J8)

Pin Number	Function	Pin Number	Function
1	Strobe-	2	Auto Feed-
3	Data Bit 0	4	Error-
5	Data Bit 1	6	Init-
7	Data Bit 2	8	SLCT IN-
9	Data Bit 3	10	GND
11	Data Bit 4	12	GND
13	Data Bit 5	14	GND
15	Data Bit 6	16	GND
17	Data Bit 7	18	GND
19	ACK	20	GND
21	BUSY	22	GND
23	PE	24	GND
25	SLCT	26	NC

Floppy Connector

The floppy connector is located at J7. Refer to Figure 2-3 for location. See the table on the right for pin definitions.

Floppy Connector Pin Definitions (J7)

Pin Number	Function	Pin Number	Function
1	GND	2	FDHDIN
3	GND	4	Reserved
5	Key	6	FDEDIN
7	GND	8	Index-
9	GND	10	Motor Enable
11	GND	12	Drive Select B-
13	GND	14	Drive Select A-
15	GND	16	Motor Enable
17	GND	18	DIR-
19	GND	20	STEP-
21	GND	22	Write Data-
23	GND	24	Write Gate-
25	GND	26	Track 00-
27	GND	28	Write Protect-
29	GND	30	Read Data-
31	GND	32	Side 1 Select-
33	GND	34	Diskette

IDE Connectors

You do not need to configure the onboard IDE interfaces (- Pins 13,14 of JF1.) Refer to Figure 2-3 for location. See the table on the left for pin definitions. **Note:** You must use the ATA100/66 cable included with your system to benefit from the ATA100/66 technology.

IDE Connector Pin Definitions (J2, J5)

Pin Number	Function	Pin Number	Function
1	Reset IDE	2	GND
3	Host Data 7	4	Host Data 8
5	Host Data 6	6	Host Data 9
7	Host Data 5	8	Host Data 10
9	Host Data 4	10	Host Data 11
11	Host Data 3	12	Host Data 12
13	Host Data 2	14	Host Data 13
15	Host Data 1	16	Host Data 14
17	Host Data 0	18	Host Data 15
19	GND	20	Key
21	DRQ3	22	GND
23	I/O Write-	24	GND
25	I/O Read-	26	GND
27	IOCHRDY	28	BALE
29	DACK3-	30	GND
31	IRQ14	32	IOCS16-
33	Addr 1	34	GND
35	Addr 0	36	Addr 2
37	Chip Select 0	38	Chip Select 1-
39	Activity	40	GND

(*Note: Please see Appendix C for Software installation.)

Chapter 3

Troubleshooting

3-1 Troubleshooting Procedures

Use the following procedures to troubleshoot your system. If you have followed all of the procedures below and still need assistance, refer to the 'Technical Support Procedures' and/or 'Returning Merchandise for Service' section(s) in this chapter. Always disconnect the AC power cord before adding, changing or installing any hardware components.

Before Power On

1. Check that the +5v standby LED is not lit (LE2 on motherboard).
2. Make sure that the 4-pin 12v power connector at J24 is connected to your power supply.
3. Make sure that there are no short circuits between the motherboard and chassis.
4. Disconnect all ribbon/wire cables from the motherboard, including those for the keyboard and mouse.
5. Remove all add-on cards.
6. Install a CPU and heatsink (making sure it is fully seated) and connect the chassis speaker and the power LED to the motherboard. Check all jumper settings as well.

No Power

1. Make sure that there are no short circuits exist between the motherboard and the chassis.
2. Check if all jumpers are set to their default positions.
3. Make sure that the 115V/230V switch on the power supply is properly set.
4. Turn the power switch on and off to test the system.
5. The battery on your motherboard may be old. Check to verify that it still supplies ~3VDC. If it does not, replace it with a new one.

No Video

1. If the power is on but you have no video, remove all the add-on cards and cables.
 2. Use the speaker to determine if any beep codes exist. Refer to Appendix A for details on beep codes.
-

NOTE

If you are a system integrator, VAR or OEM, a POST diagnostics card is recommended. For I/O port 80h codes, refer to App. B.

Memory Errors

1. Make sure the DIMM modules are properly and fully installed.
2. You should be using unbuffered ECC/Non ECC DDR memory (see the next page). Also, it is recommended that you use the same memory speed for all DIMMs in the system. See Section 2-4 for memory limitations.
3. Check for bad DIMM modules or slots by swapping modules between slots and noting the results.
4. Check the power supply voltage 115V/230V switch.

Losing the System's Setup Configuration

1. Make sure that you are using a high quality power supply. A poor quality power supply may cause the system to lose the CMOS setup information. Refer to Section 1-6 for details on recommended power supplies.
2. The battery on your motherboard may be old. Check to verify that it still supplies ~3VDC. If it does not, replace it with a new one.
3. If the above steps do not fix the Setup Configuration problem, contact your vendor for repairs.

3-2 Technical Support Procedures

Before contacting Technical Support, please take the following steps. Also, note that as a motherboard manufacturer, Supermicro does not sell directly to end-users, so it is best to first check with your distributor or reseller for troubleshooting services. They should know of any possible problem(s) with the specific system configuration that was sold to you.

1. Please go through the 'Troubleshooting Procedures' and 'Frequently Asked Questions' (FAQs) sections in this chapter or see the FAQs on our web site (<http://www.supermicro.com/support/faqs/>) before contacting Technical Support.
2. BIOS upgrades can be downloaded from our web site at <http://www.supermicro.com/support/bios>.

Note: Not all BIOS can be flashed depending on the modifications to the boot block code.

3. If you still cannot resolve the problem, include the following information when contacting Supermicro for technical support:
 - Motherboard model and PCB revision number
 - BIOS release date/version (this can be seen on the initial display when your system first boots up)
 - System configurationAn example of a Technical Support form is posted on our web site at <http://www.supermicro.com/support/contact.cfm>.
4. Distributors: For immediate assistance, please have your account number ready when contacting our technical support department by e-mail at support@supermicro.com or by fax at (408) 503-8019.

3-3 Frequently Asked Questions

Question: What type of memory does my motherboard support?

Answer: The P4SCA/P4SCE supports up to 4 GB of ECC/non-ECC, **unbuffered** DDR-400/333/266, two-way interleaved SDRAM. [See Section 2-4 for details on installing memory.](#)

Question: How do I update my BIOS?

Answer: It is recommended that you **not** upgrade your BIOS if you are not experiencing problems with your system. Updated BIOS files are located on our web site at <http://www.supermicro.com/support/bios>. Please check our BIOS warning message and the information on how to update your BIOS on our web site. Also, check the current BIOS revision and make sure it is newer than your current BIOS before downloading. Select your mainboard model and download the BIOS file to your computer. Unzip the BIOS update file and you will find the readme.txt (flash instructions), the awdf flash.exe (BIOS flash utility) and the BIOS image (xxxx.bin) files. Copy these files onto a bootable floppy and reboot your system. It is not necessary to set the BIOS boot block protection jumpers on the mainboard. At the DOS prompt upon rebooting, enter the command "awdf flash." Then type in the BIOS file that you want to update (xxxx.bin).

Question: What's on the CD that came with my motherboard?

Answer: The supplied compact disc has quite a few drivers and programs that will greatly enhance your system. We recommend that you review the CD and install the applications you need. Applications on the CD include chipset drivers for Windows and security and audio drivers.

Question: I see some of my PCI devices sharing IRQs, but the system seems to be fine. Is this correct or not?

Answer: Some PCI Bus Mastering devices can share IRQs without performance penalties. These devices are designed to work correctly while sharing IRQs. See Table 3-1, below, for details on shared IRQs.

Table 3-1. P4SCA/P4SCE IRQs

PCI 1 shares an IRQ with the USB 2.0 Controller, System Management Bus Controller, onboard VGA PCI 2 shares an IRQ with a USB Controller (USB5/6)*, SATA, onboard VGA PCI 3 shares an IRQ with a USB Controller (USB3/USB4)*, onboard VGA PCI 4 shares an IRQ with LAN1 & LAN2 PCI 5 shares an IRQ with LAN1 & LAN2 (*P4SCE only) ISA (1, 2, 3) share IRQ 14 with Primary IDE (*P4SCA only) ISA (1, 2, 3) share IRQ 15 with Secondary IDE (*P4SCA only)

*Assumes USB 2.0 drivers have not been installed.

Question: How do I connect the ATA100/66 cable to my IDE device(s)?

Answer: The 80-wire/40-pin high-density ATA100/66 IDE cable that came with your system has two connectors to support two drives. This special cable must be used to take advantage of the speed the ATA100/66 technology offers. **Connect the blue connector to the onboard IDE header and the other connector(s) to your hard drive(s).** Consult the documentation that came with your disk drive for details on actual jumper locations and settings.

3-4 Returning Merchandise for Service

A receipt or copy of your invoice marked with the date of purchase is required before any warranty service will be rendered. You can obtain service by calling your vendor for a Returned Merchandise Authorization (RMA) number. When returning to the manufacturer, the RMA number should be prominently displayed on the outside of the shipping carton, and mailed prepaid or hand-carried. Shipping and handling charges will be applied for all orders that must be mailed when service is complete.

This warranty only covers normal consumer use and does not cover damages incurred in shipping or from failure due to the alteration, misuse, abuse or improper maintenance of products.

During the warranty period, contact your distributor first for any product problems.

NOTES

Chapter 4

BIOS

4-1 Introduction

This chapter describes the AwardBIOS for the P4SCA/P4SCE. The Award ROM BIOS is stored in a Flash chip and can be easily upgraded using a floppy disk-based program.

Note: Due to periodic changes to the BIOS, some settings may have been added or deleted and might not yet be recorded in this manual. Refer to the Manual Download area of our web site for any changes to BIOS that are not reflected in this manual.

System BIOS

The BIOS is the Basic Input Output System used in all IBM® PC, XT™, AT®, and PS/2® compatible computers. The AwardBIOS Flash chip stores the system parameters, such as amount of memory, type of disk drives and video displays, etc. CMOS requires very little power. When the computer is turned off, a back-up battery provides power to the BIOS Flash chip, enabling it to retain the system parameters. Each time the computer is powered on, the computer is then configured with the values stored in the BIOS ROM by the system BIOS, which gains control when the computer is powered on.

How To Change the Configuration Data

The CMOS information that determines the system parameters may be changed by entering the BIOS Setup utility. This Setup utility can be accessed by pressing at the appropriate time during system boot.

Starting the Setup Utility

Normally, the only visible POST (Power On Self Test) routine is the memory test. As the memory is being tested, press the <Delete> key to enter the main menu of the BIOS Setup utility. From the main menu, you can access the other setup screens, such as the Chipset and Power menus. Section 4-3 gives detailed descriptions of each parameter setting in the Setup utility.

4-2 Running Setup

**Optimal default settings are in bold text unless otherwise noted.*

The BIOS setup options described in this section are selected by choosing the appropriate text from the Main BIOS Setup screen. All displayed text is described in this section, although the screen display is often all you need to understand how to set the options.

When you first power on the computer, the AwardBIOS™ is immediately activated.

While the BIOS is in control, the Setup program can be activated in one of two ways:

1. By pressing immediately after turning the system on, or
2. When the following message appears briefly at the bottom of the screen during the POST (Power On Self-Test), press the key to activate the Main Setup Menu.

Press DEL to enter SETUP

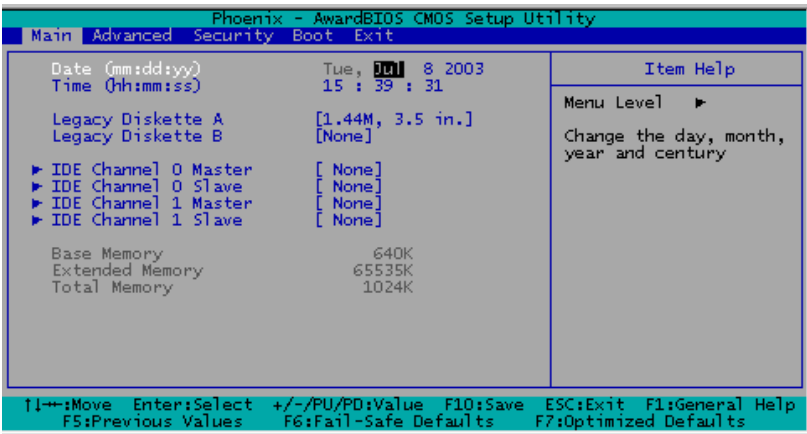
4-3 Main BIOS Setup

All Main Setup options are described in this section. The Main BIOS Setup screen is displayed below.

Use the <Up> <Down> arrow keys or the <Tab> key to move among the different settings in the above menu.

Press the <Esc> key to exit the CMOS Setup Menu and use the <Left> <Right> arrow keys to enter the other categories of BIOS settings. The next section is described in detail to illustrate how to navigate through the menus.

Main BIOS Setup Menu



Date/Time

Set the system date and time. Key in the correct information in the "mm", "dd" and "yy" fields. Press the "Enter" key to save the data.

Legacy Diskette A

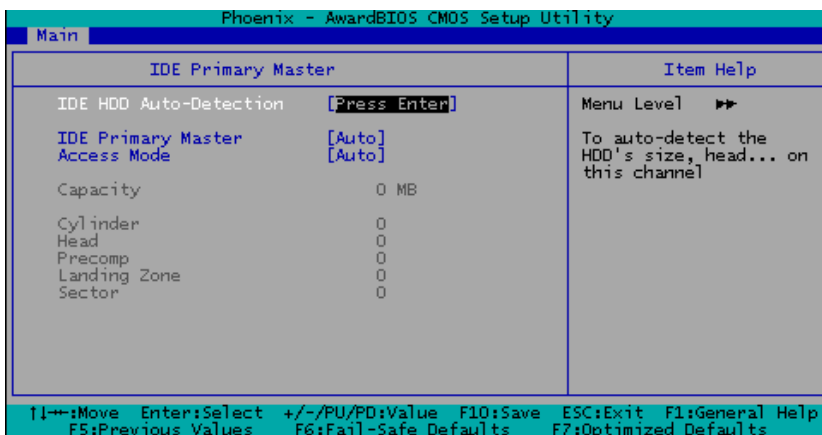
This setting allows the user to set the type of floppy disk drive installed as diskette A. The options are None, 360Kb 5.25 in, 1.2MB 5.25 in, 720Kb 3.5 in, **1.44/1.25MB**, 3.5 in and 2.88MB 3.5 in.

Legacy Diskette B

This setting allows the user to set the type of floppy disk drive installed as diskette B. The options are **None**, 360Kb 5.25 in, 1.2MB 5.25 in, 720Kb 3.5 in, 1.44/1.25MB, 3.5 in and 2.88MB 3.5 in.

► IDE Channel 0 Master/Slave, IDE Channel 1 Master/Slave

These settings allow the user to set the parameters of the IDE Channel 0 Master/Slave and IDE Channel 1 Master/Slave slots. Hit <Enter> to activate the following sub-menu screen for detailed options of these items. Set the correct configurations accordingly. The items included in the sub-menu are:



IDE HDD Auto-Detection

This option allows the user to determine the manner in which the AwardBIOS sets the settings for the IDE Primary Master Device. The options are "None", "**Auto**" and "Manual."

IDE Channel 0 Master

Press the <Auto> key to activate the 'IDE HDD Auto-Detection' function, which will allow BIOS to automatically detect the status of the IDE HDD installed in the system, such as the size, the number of cylinders, the configurations of items such as Head, Precomp, Landing Zone and Sector. The options are "None", "**Auto**", and "Manual."

Access Mode

This item determines the location through which the AwardBIOS accesses the IDE Primary Master Device. The settings are "CHS", "LBA", "Large", and "**Auto**".

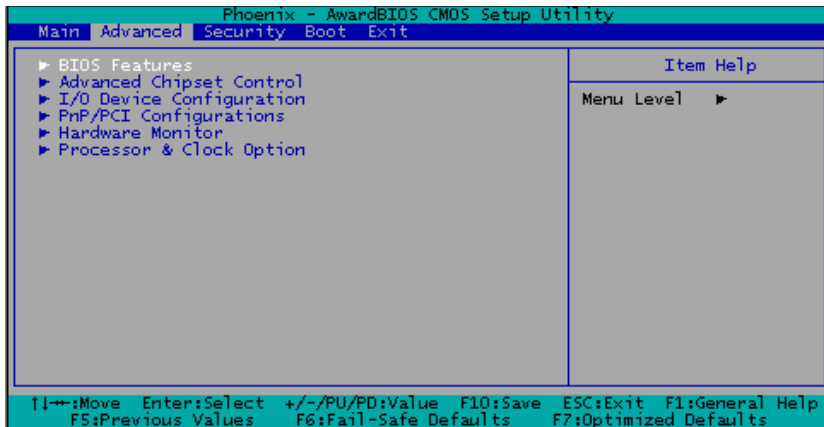
Base Memory/Extended Memory/Total Memory

This item indicates the size of each memory type being detected by the BIOS.

4-4 Advanced BIOS Setup

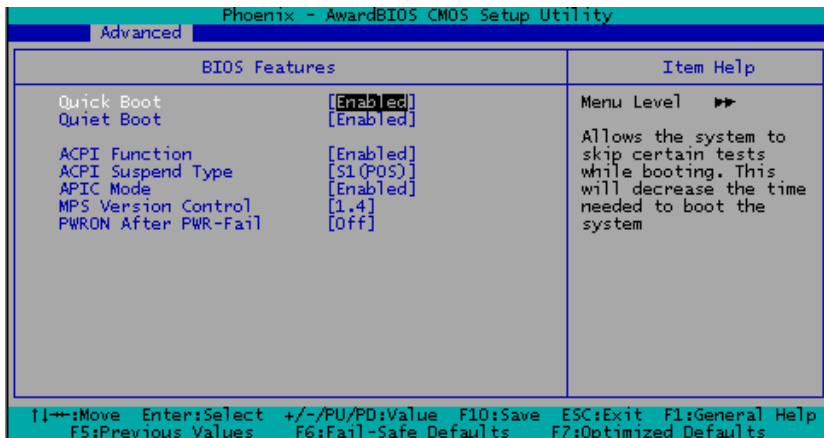
Choose Advanced BIOS Setup from the Award BIOS main menu with the Left/Right arrow keys. You should see the following display. Select one of the items in the left frame of the screen to go to the sub screen for that item.

Advanced BIOS Setup options are displayed by highlighting the option using the arrow keys. All Advanced BIOS Setup options are described in this section.



4-4.1 Advanced BIOS Features

When the item of Advanced BIOS Features is highlighted, press the <Enter> key to activate the screen below:



Quick Boot

If enabled, this feature allows the system to skip certain tests while booting. This will decrease the time needed to boot the system. The settings are "Enabled" and "Disabled".

Quiet Boot

This feature allows the user to activate the function of "Quiet Boot". "Enabled" and "Disabled".

ACPI Function

Select "Enabled" to activate the function of BIOS Support for Advanced Configuration and Power Interface features. The settings are "Enabled" or "Disabled".

ACPI Suspend Type

If enabled, the option allows the user to determine the ACPI Suspend type. The options are **S1(POS)**, S3(STR), S1&S3.

APIC Mode

This setting allows you to **Enable** or Disable APIC. APIC is used to assign interrupt signals to a specific processor on multi-processor system and provides IRQs beyond the conventional 16 under Windows 2000 or XP. It has no effect on single processor systems.

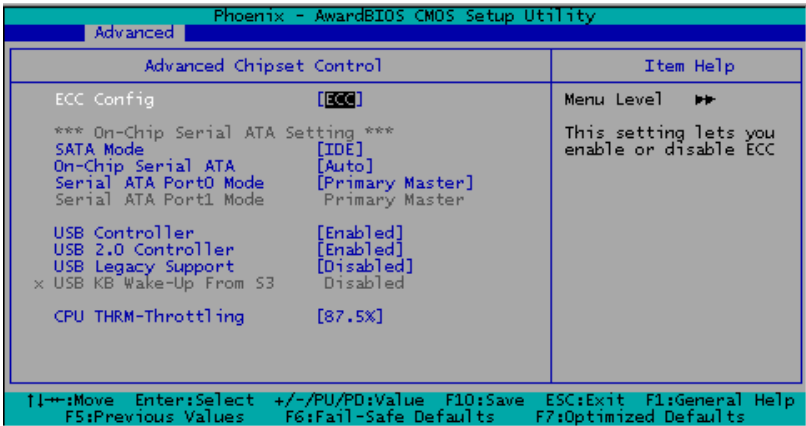
MPS Version Control

This setting allows you to state the MPS version for your operating system. Options are "1.1" and "**1.4**".

PWRON After PWR-Fail

This setting allows the user to specify how the system will respond when power is reapplied after the system has gone down due to a power failure. The options are "**Off**", "On" and "Former-Sts (Former Status)".

4-4.2 Advanced Chipset Control



ECC Configuration

This setting allows you to enable or disable ECC (Error Correction and Checking). The options are **ECC** and Non-ECC.

SATA Mode

This setting allows you to set the SATA Mode RAID via BIOS. The options are **RAID** and IDE.

On-Chip Serial ATA

This setting allows you to configure On-Chip Chipset Configurations. Select "Disabled" to disable SATA controller. If "Auto" is selected, BIOS will automatically configure the settings for SATA controller. Select "Combined Mode" to combine the functionality of Parallel ATA (PATA) and Serial ATA(SATA) (* with the maximum of two IDE drives available for each channel.) If "Enhanced Mode" is selected, both SATA and PATA are supported (*with the maximum of 6 IDE drives available.) If "SATA Only" is selected, SATA will operate in the Legacy Mode. The options are Disabled, **Auto**, Combined Mode, Enhanced Mode, and SATA only.

Serial ATA Port0/1 mode

This setting allows you to configure Serial ATA Port0/1 modes. The options are **Primary Master**, Primary Slave, Secondary Master, Secondary Slave, SATA0 Master and SATA1 Master.

USB Controller

This setting allows you to enable or disable the USB Controller. The options are **Enabled**, and Disabled.

USB 2.0 Controller

This setting allows you to enable or disable USB 2.0 (EHCI) Controller. The options are **Enabled**, and Disabled.

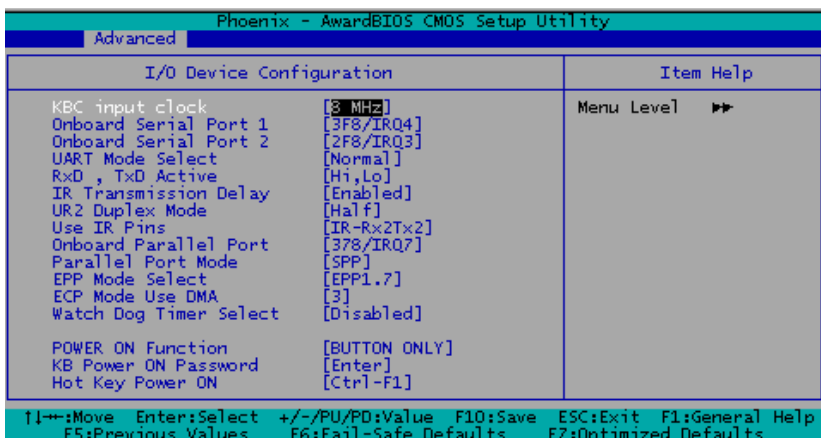
USB Legacy Support

This setting allows you to enable or disable the functions of USB, Keyboard/Mouse under POST and DOS. The options are **Disabled**, and Enabled.

CPU THRM-Throttling

THRM throttling is used to lower power consumption and reduce the heat generated by the CPU. The options for this setting are "87.5%", "75%", "62.5%", "50%", "37.5%", "25%" and "12.5%".

4-4.3 I/O Device Configuration



Keyboard Input Clock

This setting allows to you set the speed of the keyboard. The options are 6 MHz, **8 MHz**, 12 MHz, and 16 MHz.

Onboard Serial Port1/Onboard Serial Port2

This setting allows the user to set the address and the corresponding IRQ for the Serial Port1 and Serial Port 2. The options are "Disabled", "3F8/IRQ4", "2F8/IRQ3", "3E8/IRQ4", "2E8/IRQ3", and "Auto". The default setting for Serial Port1 is "**3F8/IRQ4**" and the default for Port 2 is "**2F8/IRQ3**".

UART Mode Select

This setting allows the user to select the UART mode for the BIOS. The options are "IrDA", "ASKIR" and "**Normal**".

RxD, TxD Active

This allows the user to change the settings for the "RxD, TxD Active" function. The options are "Hi, Hi", "**Hi, Lo**", "Lo, Hi", and "Lo, Lo".

IR Transmission Delay

If "Enabled", the transmission of IR (infrared) signals will be delayed. The options are "**Enabled**" and "Disabled".

UR2 Duplex Mode

This setting set the mode for the UR2 Duplex Mode. The options are "Full" and "**Half**".

Use IR Pins

This item sets the usage of the IR pins. The options are "RxD2, TxD2" and "**IR-Rx2Tx2**".

Onboard Parallel Port

This setting allows the user to set the address and the corresponding IRQ for the onboard parallel port. The options are "Disabled", "**378/IRQ7**", "278/IRQ5" and "3BC/IRQ7".

Parallel Port Mode

This setting sets the mode for the onboard Parallel port. The options are "SPP," "EPP", "ECP" "ECP+EPP" and "Normal".

EPP Mode Select

This setting allows the user to select the EPP port type. The options are "EPP 1.9" and "EPP 1.7".

ECP Mode Use DMA

This setting allows the user to select the DMA channel for the ECP mode (port) to use. The options are "1" and "3".

Watch Dog Timer Select

This setting allows you to select the setting for the Watch Dog Timer. The Options are "Disabled", "10 Sec", "20 Sec", "30 Sec", "40 Sec", "1 min", "2 min", and "Enabled".

Power On Function

This setting allows the user to decide which method to use to power on the system. The options are "Password", "Hot Key", "Mouse Left", "Mouse Right", "Any Key", and "Button Only".

KB Power On Password

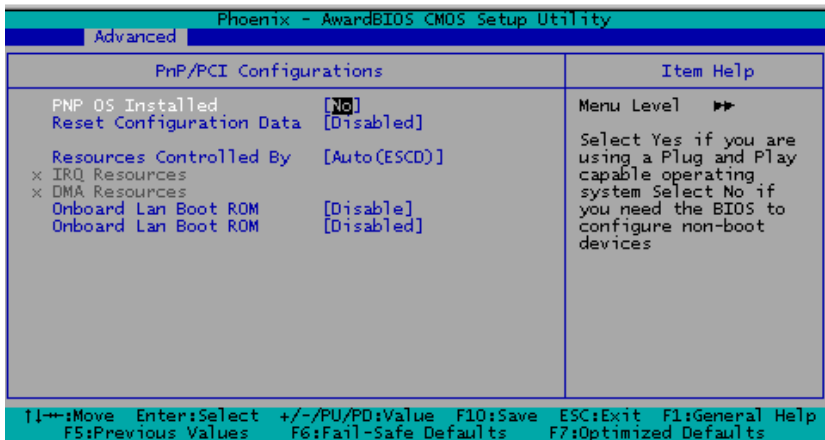
This setting allows the user to enter the Password when the system is powered on via keyboard.

Hot Key Power On

This setting allows the user to decide which hot-keys to use in order to power on the system. The options are "Ctrl-F1", "Ctrl-F2, Ctrl-F3", "Ctrl-F4", "Ctrl-F5", "Ctrl-F6", "Ctrl-F7", and "Ctrl-F8".

4-4.4 PnP Configuration

Choose PCI/PnP Configurations from the Award BIOS main menu with the Left/Right arrow keys. You should see the following display:



PnP OS Install

Enter "Yes" if you are using an OS that is PnP (Plug and Play) - compatible. Enter "No" if your OS does not support PnP.

Reset Configuration Data

Enabling this setting resets the extended system configuration data when you exit setup. Do this when you have installed a new add-on and the system reconfiguration has caused such a serious conflict that the OS cannot reboot the system. The options are "Enabled" and "**Disabled**".

Resources Controlled By

This setting allows BIOS to automatically configure all boot and Plug and Play compatible devices. If you choose Auto, you cannot select the IRQ, DMA and memory base address fields, because BIOS automatically assigns them. The options are "**Auto <ESCD>**" and "Manual".

Onboard LAN Boot (*P4SCA)

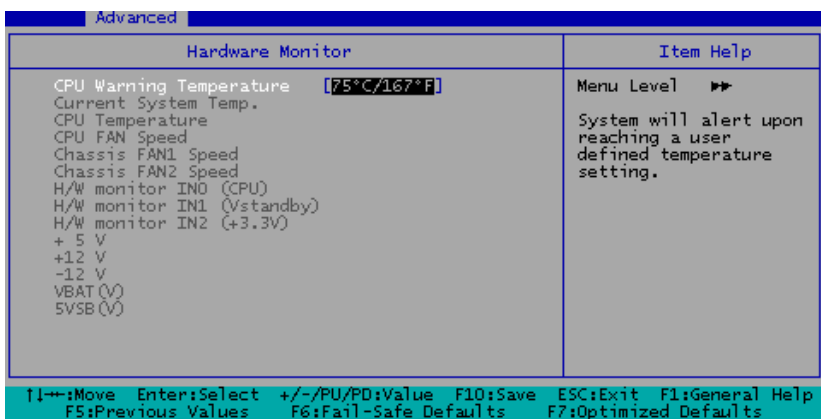
Select "Enabled" to enable the Boot ROM embedded in the Onboard LAN Chip. The options are: "Enabled" and "**Disabled**".

Onboard LAN Boot (*P4SCE)

Select "Enabled" to enable the Boot ROM embedded in the Onboard LAN Chip. The options are: "Enabled", "LAN 1", "LAN 2", and "Disabled".

4-4.5 Hardware Monitors

There are only three settings on this menu (below). The rest of this menu shows various temperatures and voltage levels as indicated.

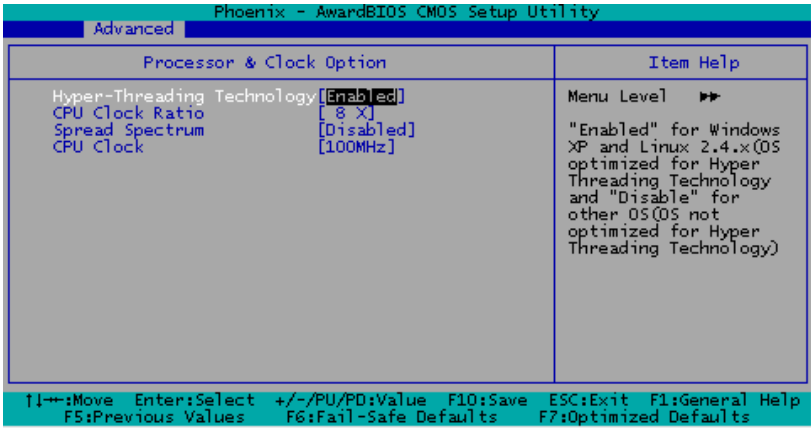


CPU Warning Temperature

This allows you to set the CPU warning temperature. If the CPU temperature reaches this threshold, an alarm will activate and a warning message will be displayed onscreen. The options are "Disabled", "60° C/140° F", "65° C/149° F", "70° C/158° F", **"75° C/167° F"**, "80° C/176° F" and "85° C/185° F".

Note: In the Windows OS environment, the Supero Doctor III settings take precedence over the BIOS settings. When first installed, the SD III adopts the temperature threshold settings previously set in the BIOS. Any subsequent changes to these thresholds must be made within Supero Doctor, since the SDIII settings override the BIOS settings. For the Windows OS to adopt the BIOS temperature threshold settings, please change the SDIII settings to be the same as those set in the BIOS.

4-4.6 Processor & Clock Options



Hyper-Threading Technology (Available when supported by the CPU and the OS)

Select "Enabled" to use Hyper-Threading Technology to improve CPU performance. The settings are "Disabled" and "**Enabled**."

CPU Clock Ration

Key in a number between 8x to 50x to set the clock ratio of the processor. The default setting is **8x**. (*8x is only available for retail CPUs.)

Spread Spectrum

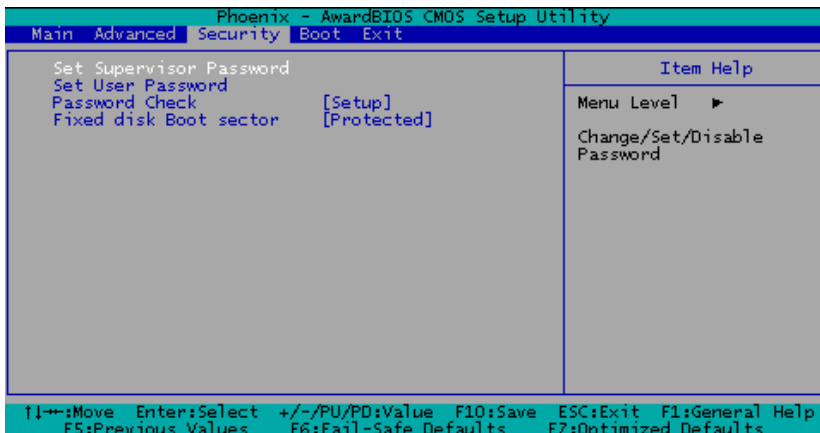
Spread Spectrum is a technique used to stabilize a system by reducing the level of ElectroMagnetic Interference. The options are "Enabled" and "**Disabled**".

CPU Clock

Key in a number between **100** and 233 to set the CPU clock (MHz). Supermicro does not recommend or make any guarantees with CPU overclocking.

4-5 Security

Choose Security from the Award BIOS main menu with the Left/Right arrow keys. You should see the following display:



Set Supervisor Password

When the item "Set Supervisor Password" is highlighted on the above screen, press the <Enter> key. When prompted, type the Supervisor Password in the dialogue box to set or to change the Supervisor Password.

Set User Password

When the item "Set User Password" is highlighted on the above screen, press the <Enter> key. When prompted, type the User Password in the dialogue box to set or to change the User Password.

Password Check

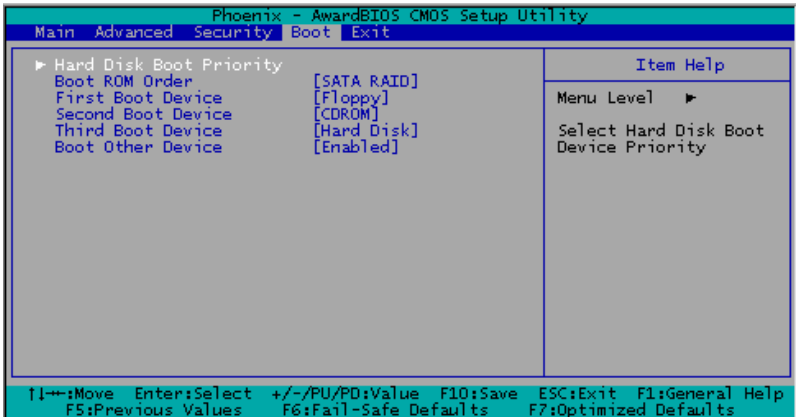
This setting allows the user to determine if a password is required for a user to enter the system at bootup or if the password is required only when the user enters the CMOS setup. The options are "System" and "**Setup**".

Fixed Disk Boot Sector

This setting allows the user to configure the Fixed Disk Boot Sector. The default setting is "**Protected**".

4-6 Boot

Choose Boot from the Award BIOS main menu with the Left/Right arrow keys. You should see the following display:



Hard Disk Boot Priority

This item allows the user to select the Boot Priority of Hard Disk Devices (1-8).

Boot ROM Order

This item allows the user to specify the order of ROM (Read Only Memory) the system scans first during bootup. The options are **"SATA RAID"** and **"PCI Card"**.

First Boot Device

This item allows the user to set the first boot-up device. The options are **"Floppy"**, **"LS120"**, **"HDD"**, **"CDROM"**, **"ZIP100"**, **"USB-FDD"**, **"USB-ZIP"**, **"USB-CDROM"**, **"USB-HDD"**, **"LAN"** and **"Disabled"**.

Second Boot Device

This item allows the user to set the second boot-up device. The options are **"Floppy"**, **"LS120"**, **"HDD"**, **"CDROM"**, **"ZIP100"**, **"USB-FDD"**, **"USB-ZIP"**, **"USB-CDROM"**, **"USB-HDD"**, **"LAN"** and **"Disabled"**.

Third Boot Device

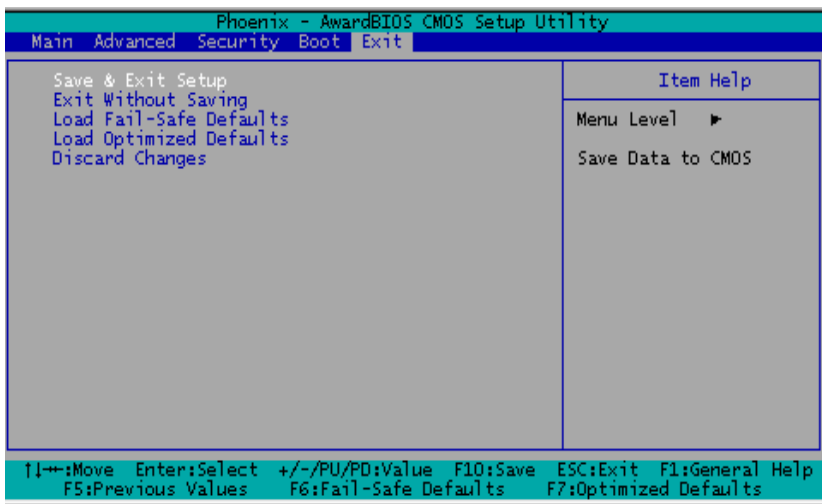
This item allows the user to set the third boot-up device. The options are "Floppy", "LS120", "HDD", "SCSI", "CDROM", "ZIP100", "USB-FDD", "USB-ZIP", "USB-CDROM", "USB-HDD", "LAN" and "Disabled".

Boot Other Device

If enabled, this option enables the BIOS to load the OS from another device rather than the ones that have been specified as the first, second and third boot up devices. The settings are "Enabled" and "Disabled".

4-7 Exit

Choose Exit from the Award BIOS main menu with the Left/Right arrow keys. You should see the following display:



Save & Exit Setup

When the item "Save & Exit Setup" is highlighted, press <Enter> to save the changes you've made in the BIOS program (CMOS) and exit. Your system should, then, continue with the boot-up procedure.

Exit without Saving

When the item "Exit without Saving" is highlighted, press <Enter> to exit the Setup routine without saving any changes you may have made. Your system should then continue with the boot-up procedure.

Load Fail-Safe Defaults

Highlight this item and hit <Enter> to load the default settings for all items in the BIOS Setup. These are the safest settings to use.

Load Optimized Defaults

Highlight this item and hit <Enter> to load the optimized settings for all items in the BIOS Setup. These settings provide you with optimal system performance.

Discard Changes

When the item "Discard Changes" is highlighted, press <Enter> to discard any changes you made to the BIOS settings and to stay in BIOS Setup. Your system should then continue with the boot-up procedure.

Notes

Appendix A BIOS POST Messages

During the Power-On Self-Test (POST), the BIOS will check for problems. If a problem is found, the BIOS will activate an alarm or display a message. The following is a list of such BIOS messages.

Beeps

1 long beep

1 long beep+2 short beeps

Error Messages

Memory Modules Errors

VGA Errors

Notes

Appendix B

Award BIOS POST Codes

This section lists the POST (Power On Self Testing) Codes for the Award BIOS.

POST (hex)	Description
CFh	Test CMOS R/W functionality.
C0h	Early chipset initialization: -Disable shadow RAM -Disable L2 cache (socket 7 or below) -Program basic chipset registers
C1h	Detect memory -Auto-detection of DRAM size, type and ECC. -Auto-detection of L2 cache (socket 7 or below)
C3h	Expand compressed BIOS code to DRAM
C5h	Call chipset hook to copy BIOS back to E000 & F000 shadow RAM.
0h1	Expand the Xgroup codes locating in physical address 1000:0
02h	Reserved
03h	Initial Superio_Early_Init switch.
04h	Reserved
05h	1. Blank out screen 2. Clear CMOS error flag
06h	Reserved
07h	1. Clear 8042 interface 2. Initialize 8042 self-test
08h	1. Test special keyboard controller for Winbond 977 series Super I/O chips. 2. Enable keyboard interface.
09h	Reserved
0Ah	<ul style="list-style-type: none"> ● Disable PS/2 mouse interface (optional). ● Auto detect ports for keyboard & mouse followed by a port & interface swap (optional). ● Reset keyboard for Winbond 977 series Super I/O chips.
0Bh	Reserved
0Ch	Reserved
0Dh	Reserved
0Eh	Test F000h segment shadow to see whether it is R/W-able or not. If test fails, keep beeping the speaker.

POST (hex)	Description
0Fh	Reserved
10h	Auto detect flash type to load appropriate flash R/W codes into the run time area in F000 for ESCD & DMI support.
11h	Reserved
12h	Use walking 1's algorithm to check out interface in CMOS circuitry. Also set real-time clock power status, and then check for override.
13h	Reserved
14h	Program chipset default values into chipset. Chipset default values are MODBINable by OEM customers.
15h	Reserved
16h	Initial Early_Init_Onboard_Generator switch.
17h	Reserved
18h	Detect CPU information including brand, SMI type (Cyrix or Intel) and CPU level (586 or 686).
19h	Reserved
1Ah	Reserved
1Bh	Initial interrupts vector table. If no special specified, all H/W interrupts are directed to SPURIOUS_INT_HDLR & S/W interrupts to SPURIOUS_soft_HDLR.
1Ch	Reserved
1Dh	Initial EARLY_PM_INIT switch.
1Eh	Reserved
1Fh	Load keyboard matrix (notebook platform)
20h	Reserved
21h	HPM initialization (notebook platform)
22h	Reserved
23h	<ol style="list-style-type: none"> 1. Check validity of RTC value: e.g. a value of 5Ah is an invalid value for RTC minute. 2. Load CMOS settings into BIOS stack. If CMOS checksum fails, use default value instead. 3. Prepare BIOS resource map for PCI & PnP use. If ESCD is valid, take into consideration of the ESCD's legacy information. 4. Onboard clock generator initialization. Disable respective clock resource to empty PCI & DIMM slots. 5. Early PCI initialization: -Enumerate PCI bus number -Assign memory & I/O resource -Search for a valid VGA device & VGA BIOS, and put it into C000:0.
24h	Reserved
25h	Reserved
26h	Reserved
27h	Initialize INT 09 buffer
28h	Reserved
29h	<ul style="list-style-type: none"> ● Program CPU internal MTRR (P6 & PII) for 0-640K memory address. ● Initialize the APIC for Pentium class CPU. ● Program early chipset according to CMOS setup. Example: onboard IDE controller. ● Measure CPU speed. ● Invoke video BIOS.
2Ah	Reserved
2Bh	Reserved
2Ch	Reserved

POST (hex)	Description
2Dh	1. Initialize multi-language 2. Put information on screen display, including Award title, CPU type, CPU speed
2Eh	Reserved
2Fh	Reserved
30h	Reserved
31h	Reserved
32h	Reserved
33h	Reset keyboard except Winbond 977 series Super I/O chips.
34h	Reserved
35h	Reserved
36h	Reserved
37h	Reserved
38h	Reserved
39h	Reserved
3Ah	Reserved
3Bh	Reserved
3Ch	Test 8254
3Dh	Reserved
3Eh	Test 8259 interrupt mask bits for channel 1.
3Fh	Reserved
40h	Test 8259 interrupt mask bits for channel 2.
41h	Reserved
42h	Reserved
43h	Test 8259 functionality.
44h	Reserved
45h	Reserved
46h	Reserved
47h	Initialize EISA slot
48h	Reserved
49h	1. Calculate total memory by testing the last double word of each 64K page. 2. Program writes allocation for AMD K5 CPU.
4Ah	Reserved
4Bh	Reserved
4Ch	Reserved
4Dh	Reserved
4Eh	1. Program MTRR of M1 CPU 2. Initialize L2 cache for P6 class CPU & program CPU with proper cacheable range. 3. Initialize the APIC for P6 class CPU. 4. On MP platform, adjust the cacheable range to smaller one in case the cacheable ranges between each CPU are not identical.
4Fh	Reserved
50h	Initialize USB
51h	Reserved
52h	Test all memory (clear all extended memory to 0)
53h	Reserved
54h	Reserved
55h	Display number of processors (multi-processor platform)
56h	Reserved
57h	1. Display PnP logo 2. Early ISA PnP initialization -Assign CSN to every ISA PnP device.

POST (hex)	Description
58h	Reserved
59h	Initialize the combined Trend Anti-Virus code.
5Ah	Reserved
5Bh	(Optional Feature) Show message for entering AWDFLASH.EXE from FDD (optional)
5Ch	Reserved
5Dh	1. Initialize Init_Onboard_Super_IO switch. 2. Initialize Init_Onboard_AUDIO switch.
5Eh	Reserved
5Fh	Reserved
60h	Okay to enter Setup utility; i.e. not until this POST stage can users enter the CMOS setup utility.
61h	Reserved
62h	Reserved
63h	Reserved
64h	Reserved
65h	Initialize PS/2 Mouse
66h	Reserved
67h	Prepare memory size information for function call: INT 15h ax=E820h
68h	Reserved
69h	Turn on L2 cache
6Ah	Reserved
6Bh	Program chipset registers according to items described in Setup & Auto-configuration table.
6Ch	Reserved
6Dh	1. Assign resources to all ISA PnP devices. 2. Auto assign ports to onboard COM ports if the corresponding item in Setup is set to "AUTO".
6Eh	Reserved
6Fh	1. Initialize floppy controller 2. Set up floppy related fields in 40:hardware.
70h	Reserved
71h	Reserved
72h	Reserved
73h	(Optional Feature) Enter AWDFLASH.EXE if : -AWDFLASH is found in floppy drive. -ALT+F2 is pressed
74h	Reserved
75h	Detect & install all IDE devices: HDD, LS120, ZIP, CDROM.....
76h	Reserved
77h	Detect serial ports & parallel ports.
78h	Reserved
79h	Reserved
7Ah	Detect & install co-processor
7Bh	Reserved
7Ch	Reserved
7Dh	Reserved
7Eh	Reserved
7Fh	1. Switch back to text mode if full screen logo is supported. -If errors occur, report errors & wait for keys -If no errors occur or F1 key is pressed to continue: ♦Clear EPA or customization logo.

POST (hex)	Description
80h	Reserved
81h	Reserved
82h	<ol style="list-style-type: none"> 1. Call chipset power management hook. 2. Recover the text font used by EPA logo (not for full screen logo) 3. If password is set, ask for password.
83h	Save all data in stack back to CMOS
84h	Initialize ISA PnP boot devices
85h	<ol style="list-style-type: none"> 1. USB final Initialization 2. NET PC: Build SYSID structure 3. Switch screen back to text mode 4. Set up ACPI table at top of memory. 5. Invoke ISA adapter ROMs 6. Assign IRQs to PCI devices 7. Initialize APM 8. Clear noise of IRQs.
86h	Reserved
87h	Reserved
88h	Reserved
89h	Reserved
90h	Reserved
91h	Reserved
92h	Reserved
93h	Read HDD boot sector information for Trend Anti-Virus code
94h	<ol style="list-style-type: none"> 1. Enable L2 cache 2. Program boot up speed 3. Chipset final initialization. 4. Power management final initialization 5. Clear screen & display summary table 6. Program K6 write allocation 7. Program P6 class write combining
95h	<ol style="list-style-type: none"> 1. Program daylight saving 2. Update keyboard LED & typematic rate
96h	<ol style="list-style-type: none"> 1. Build MP table 2. Build & update ESCD 3. Set CMOS century to 20h or 19h 4. Load CMOS time into DOS timer tick 5. Build MSIRQ routing table.
FFh	Boot attempt (INT 19h)

NOTES

Appendix C

Installing Software Programs and Drivers

(*Note: if you do not wish to configure onboard SATA RAID functions, please go directly to Section C-5 on Page C-22 for Operating System & Other Software Installation.)

After all the hardware has been installed, you must first configure Intel's ICH5R SATA RAID (*Note) before you install the Windows operating system, and other software drivers. The necessary drivers are all included on the Supermicro CDs that came packaged with your motherboard.

C-1 Configuring Intel ICH5R SATA RAID Function

To configure SATARAID functions, you must first configure the RAID Level that you desire in the Intel ICH5R SATA RAID Utility program before you install the Windows XP/2000 operating system, and other software drivers. The necessary drivers are all included on the Supermicro CDs that came packaged with your motherboard. (*Note: the current version of ICH5R SATA RAID Utility can only support Windows XP/2000 Operating System.)

Serial ATA (SATA)

Serial ATA(SATA) is a physical storage interface. It uses a single cable with a minimum of four wires to create a point-to-point connection between devices. It is a serial link which supports SATA Transfer rates up to 150MBps. Because the serial cables used in SATA are thinner than the traditional cables used in

Parallel ATA(PATA), SATA systems have better airflow and can be installed in smaller chassis than Parallel ATA. In addition, the cables used in PATA can only extend to 40cm long, while Serial ATA cables can extend up to one meter. Overall, Serial ATA provides better functionality than Parallel ATA.

Introduction to Intel ICH5R SerialRAID

Located in the South Bridge of the E7210 Canterwood Chipset ,the I/O Controller Hub (ICH5R) provides the I/O subsystem with access to the rest of the system. It supports 2-channel Ultra ATA/100 Bus Master IDE controller (PATA) and two Serial ATA (SATA) Host Controllers, which support up to two Serial ATA ports and up to two RAID drives. The ICH5R supports the following Parallel ATA (PATA) and Serial (SATA) device configurations:

ATA Operation Modes

You can select from the following two modes: Legacy mode and Native mode.

Legacy Mode:

In this mode, system BIOS assigns the traditional 14 and 15 IRQs for the use of HDD. Up to 4 ATA devices are support by this mode.

Within Legacy Mode, the following three modes are supported:

*Non-Combined Mode: Parallel ATA only with the maximum of 4 devices supported;

*Non-Combined Mode: Serial ATA only with the maximum of 2 devices supported;

*Combined Mode: SATA devices and PATA with the support of 2 devices each (total: 4 devices maximum). (For IDE/SATA configurations, please refer to the table below.)

Primary Master (=PM)	Yes	Yes	No	No	No	No
Primary Slave (=PS)	Yes	No	Yes	No	No	No
Secondary Master(=SM)	Yes	No	No	Yes	No	No
Secondary Slave(=SS)	Yes	No	No	No	Yes	No
SATA Port0	No	SM	SM	PM	PM	PM
SATA Port1	No	SS	SS	PS	PS	SM
*Note: (No=Not Present, Yes=Present) Also, if Logical Primary is selected, the IDE channels are no longer available.						

Native Mode:

In this mode, system BIOS will automatically search all available IRQs for the use of HDD. For newer Operating Systems that support switching to Native Mode, such as Windows XP, Windows 2000, you can set SATA and PATA to Native Mode. These newer Operating Systems can accommodate both Legacy and Native modes and support up to 6 ATA devices. (*To select Legacy or Native Mode, please go to the "BIOS Setup" section in System BIOS).

Configuring BIOS settings for SATA RAID Functions (Native Mode)

1. Press the key during system bootup to enter the BIOS Setup Utility.

(*Note: If it is the first time powering on the system, we recommend you load Optimized Default Settings. If you have already done so, please skip to Step 3.

2. Use the arrow keys to select the "Exit" Settings . Once in the "Exit" settings, Scroll down to select the item- "Load Optimized Default settings" and press the <Enter> key. Select "OK" to confirm the selection. Press the <Enter> key to load the default settings for the BIOS.

3. Use the arrow keys to select the "Advanced" in the BIOS.

4. Scroll down to the item-"Advanced Chipset Control" and press the <Enter> Key to select this option.

5. Select the item- "On-Chip Serial ATA", and press the <Enter> Key. When the sub-menu appears, select the item-"Enhanced Mode".

6. Scroll up to the item- "SATA Mode", and press the <Enter> Key to select this option. When the sub-menu appears, select the item-"RAID".

7. Tap "Esc" and scroll down to "Exit". Select "Save and Exit" from the "Exit" menu. Press the <Enter> key to save the changes and exit the BIOS.

8. Once you've exited the BIOS Utility, the system will re-boot.

Using Intel ICH5R SATA RAID Utility Program

1. Creating, Deleting and Resetting RAID Volumes:

a. After the system exits from the BIOS Setup Utility, the system will automatically reboot. The following screen appears after Power-On Self Test.

```

Intel(R) RAID for Serial ATA - RAID BIOS v3.0.0.2307
Copyright (C) 2003 Intel Corporation. All Rights Reserved.

RAID Volumes:
None defined.

Non-RAID Disks:
Port Drive Model      Serial #      Size      Status      Bootable
0  ST3120023AS        3KA0J1ZJ    111.7GB   Normal      Yes
1  ST3120023AS        3KA0H0M0    111.7GB   Normal      Yes

Press <CTRL-I> to enter Configuration Utility...

```

b. When you see the above screen, press the <Ctrl> and the <i> keys simultaneously, the following screen of the main menu of the SATA RAID Utility will appear:

```

Intel(R) RAID for Serial ATA - RAID Configuration Utility
Copyright (C) 2003 Intel Corporation. All Rights Reserved. v3.0.0.2307
[ MAIN MENU ]
1. Create RAID Volume
2. Delete RAID Volume
3. Reset Disks to Non-RAID
4. Exit

[ DISK/VOLUME INFORMATION ]
RAID Volumes:
None defined.

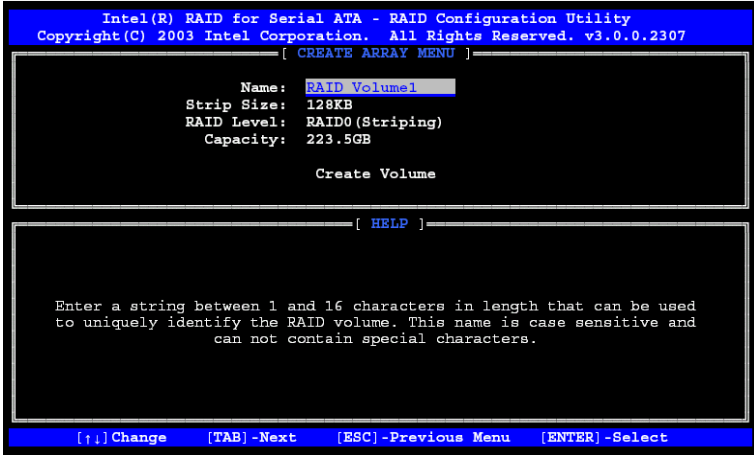
Non-RAID Disks:
Port Drive Model      Serial #      Size      Status      Bootable
0  ST3120023AS        3KA0J1ZJ    111.7GB   Normal      Yes
1  ST3120023AS        3KA0H0M0    111.7GB   Normal      Yes

[↑]-Select      [ESC]-Exit      [ENTER]-Select Menu

```

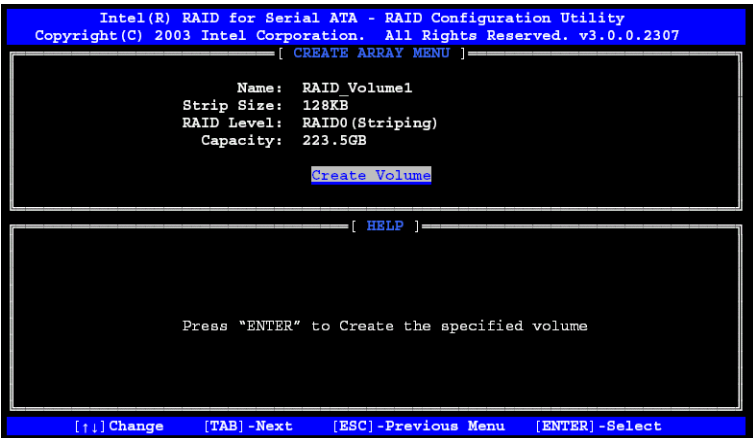
Creating RAID Volume:

a. Select Item #1- "Create RAID Volume" from the main menu and press the <Enter> key. The following screen will appear:

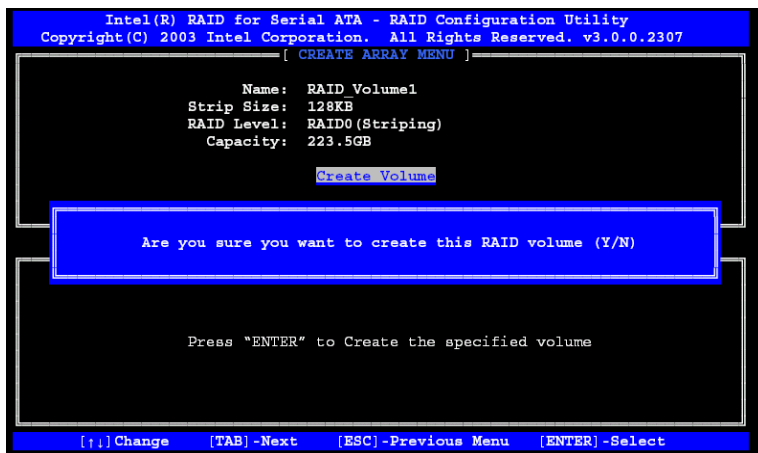


b. Specify a RAID Volume Name and press the <Tab> key or the <Enter> key to go to the next field. (*Note: You can use the <Esc> key to select the previous menu.)

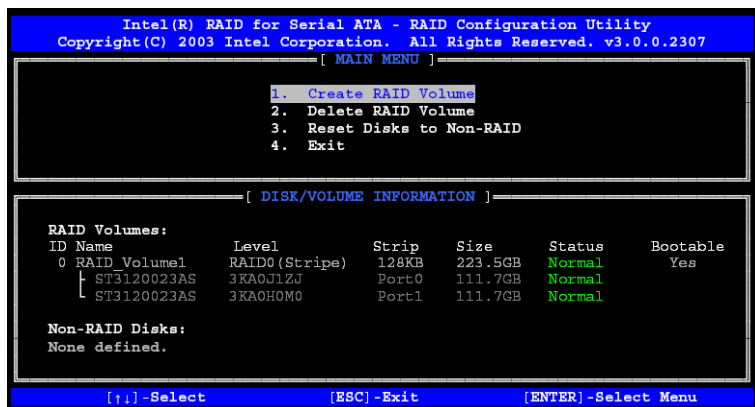
c. Use the <Tab>, <Upper Arrow>, <Down Arrow> and <Enter> keys to enter the appropriate values for the items selected and go to the next field.



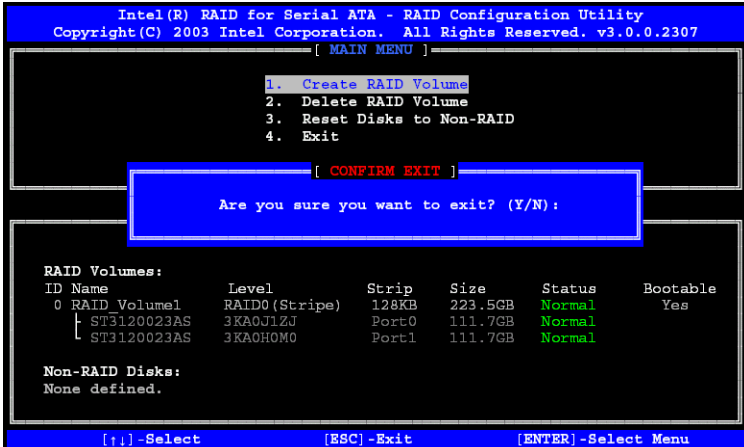
d. When asked "Are you sure you want to create this volume (Y/N), press "Y" to confirm the selection, or type "N" to change and to create the RAID volume. Then, press the <Enter> key to enter the value and return to the main menu.



e. You will return to the main menu with DISK/VOLUME INFORMATION updated as shown in the following screen.



f. Once the above screen appears, use the <Down Arrow> key to select item#4-"Exit" and press the <Enter> key. The following screen will appear:

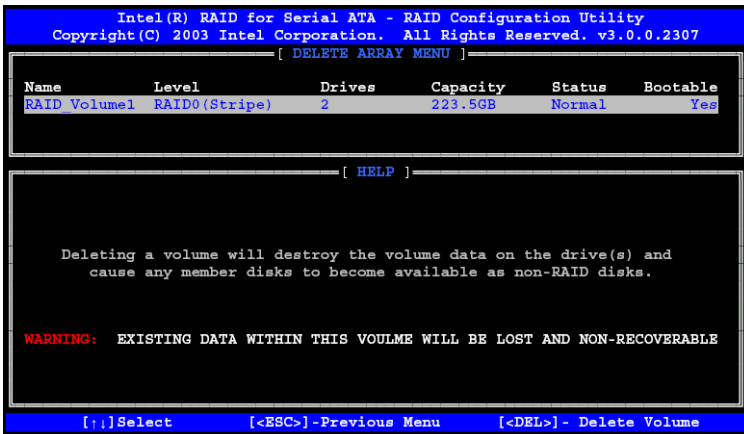


g. When asked "Are you sure you want to exit? (Y/N): ", type "Y" to confirm the selections and exit the "Create RAID Volume" menu. Press the <Enter> key to return to the main menu.

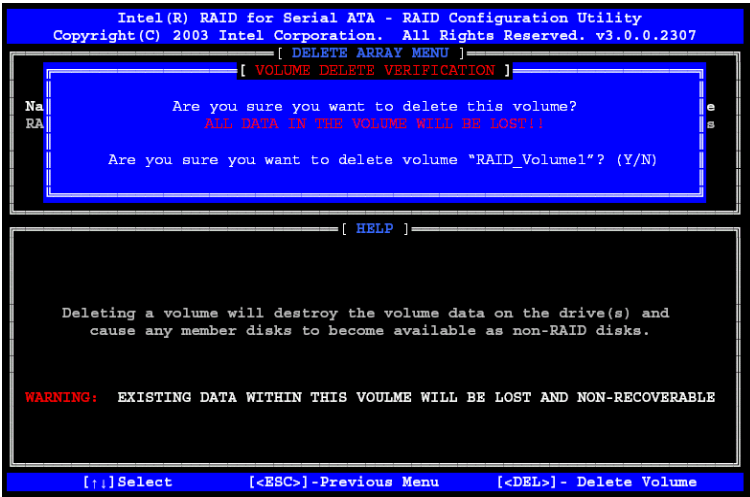
Deleting RAID Volume:

a. When you are in the main menu, use the <Down Arrow> and the <Upper Arrow> keys to select item#2-"Delete RAID Volume" in the main menu.

b. When the item# 2 is highlighted, press the <Enter> key to select the item: "Delete RAIDVolume". The following screen will appear:



c. Select the volume and press the <Delete> key to delete the RAID volume. The following screen will appear:

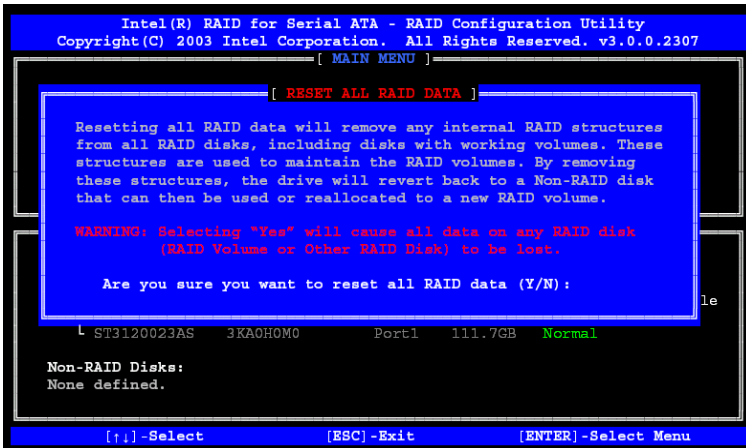


d. When asked "Are you sure you want to delete this volume?", type "Y" to confirm the deletion of the RAID Volume, and press the <Enter> key to return to the main menu. (*Note: the <Esc> key is used to select the previous menu.)

Reset Disks to Non-RAID:

a. When you are in the main menu, use the <Down Arrow> and the <Upper Arrow> keys to select item#3-"Reset Disks to Non-RAID" in the main menu.

b. When the item# 3 is highlighted, press the <Enter> key to select the item- "Reset Disks to Non-RAID". The following screen will appear:



c. When asked "Are you sure you want to reset all RAID data (Y/N):", type "Y" to confirm the selection, and press the <Enter> key to return to the main menu. (*Press the <Esc> key to select the previous menu.)

2. Exiting the ICH5R SATA RIAD Configuration Utility Program:

a. When you are in the main menu, use the <Down Arrow> and the <Upper Arrow> keys to select item#4-"Exit" in the main menu.

b. When the item# 4 "Exit" is highlighted, press the <Enter> key.

c. When asked "Are you sure you want to exit? (Y/N):" Type "Y" to confirm the selection, and press the <Enter> key to exit the ICH5R SATA RIAD Configuration Utility Program. The system will start to re-boot.

C-2 Installing the Windows XP/2000 for systems with RAID Functions

New Operating System-Windows XP/2000 Installation

a. Insert the Microsoft Windows XP/2000 Setup CD in the CD Driver, and the system will start booting up from CD.

b. Press the <F6> key when the message-" Press F6 if you need to install a third party SCSI or RAID driver" displays.

c. When the Windows XP/2000 Setup screen appears, press "S" to specify additional device(s).

d. Insert the driver diskette-"Intel AA RAID XP/2000 Driver for ICH5R into Drive A: and press the <Enter> key.

e. Choose the Intel(R)82801ER *SATA RAID Controller* from the list indicated in the XP/2000 Setup Screen, and press the <Enter> key.

f. Press the <Enter> key to continue the installation process. (If you need to specify any additional devices to be installed, do it at this time.) Once all devices are specified, press the <Enter> key to continue with the installation.

g. From the Windows XP/2000 Setup screen, press the <Enter> key. The XP/2000 Setup will automatically load all device files and then, continue the Windows XP/2000 installation.

(*Note: the current version of the ICH5R SATA RAID Utility can only support the Windows XP/2000 Operating System.)

- h. After Windows XP/2000 Installation is completed, the system will automatically reboot.
- i. Insert Supermicro CD that came with the package into the CD Drive during system reboot, and the following screen will appear:

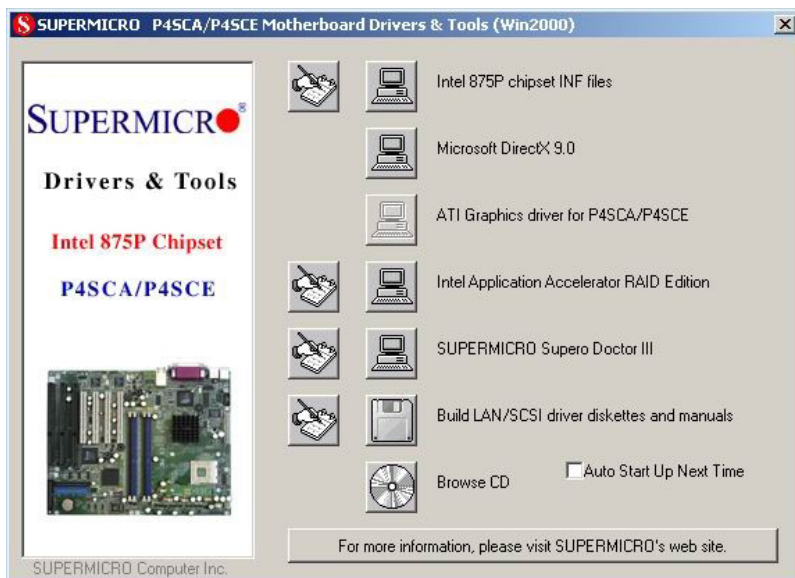
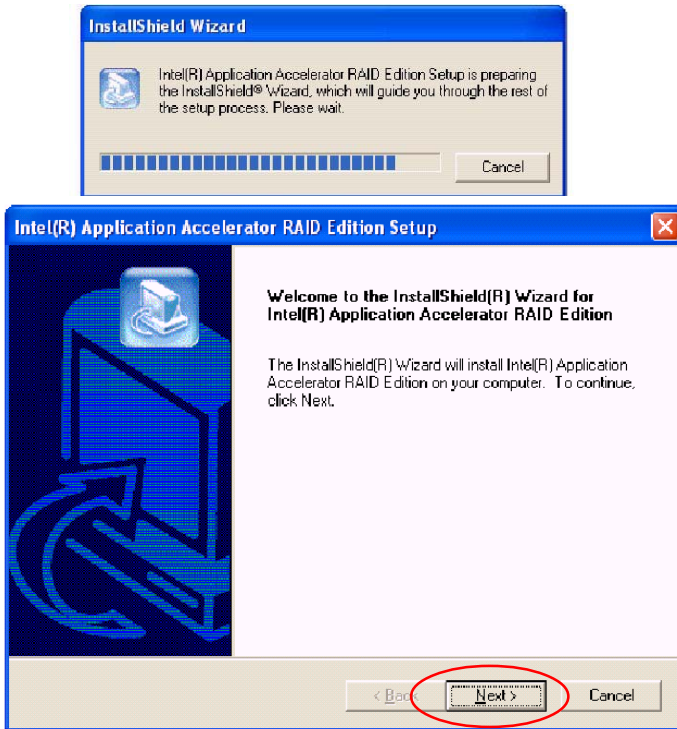


Figure 2-6. Driver/Tool Installation Display Screen

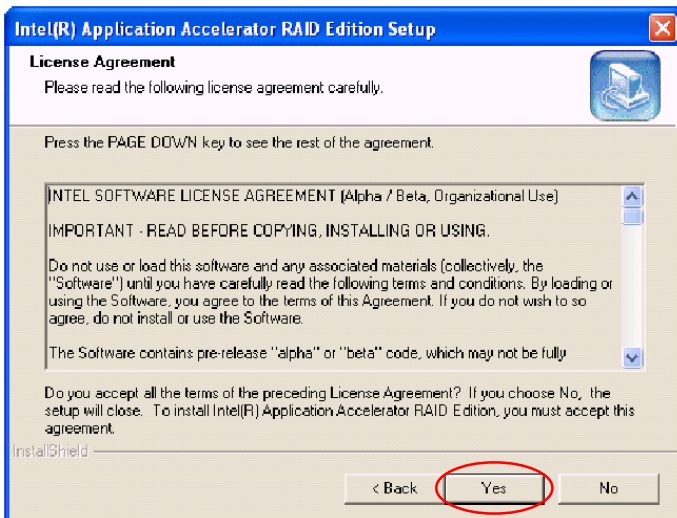
(*Note: Click the icons showing a hand writing on the paper to view the readme files for each item. Click the computer icons to the right of these items to install each item (from top to the bottom) one at a time. **After installing each item, you must re-boot the system before moving on to the next item on the list.** The bottom icon with a CD on it allows you to view the entire contents of the CD.)

Installing Intel Application Accelerator Utility

- a. When the above screen appears, click on the icon marked "Application Accelerator RAID Edition" on the screen, and the following screen will appear:

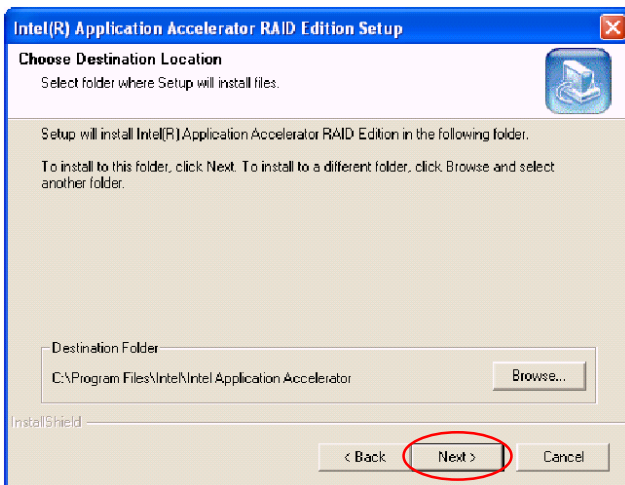


- b. When the above screen appears, click on the icon marked "Next" on the screen, and the following screen will appear:

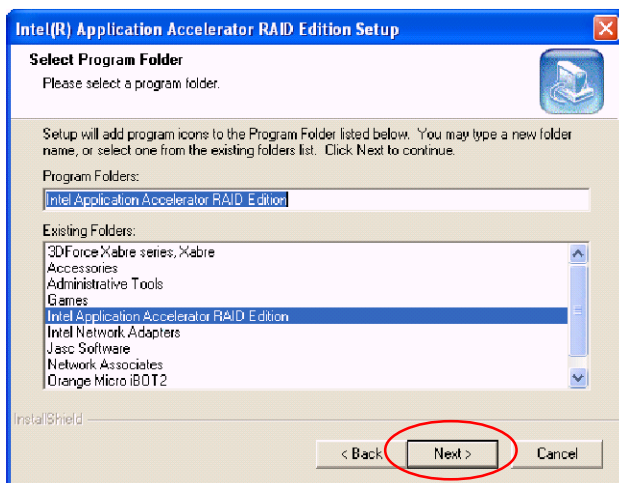


c. After reading the License Agreement, click on the icon marked "Yes" on the screen, and the following screen will appear:

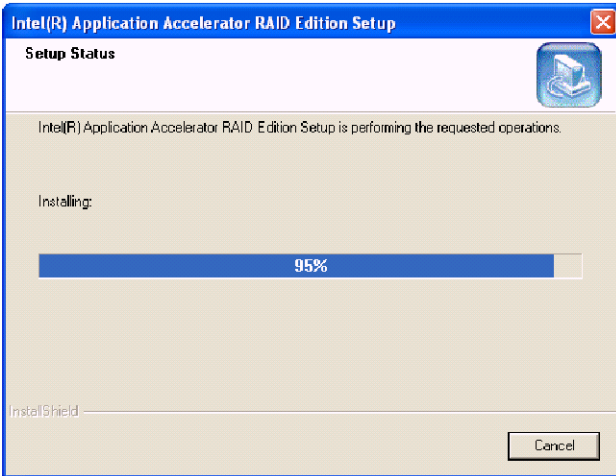
d. Specify the folder that you want the program to be installed in and then, click on the icon marked "Next" to begin the installation process.



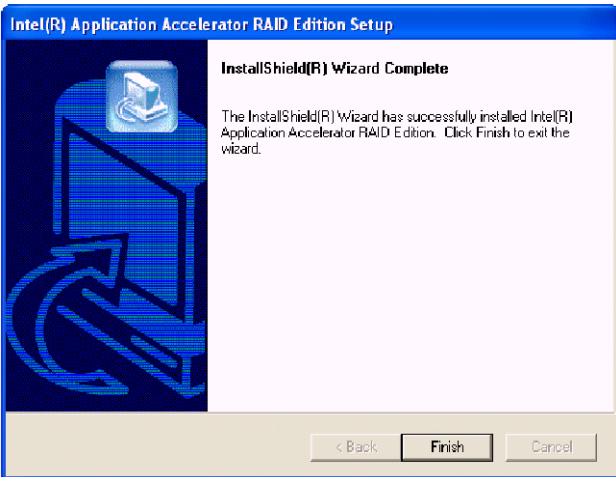
e. Specify a program folder where you want the Setup to add the program icon as shown in the following screen and click on the icon marked "Next".



f. The following screen will appear to display the status of the Intel Application Accelerator RAID Edition Installation.



g. Once the Application Accelerator RAID Edition installation is completed, the following screen will appear and the system will start to re-boot.



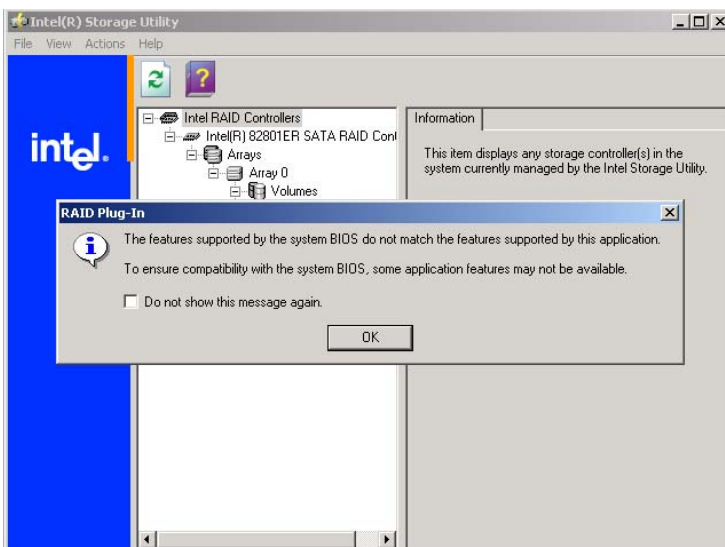
(*Note: Once the XP/2000 Operating System is installed, please read the "Readme text files" for the instructions to use the SATA RAID Utility in the Windows XP/2000 OS environment.)

C-3 Rebuilding SATA RAID 1

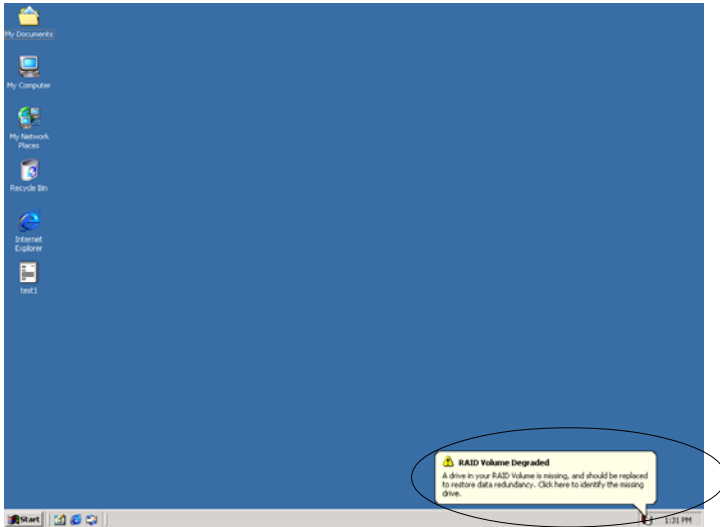
Procedures to Rebuild RAID

(*If necessary, please download documentation from Intel's website at: [Intel® Application Accelerator RAID Edition.](#))

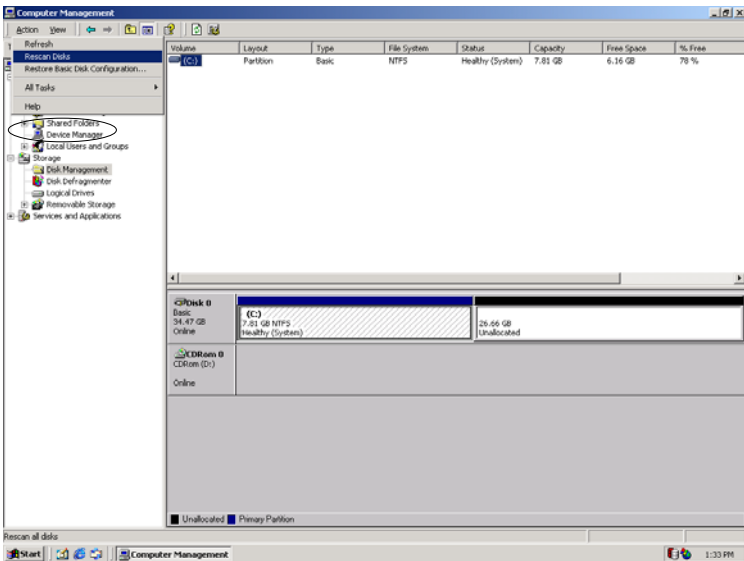
1. During system bootup, a pop-up message, as shown in the screen below, will appear. Since the utility was designed for all Intel RAID controllers, some of the features included in the utility may not be supported by the onboard ICH5R. Therefore, when you see the pop-up message indicated below, please click OK and hit <Enter> to continue.



2. Another pop-up message displays, alerting you that the RAID Volume has been degraded and the following screen will appear:

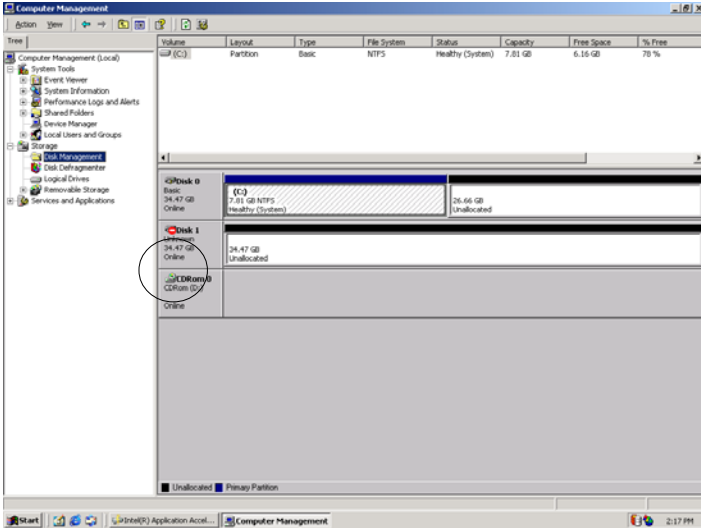


3. Then, you can double click the Intel AARE (SATA RAID Controller) menu, and it will show you what is missing or not working.
4. Unplug the bad HDD and replace it with a new one.
5. Reboot the system once, and then go to "Disk Management". The following screen will appear:

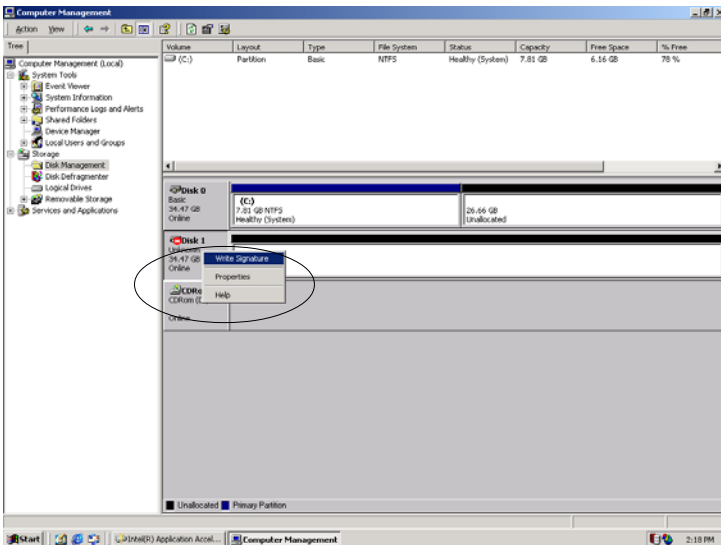


6. Then click "Action" to scan disks.

7. Once the disk manager detects the new disk that you've installed. It will show an "Unknown" disk as indicated in the following screen:

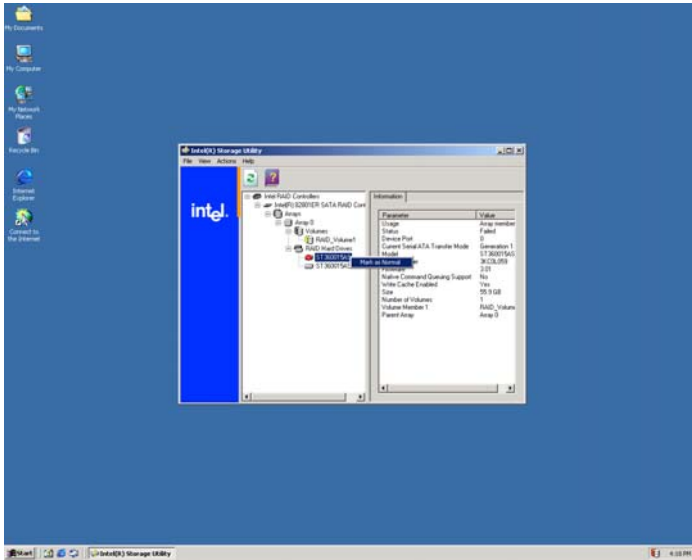


8. Once the above screen appears, right click on the new disk and It will bring up a manual for the new disk. Select the item-“Write Signature” to the new disk and the following screen will appear:



9. After you finished writing the signature to the new disk, Open the Intel AARE application again. (***Note: Do not reboot the system to avoid losing data!!**)

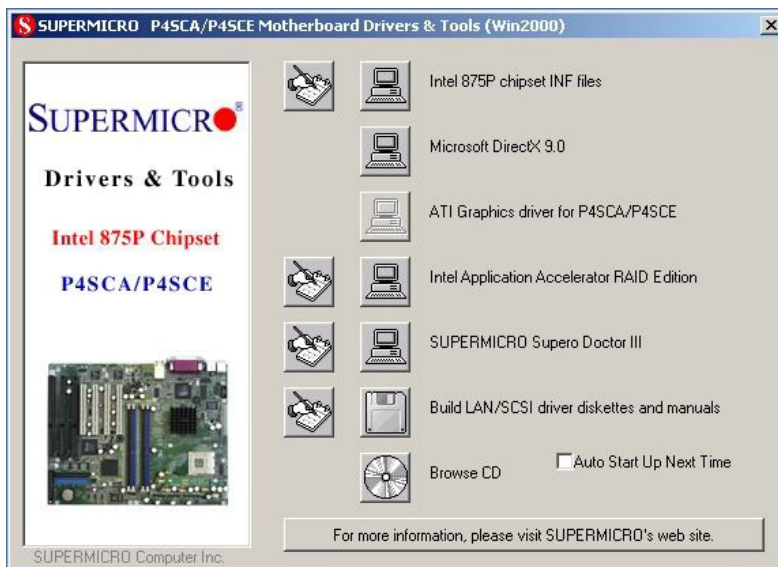
10. This time it should detect that you have a new disk available.
11. Right click on the new disk and select “Mark as Normal” and the following screen will appear:



12. Once you've made your selection, you can go up to the setting of “RAID Volume” to see the process of rebuilding RAID1 in progress.

C-4 Installing the Operating System and other Software Programs

After all the hardware has been installed, you must first install the operating system, and then, other software drivers. The necessary drivers are all included on the CDs that came packaged with your motherboard. (*Note: for the Windows 2003 OS, please refer to Page C-14.)



Driver/Tool Installation Display Screen

(*Note: Click the icons showing a hand writing on the paper to view the readme files for each item. Click the computer icons to the right of these items to install each item (from top to the bottom) one at a time. **After installing each item, you must re-boot the system before moving on to the next item on the list.** The bottom icon with a CD on it allows you to view the entire contents of the CD.)

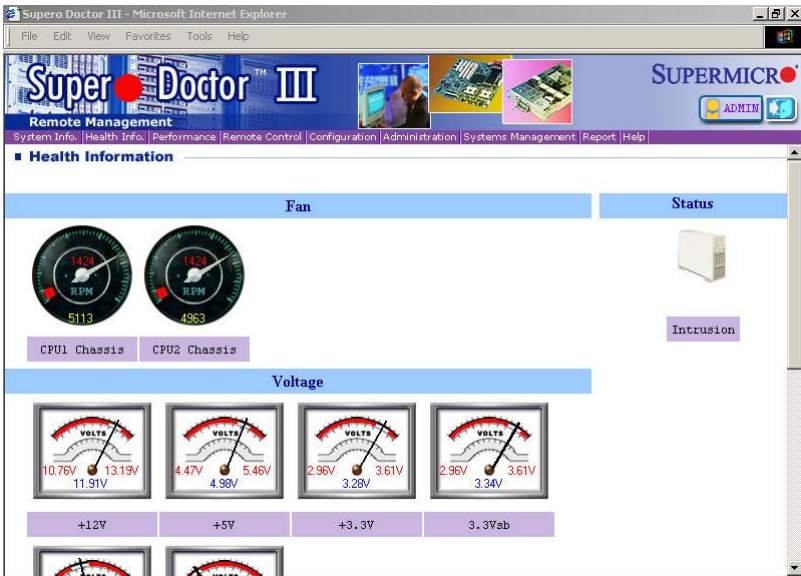
Supero Doctor III

The Supero Doctor III program is a web-base management tool that supports remote management capability. It includes Remote and Local Management tools. The local management is called the SD III Client. The Supero Doctor III program included on the CDROM that came with your motherboard allows you to monitor the environment and operations of your system. Supero Doctor III displays crucial system information such as CPU temperature, system voltages and fan status. See the Figure below for a display of the Supero Doctor III interface.

Note 1: The default password and User Name are ADMIN.

Note 2: In the Windows OS environment, the Supero Doctor III settings take precedence over the BIOS settings. When first installed, the SD III adopts the temperature threshold settings previously set in the BIOS. Any subsequent changes to these thresholds must be made within Supero Doctor, since the SDIII settings override the BIOS settings. For the Windows OS to adopt the BIOS temperature threshold settings, please change the SDIII settings to be the same as those set in the BIOS.

Supero Doctor III Interface Display Screen-I (Health Information)



Supero Doctor III Interface Display Screen-II (Remote Control)

Graceful power control

Supero Doctor III allows a user to inform the OS to re-boot or shut down within a specified time (the default is 30 seconds). Before the system reboots or shuts down, it's allowed to cancel the action.

Requirements

Keep Supero SD3Service Daemon running at all times on this system.
Provide TCP/IP connectivity.

Power control

*Note: SD III Software Revision 1.0 can be downloaded from our Website at: ftp://ftp.supermicro.com/utility/Supero_Doctor_III/. You can also download SDIII User's Guide at: <http://www.supermicro.com/PRODUCT/Manuals/SDIII/UserGuide.pdf>. For Linux, we will still recommend Supero Doctor II.