

Advanced All-in-One AP/PxP/CPE

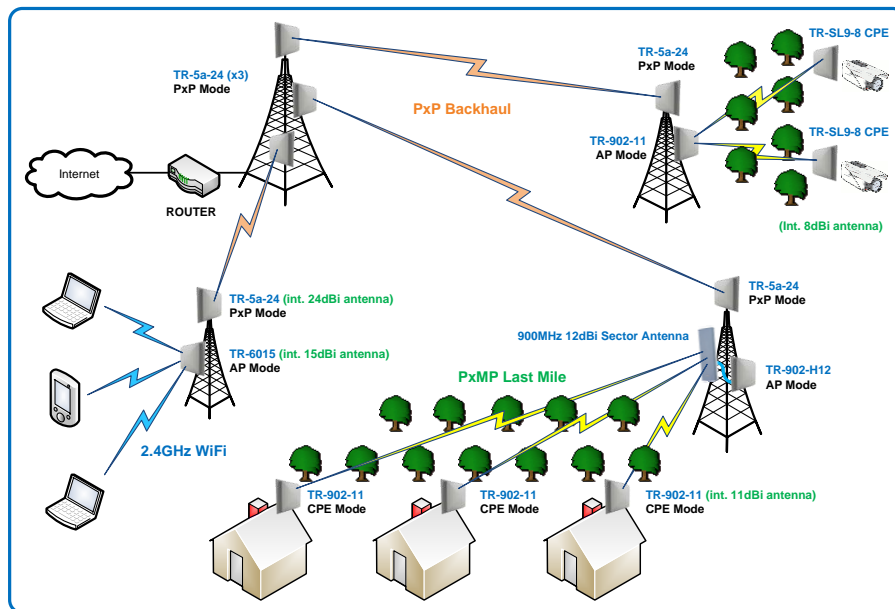
Tranzeo's TR-902 series of 900MHz Outdoor Tri-Mode units are intended for use in applications with Near-Line-of-Sight conditions (NLOS). These versatile and cost-effective units can be configured as Access Point (AP), Point-to-Point (PxP), or as Customer Premise Equipment (CPE). This product series features a high performance radio with a peak power of +29dBm, and advanced networking and management capabilities including NAT Routing, DHCP Server, Built-in StreamEngine™ QoS, WEP/WPA/WPA2 Security, and Bandwidth Throttling.

The ruggedized weatherproof all-in-one design meets IP67 and NEMA Type 4X environmental standards, requiring minimum installation and maintenance costs in conditions ranging from -60 oC to +60 oC. The **TR-902** is also backed by an industry-leading **5-Year Parts and 3-Year Part & Labour Warranty** and **Lifetime Technical Support** for worry-free network operation.

Tranzeo's leading edge engineering facilities combined with our state-of-the-art in-house manufacturing ensures highest quality products at very competitive prices. The **TR-902** family of products are RUS accepted with "Buy American" status, making it qualified for stimulus funding.

Applications

- Remote Data Acquisition
- Internet Service
- Video Transmission
- Security and Surveillance
- Private Networks
- WiFi Hot Spots



Key Features

- IEEE 802.11b/g Based
- AP/PxP/CPE Radio Modes
- Up to +29dBm Transmit Power with Adjustable Output
- 7W Solar Friendly Power Draw
- 5/10/20MHz Selectable Channels
- Bandwidth Throttling
- Built-in StreamEngine™ QoS
- WEP/WPA/WPA2 Security
- TCP/IP, UDP, TFTP, SNMP v2c
- NAT, PPPoE, VPN Pass-through
- Dual Ethernet Ports
- Power-over-Ethernet (POE)
- Daylight Visible Alignment LED's f
- Web-based Management Tools
- Remote Firmware Upgrade
- Weatherproof Enclosure
- All-in-One Units with Integrated Panel Antenna



About Tranzeo Wireless Technologies™

Tranzeo Wireless Technologies Inc. (TSX:TZT) leads the wireless broadband industry for value, by producing high-performance wireless network equipment with a low cost of ownership and unparalleled service allowing communities and businesses to communicate without boundaries. Since the company's inception in 2000, Tranzeo's optimum cost effectiveness, premium quality and responsive support have attracted a growing number of devoted dealers and distributors worldwide.

Tranzeo Wireless Technologies Inc.

19473 Fraser Way, Pitt Meadows, BC, Canada V3Y 2V4 • T: 604.460.6002 • F: 604.460.6005 • Toll Free: 1.866.872.6936 • www.tranzeo.com

Radio Interface					
Standards	IEEE 802.11b/g ⁽¹⁾				
Frequency Range	902 – 928 MHz				
Channel Bandwidths	5MHz, 10MHz, 20MHz				
Radio Modes	Access Point (AP), Point-to-Point (P×P), Customer Premise Equipment (CPE)				
Transmit Power	+29 dBm (peak), +25 dBm (mean) with Adjustable Output				
Receiver Sensitivity	b-mode	-83 dBm @ 11 Mbps, -86 dBm @ 5.5 Mbps, -89 dBm @ 2 Mbps, -92 dBm @ 1 Mbps			
	g-mode	-67 dBm @ 54 Mbps, -69 dBm @ 48 Mbps, -74 dBm @ 36 Mbps, -78 dBm @ 24 Mbps, -87 dBm @ 6 Mbps			
Data Rate & Modulation	b-mode	5.5/11 Mbps CCK, 2 Mbps DQPSK, 1 Mbps DBPSK			
	g-mode	48/54 Mbps QAM-64, 24/36 Mbps QAM-16, 12/18 Mbps QPSK, 6/9 Mbps BPSK			
Receive Signal Strength	Noise and Receive Signal Levels (dBm) and Daylight Alignment Visible LED's				
Antenna Polarization	Horizontal or Vertical				
Antenna Options and Model Information					
Model No. ⁽²⁾	Type	Wind Load (N)		Beamwidth	
		100 mph	125 mph	Horizontal	Vertical
TR-902-Nf/W	N-Female Connector	105	164	N/A	N/A
TR-902-8f/W	8 dBi Panel (internal)	105	164	60°	65°
TR-902-11f/W	11 dBi Panel (internal)	182	284	55°	60°
TR-902-V13f/W	13 dBi Vertical Sector (external)	466	727	16°	120°
TR-902-H12f/W	12 dBi Vertical Sector (external)	396	619	120°	20°
Networking and Management					
Device Management	Cross-Platform Utility, Web-Based Management, Remote Configuration and Firmware Upgrades (via IP), TFTP, SNMP v2c (MIB-II, 802.11 MIB, Tranzeo MIB), Import/Export/Save Settings Profiles				
Protocols	TCP/IP, UDP, NAT, DHCP Client/Server, PPPoE, WDS, VPN Pass-Through, Multiple MAC Bridging				
Quality of Service (QoS)	StreamEngine™ QoS				
Bandwidth Management	Bandwidth Throttling (Bridge and Router Modes)				
Security	40/64-bit and 128-bit WEP Encryption, WPA/WPA2 (TKIP/AES/Enterprise), MAC address filtering				
Ethernet	2 x 10/100Base-T (Water-Tight RJ-45)				
Max DHCP Clients	255				
Power Supply					
Power Requirement	7 Watts (max)				
Power Supply	Power over Ethernet (PoE)				
DC Adapter	18VDC/1.1A (INPUT: 120-240VAC~ 50-60Hz, 0.6A) f-Model: Fixed UL Plug (US only) W-Model: Snap-In Plugs for US, UK, and EU included				
Mechanical and Environmental					
	TR-902-N/TR-902-8/TR-902-V13/TR-902-H12		TR-902-11		
Radio Dimensions	13.22" x 10.28" x 3.50" (336mm x 261mm x 89mm)		16.18" X 14.43" X 3.50" (411mm x 367mm x 89mm)		
Radio Weight	2.4 lbs (1.1 Kg)		4.5 lbs (2 Kg)		
Installation Hardware	PoE Injector with Built-in Surge Protection, DC Adapter, Ethernet Boot Cover with Weatherproof Gasket, L-Bracket with KEP Nuts and U-Bolt for Pole Mount				
Environmental Rating	IP67 and NEMA Type 4X				
Operating Temperature	-65°C to +60°C				
Storage Temperature	-40°C to +85°C				
Compliance and Warranty					
Export Control	HTC 8517.69.0000, ECCN 5A002 ENC, ECL 1-5.A.2.A.1				
Compliance & Approvals	RoHS, FCC Part 15 Class B, Industry Canada				
Warranty	5-Year Parts / 3-Year Parts and Labour ⁽³⁾				

⁽¹⁾ g-mode available only in products built after January 10, 2007 ⁽²⁾ f: FCC Model (for use in the USA only), W: World Model (subject to local regulatory requirements) ⁽³⁾ 1-Year Parts and Labour warranty for products built before December 1, 2006, and 3-Year Parts and Labour warranty for products built after December 1, 2006 and before December 31, 2007. Specifications are subject to change without notice. StreamEngine is a trademark of Ubicom. Tranzeo and the Tranzeo logo are registered trademarks of Tranzeo Wireless Technologies Inc.